



COLVILLE TERRACE, W11
£895,000 LEASEHOLD

AN OUTSTANDING RAISED GROUND FLOOR, ONE
BEDROOM APARTMENT, COMPLETELY REFURBISHED
BY PEMBRIDGE DEVELOPMENTS.

Notting Hill Sales | 0207 727 3227 | nottinghill@winkworth.co.uk 178
Westbourne Grove, London, W11 2RH

Winkworth

for every step...

winkworth.co.uk



SUMMARY:

An outstanding raised ground floor, one bedroom apartment, completely refurbished by Pembridge Developments. Extending to 543 sq.ft feet, this luxurious apartment comprises; entrance hall, open plan reception/dining/kitchen, bathroom and bedroom to the rear. Finished to the highest standards there is parquet wooden flooring throughout combined with fantastic period features, a large bay window and excellent ceiling heights throughout.

Utilities:

Electricity – Mains

Water – Mains

Sewerage – Mains

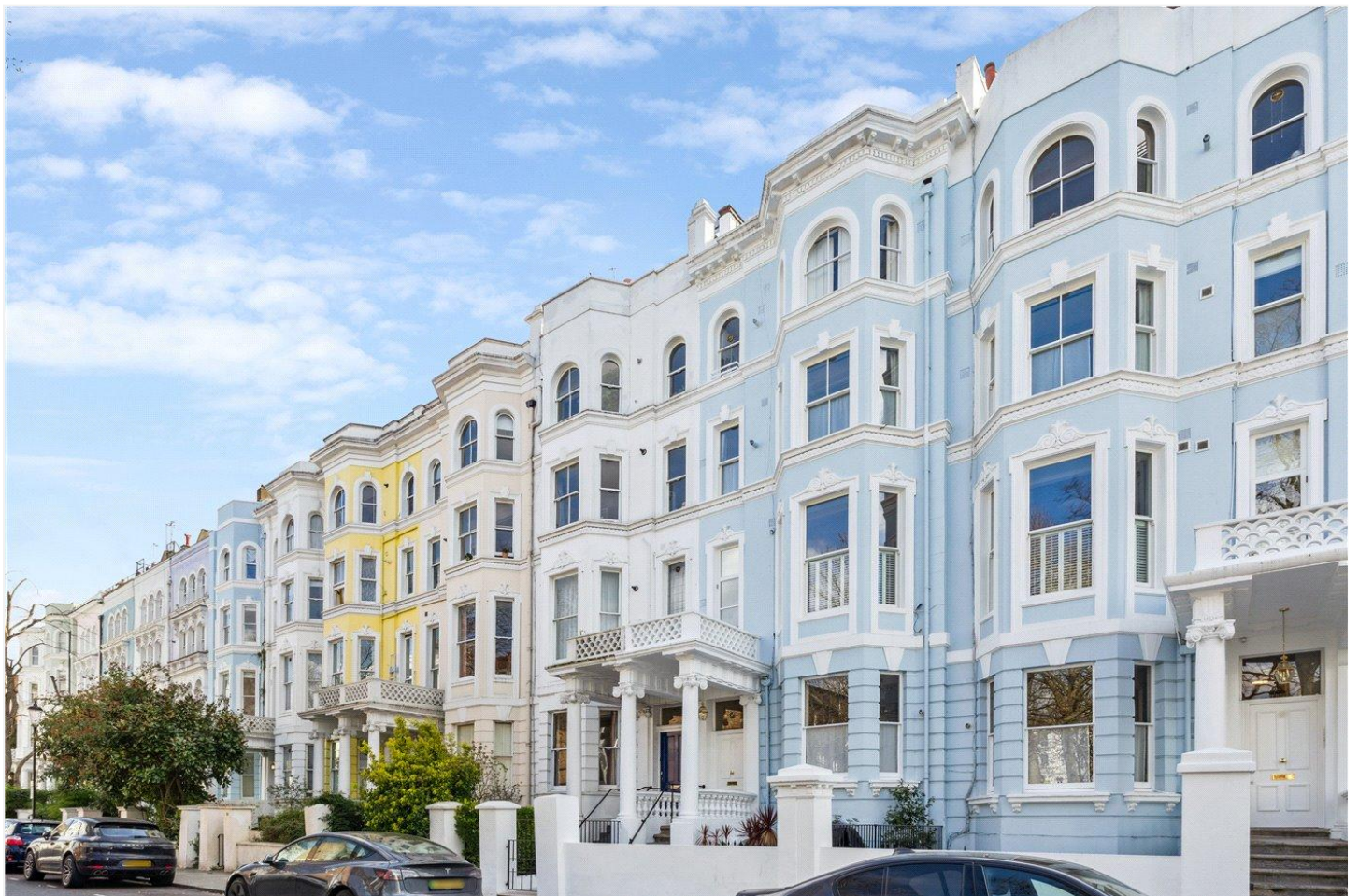
Heating – Gas

Broadband <https://checker.ofcom.org.uk/en-gb/broadband-coverage>

Mobile Coverage <https://checker.ofcom.org.uk/en-gb/mobile-coverage>

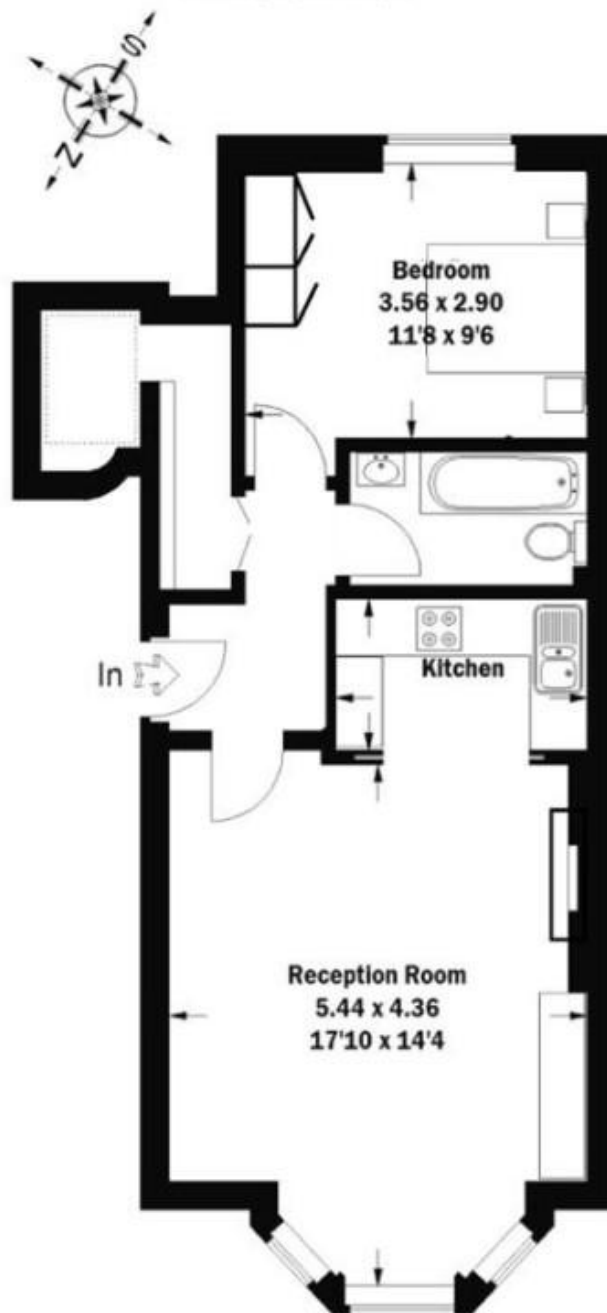
LOCATION:

Colville Terrace is a popular residential street running from Portobello Road to Ledbury Road, and the property is ideally located just to the east of Portobello Road, a moment's walk from its many boutiques, bars and restaurants. It is within easy walking distance of the many transport connections of Notting Hill Gate.



Colville Terrace, W11

Approximate Gross Internal Area
50.5 sq m / 543 sq ft



This floorplan is for illustration purposes only and is not to scale. The position and size of doors, windows, appliances and other features are approximate.

Score	Energy rating	Current	Potential
92+	A		
81-91	B		
69-80	C		
55-68	D	70 C	75 C
39-54	E		
21-38	F		
1-20	G		



Tenure: Leasehold

Term: 998 year and 7 months

Service Charge: £1,250 per annum

Council Tax Band: D (RBKC)

Where no figures are shown, we have been unable to ascertain the information. All figures that are shown were correct at the time of printing.

Notting Hill Sales | 0207 727 3227 | nottinghill@winkworth.co.uk
178 Westbourne Grove, London, W11 2RH

Winkworth

for every step...

winkworth.co.uk

Winkworth wishes to inform prospective buyers and tenants that these particulars are a guide and act as information only. All our details are given in good faith and believed to be correct at the time of printing but they don't form part of an offer or contract. No Winkworth employee has authority to make or give any representation or warranty in relation to this property. All fixtures and fittings, whether fitted or not are deemed removable by the vendor unless stated otherwise and room sizes are measured between internal wall surfaces, including furnishings.