



Winkworth

Regents Park Road, London, N3

£600,000 *Leasehold*



A two bedroom, sixth floor flat, (lift in block), set in this modern block, consisting of one, two and three bedroom apartments. The apartment is designed and specified to provide open-plan living space, with emphasis on style, modernity, and the optimal use of space and light. Gateway House is an outstanding development located in the heart of Finchley Central, within 161 metres from Finchley Central Underground station, as well as the many fashionable shops, cafes, restaurants and recreational parkland, such as Stephens House & Gardens.

KEY FEATURES

- Modern Development
- Sixth floor
- Open plan living
- Modern fitted kitchen & bathroom
- Two double bedrooms
- Allocated parking space.



Winkworth



Finchley

020 8349 3388 | finchley@winkworth.co.uk

Winkworth

for every step...



This wonderful property comprises of circa 750 sq.ft of living space and comprises open plan living/dining/fitted kitchen, two double bedrooms, fitted bathroom, utility cupboard, access to a private balcony and ample storage throughout.

Further benefits include lift-in-block and an allocated parking space.

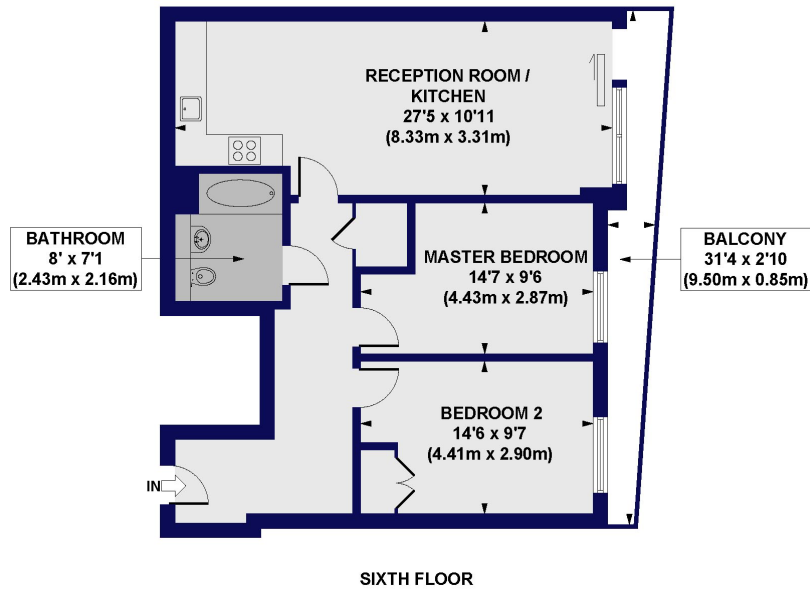




MATERIAL INFO

Tenure: Leasehold
Council Tax Band: E
EPC rating: B

Regents Park Road, N3
Approx. Gross Internal Floor Area 766 sq. ft / 71.18 sq. m

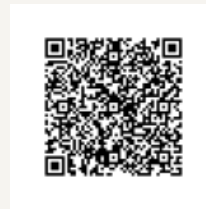


All measurements of walls, doors, windows, fittings and appliances, including their size and location, are shown as standard sizes and do not constitute any warranty or representation by the seller, their agent or CP Creative. Any intending purchaser must satisfy himself by inspection or otherwise as to the correctness of the information contained in these plans. This plan is for illustrative purposes only and should be used as such by any prospective purchasers.

Winkworth

Score	Energy rating	Current	Potential
92+	A		
81-91	B	85 B	85 B
69-80	C		
55-68	D		
39-54	E		
21-38	F		
1-20	G		

For more information, scan the QR code or visit the link below



<https://www.winkworth.co.uk/sale/property/FIN250341>

Where no figures are shown, we have been unable to ascertain the information. All figures that are shown were correct at the time of printing.

Finchley

020 8349 3388 | finchley@winkworth.co.uk

Winkworth

for every step...

Winkworth wishes to inform prospective buyers and tenants that these particulars are a guide and act as information only. All our details are given in good faith and believed to be correct at the time of printing but they don't form part of an offer or contract. No Winkworth employee has authority to make or give any representation or warranty in relation to this property. All fixtures and fittings, whether fitted or not are deemed removable by the vendor unless stated otherwise and room sizes are measured between internal wall surfaces, including furnishings.