



MOORHOUSE ROAD, HARROW, MIDDLESEX, HA3  
**£600,000 FREEHOLD**

Kingsbury | 020 8204 0000 | [kingsbury@winkworth.co.uk](mailto:kingsbury@winkworth.co.uk)

**Winkworth**

for every step...

[winkworth.co.uk](http://winkworth.co.uk)





**DESCRIPTION:** This four-bedroom semi-detached home presents an exciting opportunity for buyers seeking a property full of potential, offered to the market with no upper chain. The ground floor features a welcoming lounge, bedroom, fitted kitchen, utility room and guest W/C. Upstairs, you'll find three bedrooms and a family bathroom. Having already undergone a side extension in years, the home offers further scope to extend to the rear and into the loft (STPP). Externally, the property boasts off-street parking for two vehicles on the driveway and a substantial rear garden extending to approximately 100ft. The home is within easy reach of a wide range of local amenities, highly regarded schools and transport links. In need of modernisation, this property is a superb canvas for buyers to create their dream home.



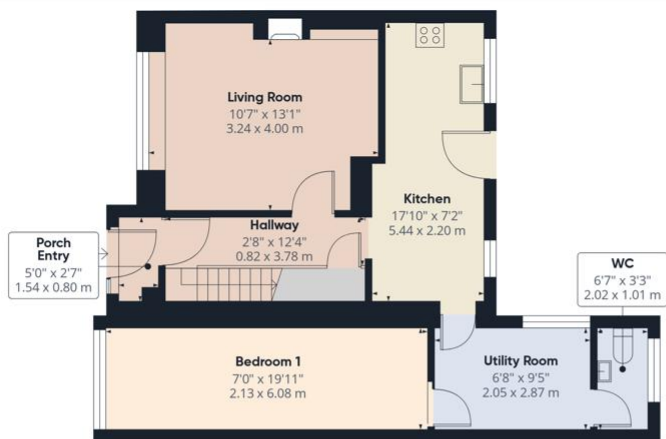
**Winkworth**

for every step...

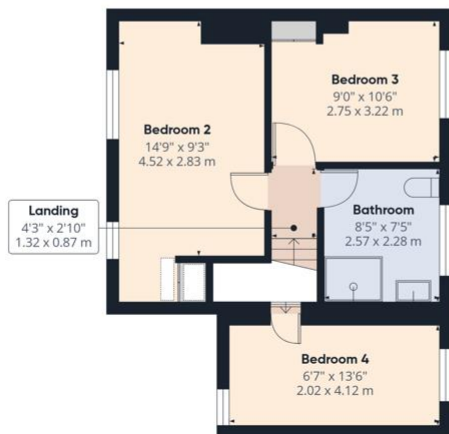




**Winkworth**  
for every step...



Ground Floor



Floor 1

Approximate total area<sup>ni</sup>  
997 ft<sup>2</sup>  
92.7 m<sup>2</sup>

(1) Excluding balconies and terraces

Calculations reference the RICS IPMS 3C standard. Measurements are approximate and not to scale. This floor plan is intended for illustration only.

GIRAFFE360

This floorplan is for illustration purposes only and is not to scale. The position and size of doors, windows, appliances and other features are approximate.

Score	Energy rating	Current	Potential
92+	A		
81-91	B		
69-80	C		
55-68	D		
39-54	E		
21-38	F		
1-20	G		

Tenure: Freehold

Council Tax Band: D - Harrow

All figures that are shown were correct at the time of printing.

Kingsbury | 020 8204 0000 | kingsbury@winkworth.co.uk

Winkworth

for every step...

winkworth.co.uk

Winkworth wishes to inform prospective buyers and tenants that these particulars are a guide and act as information only. All our details are given in good faith and believed to be correct at the time of printing but they don't form part of an offer or contract. No Winkworth employee has authority to make or give any representation or warranty in relation to this property. All fixtures and fittings, whether fitted or not are deemed removable by the vendor unless stated otherwise and room sizes are measured between internal wall surfaces, including furnishings.