



## GLENLOCH ROAD, NW3 £785,000 SHARE OF FREEHOLD

A fantastic, two double bedroom top floor (second floor) apartment set right in the heart of Belsize Park.

The property has two double bedrooms with built in storage, three-piece bathroom and a fully equipped separate kitchen and further benefits from a share of the freehold.

Glenloch Road is situated less than 100 yards from Belsize Park station (Northern Line) as well as the shops, bars and restaurants of Haverstock Hill.

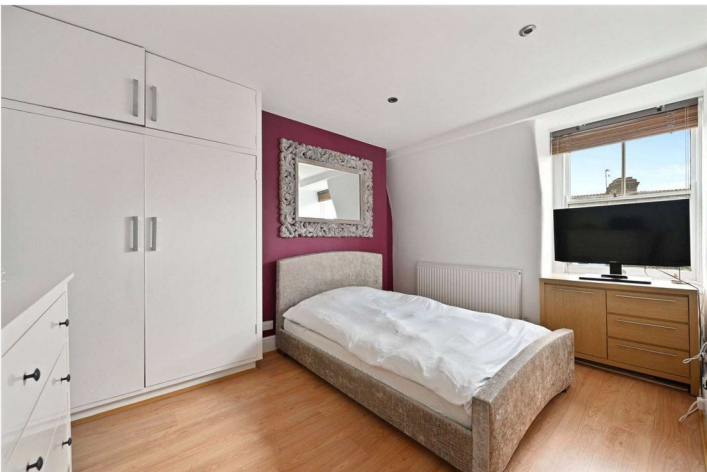
Two Double Bedrooms | Bathroom | Reception | Kitchen

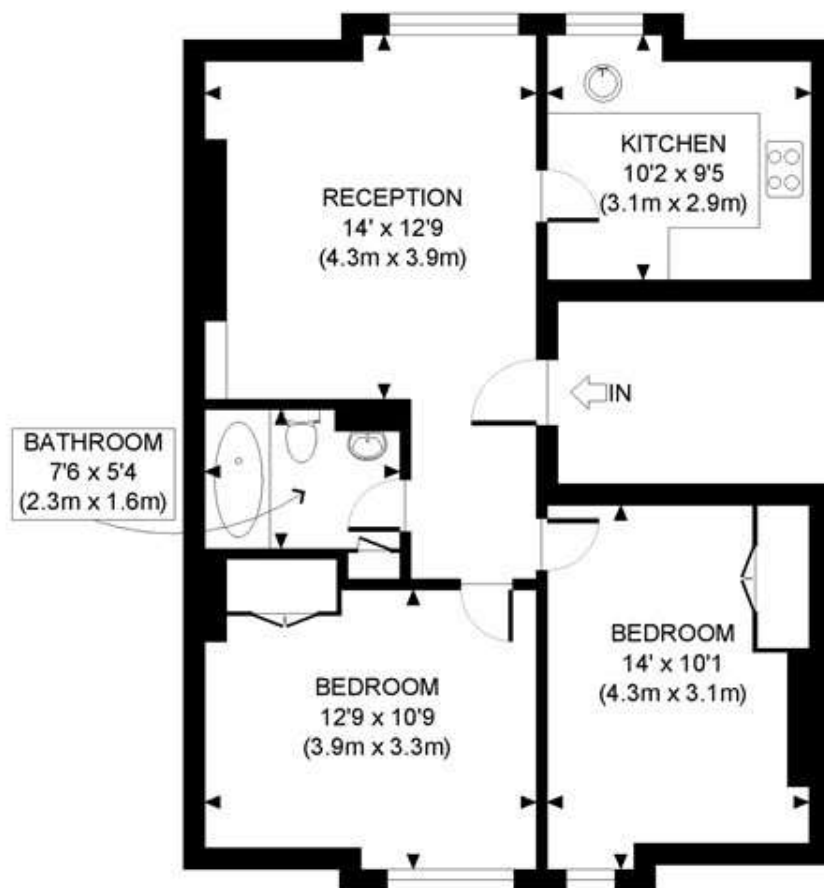
**Winkworth**

for every step...

[winkworth.co.uk/west-hampstead](http://winkworth.co.uk/west-hampstead)







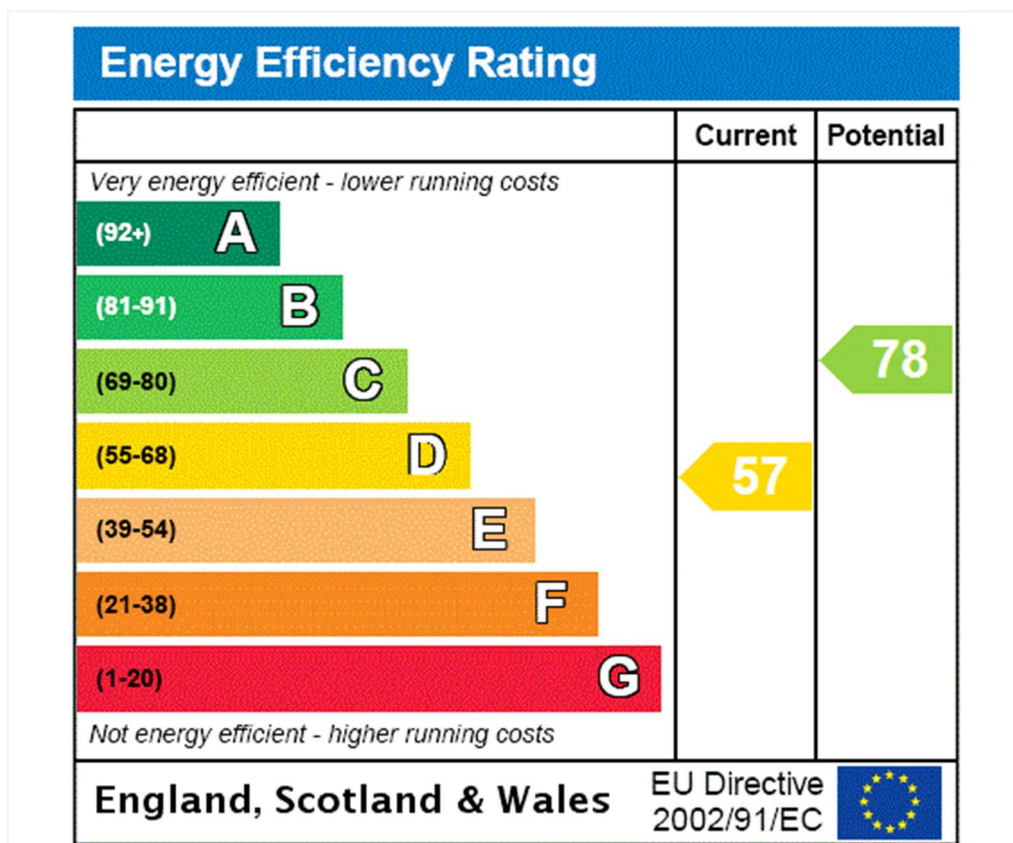
SECOND FLOOR  
GROSS INTERNAL  
FLOOR AREA 632 SQ FT

APPROX. GROSS INTERNAL FLOOR AREA: 632 SQ FT/ 59 SQM

**PROPERTY PHOTO PLANS**.CO.UK  
ONE STOP SHOP FOR PROPERTY MARKETING

This plan is for illustrative purposes only and should be used as such by any prospective client. Whilst every attempt has been made to ensure the accuracy of the Floor Plan contained here, measurements of the doors, windows, rooms and any other items are approximate and no responsibility is taken for any errors, omissions, or misstatement. The services, systems and appliances shown have not been tested and no guarantee as to the operability or efficiency can be given.





**Tenure:** Share of Freehold

**Term:** Expires - 01/01/2264

**Service Charge:** £1,500 per annum

**Council Tax Band:** E

Where no figures are shown, we have been unable to ascertain the information. All figures that are shown were correct at the time of printing.

Where no figures are shown, we have been unable to ascertain the information. All figures that are shown were correct at the time of printing. These particulars are not an offer or contract, nor part of one. You should not rely on statements by Winkworth in the particulars or by word of mouth or in writing "information" as being factually accurate about the property, its condition or its value. Winkworth does not have any authority to make any representations about the property, and accordingly any information given is entirely without responsibility on the part of the agents, seller(s) or lessor(s). These particulars are prepared on the basis of the information supplied by our client and are a rough guide for information only. The photographs show only certain parts of the property. We are not able to check all of the information and therefore are unable to guarantee accuracy. All interested parties are therefore advised to undertake all necessary inspections and checks that they deem appropriate. Where displayed, the square footage is taken from the floor plans, which are created by an independent supplier. These measurements are approximate and included for illustrative purposes only. The measurements may vary. Winkworth does not make any representation as to the accuracy of these measurements and you should seek to verify them for yourself. Winkworth accept no liability for any loss you may suffer if you rely on these measurements. All fixtures and fittings, whether fitted or not are deemed removable by the vendor unless stated. Any reference to alterations to, or use of, any part of the property does not mean that any necessary planning, building regulations or other consent has been obtained. Amenities and appliances have not been tested

**West Hampstead** | 142 West End Lane, London, NW6 1SD | 020 7483 7602 | [westhampstead@winkworth.co.uk](mailto:westhampstead@winkworth.co.uk)

**Winkworth**

for every step...

[winkworth.co.uk/west-hampstead](http://winkworth.co.uk/west-hampstead)

Winkworth wishes to inform prospective buyers and tenants that these particulars are a guide and act as information only. All our details are given in good faith and believed to be correct at the time of printing but they don't form part of an offer or contract. No Winkworth employee has authority to make or give any representation or warranty in relation to this property. All fixtures and fittings, whether fitted or not are deemed removable by the vendor unless stated otherwise and room sizes are measured between internal wall surfaces, including furnishings.