



KILRAVOCK STREET, W10  
**£2,600 PER MONTH UNFURNISHED**

**GORGEOUS TWO BEDROOM COTTAGE, IDEALLY  
LOCATED IN THE EVERY TRENDY QUEENS PARK  
AVENUES.**

Kensal Rise & Queens Park | 0208 960 4947 | [kensalrise@winkworth.co.uk](mailto:kensalrise@winkworth.co.uk)

**Winkworth**

for every step...

[winkworth.co.uk](http://winkworth.co.uk)





### **DESCRIPTION:**

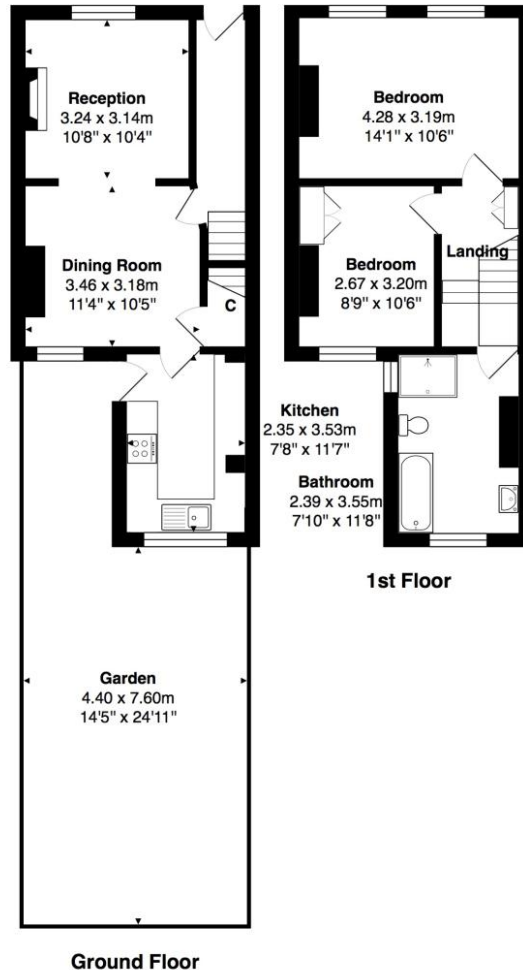
Comprising a south facing reception room with original feature fireplace wooden flooring throughout, leading onto a dining area just before the rear newly fitted kitchen which leads on to a private terrace garden with outside storage. Upstairs two double bedrooms and modern family bathroom fitted with walk in shower and bathtub. This property has an abundance of character and charm, viewings are highly recommended.

MANAGED BY WINKWORTH

Westminster Council Tax

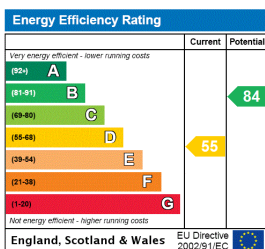






**Total Area: 75.0 m<sup>2</sup> ... 807 ft<sup>2</sup> (excluding garden)**  
All measurements are approximate and for display purposes only

This floorplan is for illustration purposes only and is not to scale. The position and size of doors, windows, appliances and other features are approximate.



**Deposit:** 5 weeks rent

**Holding Deposit:** 1 weeks rent

**Council Tax Band:** C

Where no figures are shown, we have been unable to ascertain the information. All figures that are shown were correct at the time of printing.

**Winkworth**

Kensal Rise & Queens Park | 0208 960 4947 | kensalrise@winkworth.co.uk

for every step...

[winkworth.co.uk](http://winkworth.co.uk)

Winkworth wishes to inform prospective buyers and tenants that these particulars are a guide and act as information only. All our details are given in good faith and believed to be correct at the time of printing but they don't form part of an offer or contract. No Winkworth employee has authority to make or give any representation or warranty in relation to this property. All fixtures and fittings, whether fitted or not are deemed removable by the vendor unless stated otherwise and room sizes are measured between internal wall surfaces, including furnishings.