



Mathias Walk Brighton Hill Basingstoke Hampshire RG22 4BZ

Description

A pleasantly presented three-bedroom semi detached house with gas fired central heating, Mathias Walk is conveniently located within walking distance to local schools and amenities.

The entrance porch opens out into a good size living room which has laminate flooring and stairs to the first floor.

The modern kitchen and dining area are both positioned at the rear of the property and lead out into the enclosed garden, perfect set up for when the summer comes along, and BBQ season begins.

Upstairs there are two double bedrooms and one single bedroom plus a family bathroom.

Outside the front there is a block paved parking space plus the driveway which runs along the side of the house.

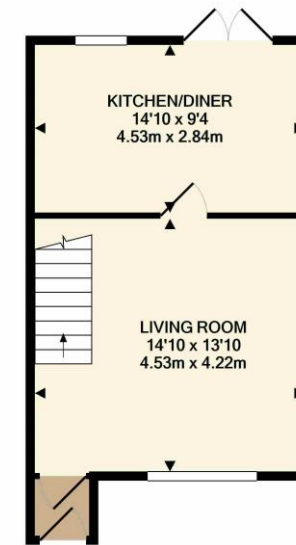
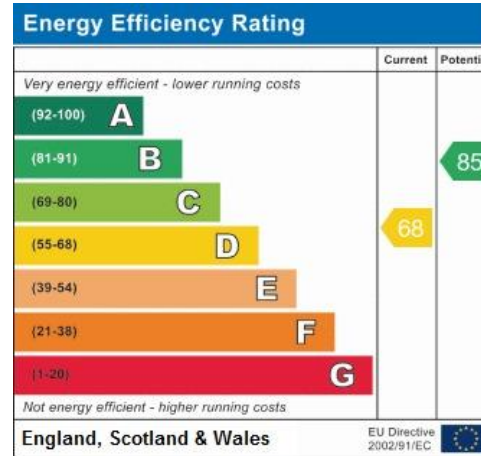


Winkworth

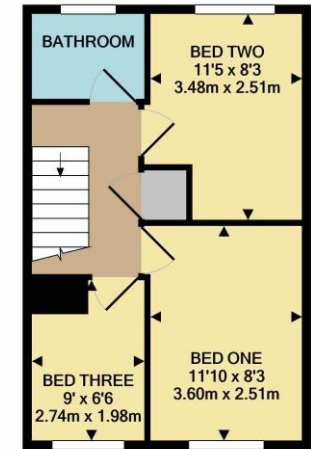
Accommodation

- Semi detached house
- Three bedrooms
- Living room
- Kitchen/diner
- Bathroom
- Garden
- Driveway

All details are given in good faith and are believed to be correct at time of printing. Winkworth give no representation as to their accuracy and potential purchasers or tenants must satisfy themselves by inspection or otherwise as to their correctness. No employee of Winkworth has authority to make or give any representation or warranty in relation to this property.



GROUND FLOOR
APPROX. FLOOR
AREA 356 SQ.FT.
(33.1 SQ.M.)



1ST FLOOR
APPROX. FLOOR
AREA 338 SQ.FT.
(31.4 SQ.M.)

TOTAL APPROX. FLOOR AREA 694 SQ.FT. (64.5 SQ.M.)

Whilst every attempt has been made to ensure the accuracy of the floor plan contained here, measurements of doors, windows, rooms and any other items are approximate and no responsibility is taken for any error, omission, or mis-statement. This plan is for illustrative purposes only and should be used as such by any prospective purchaser. The services, systems and appliances shown have not been tested and no guarantee as to their operability or efficiency can be given.
Made with Metropix ©2021



Basingstoke Office

10B Church Street, Basingstoke, Hampshire, RG21 7QE

01256 811730 | basingstoke@winkworth.co.uk

winkworth.co.uk/Basingstoke

Winkworth

See things differently.