



Springvale Avenue, Kings Worthy, Winchester, Hampshire, SO23 7LH

Winkworth



Springvale Avenue, Kings Worthy, Winchester, Hampshire, SO23 7LH

A Light-Filled Family Home with Generous Gardens

This handsome and spacious detached house, originally built in 1984, offers well-balanced accommodation across two floors. Filled with natural light throughout, the property features generous gardens, is privately positioned off a no-through road and is offered with no forward chain.



The large and welcoming entrance hall includes a cloakroom/WC and a well-appointed study, with stairs rising to the first floor. From the hall, you enter a generous sitting room that runs the full depth of the house, featuring a central fireplace and double doors opening to the garden. Additional double doors lead into the dining room, which is located at the rear of the property. Adjacent to the dining room is the fitted kitchen, well-sized with ample wooden cabinetry and integrated oven, grill, and hob. While it may benefit from some updating, the kitchen presents the possibility of being combined with the dining room to create a larger, open-plan space. A useful utility room with an adjoining storeroom leads through to the rear of the substantial integral double garage.

Upstairs, the bedrooms are arranged around a central landing. The principal bedroom suite includes a dressing room and an en-suite shower room. The three additional bedrooms are all of good size, and there is a further family bathroom at the front of the house.

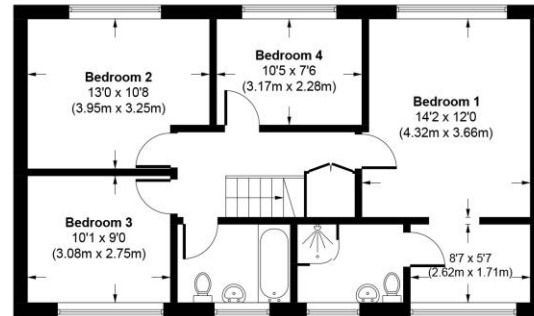


Outside, the property benefits from ample driveway parking in front of the double garage. The delightful, mature gardens wrap around three sides of the house and feature various lawned areas bordered by trees, shrubs, and flowering plants. A charming rear patio, flanked by raised stone planters, offers a lovely space for outdoor dining or relaxation, while there are multiple secluded spots dotted around the garden to enjoy throughout the day.

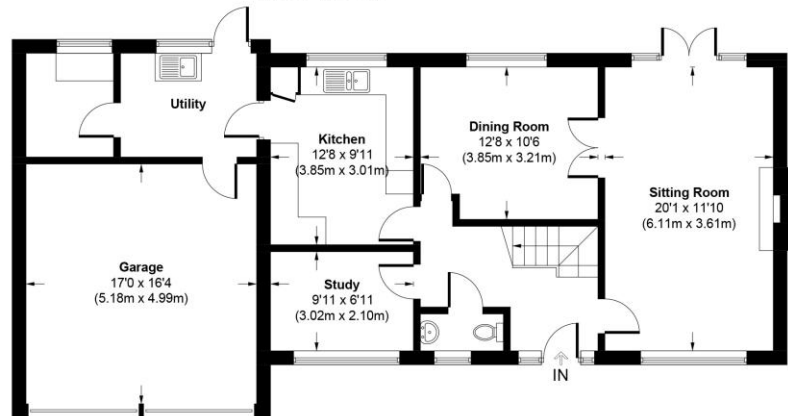


Springvale Avenue, SO23 7LH

Approximate Gross Internal Area
Main House = 1879 Sq Ft / 174.6 Sq M
(Including Garage)



FIRST FLOOR



GROUND FLOOR

This plan is for illustrative purposes only and is not to scale. If specified, the Gross Internal Area (GIA), dimensions, North point orientation and the size and placement of features are approximate and should not be relied on as a statement of fact. No guarantee is given for the GIA and no responsibility is taken for any error, omission or misrepresentation.



Springvale Avenue, Kings Worthy, Winchester,
Hampshire, SO23 7LH

Directions

From Jewry Street continue past the Theatre Royal on your left and follow the road as it becomes Hyde Street. At the end turn right onto Worthy Road. Follow Worthy Road for approximately 1.5 miles, turning left into Bedford lane. At the end turn right into Springvale Road. Continue along Springvale Road the turn left into Springvale Avenue.

Location

Springvale Road is in the established village of Kings Worthy, with easy access to Winchester's city amenities. Local conveniences include a Tesco Express, post office, and welcoming village pubs such as The King Charles. Well-regarded schools are nearby, including Kings Worthy Primary and Henry Beaufort. Regular bus links connect to central Winchester, while the A34 and M3 offer direct road routes. Winchester station, just three miles away, provides fast services to London Waterloo, ideal for commuters and families alike.

COUNCIL TAX: Band F, Winchester City Council.

SERVICES: Mains Gas, Electricity, Water & Drainage.

BROADBAND: Fibre to the Cabinet Broadband. Checked on Openreach June 2025.

MOBILE SIGNAL: Coverage With Certain Providers.

HEATING: Mains Gas Central Heating.

TENURE: Freehold.

EPC RATING: C

PARKING: Off street parking on driveway.

Viewings

Strictly by appointment with Winkworth Winchester Office

[Winkworth.co.uk/winchester](https://www.winkworth.co.uk/winchester)

Winkworth Winchester

72 High Street, Winchester, SO23 9DA
01962 866 777 | winchester@winkworth.co.uk

Winkworth Country House Department

13 Charles II Street, St James's, London, SW1Y 4QU
020 7870 4878 | countryhouse@winkworth.co.uk

Winkworth

See things differently