



CHAPEL HOUSE, DEVIZES

Winkworth



CHAPEL HOUSE, NORTHGATE STREET, DEVIZES, WILTSHIRE, SN10 1JL

A sympathetically converted Chapel, now a fabulous, five bedroomed, family home, presented in immaculate condition and within walking distance of the town center.

Chapel House, dates back to around 1776, and has been imaginatively converted into a wonderful, family sized home. Brick built with a slate roof, the building was originally a United Reformed Chapel. It is Grade II listed and attached at the rear. The conversion has maintained most of the original features of the building, reflecting its original purpose, with large gothic, stained glass, mullioned windows, and original cornicing. The central living space is double height, mitigated by a clever raised central area with a dramatic, winged staircase at its center. A large, stone fireplace houses a log burner which effectively heats the entire space. There is a large kitchen with dining and sitting spaces - a room to live in. A boot room and utility room follow on from this with wine racks and pantry area as well as laundry space. On the far side is a separate office space.

Upstairs to one side are the master bedroom with ensuite shower room, family bathroom and two further double bedrooms. To the other side are two further guest bedrooms with en suite shower rooms.

Outside, part of the original cemetery can still be seen in one corner of the garden, with a large lawned area, terrace to the front and further lawn to one side giving views across to Wadworth Brewery. To the other side is a garden/bin storage area and parking for one or two cars. The garden is completely enclosed, and the property is accessed via large wooden gates from the Wansbroughs Car Park.

Gas fired Central Heating and mains drainage
EPC Exempt due to listing



AT A GLANCE

Double height sitting room
Open plan kitchen / dining / family room
Utility/Pantry
WC
Study
Upstairs:
Master Bedroom with ensuite bathroom
Family Bathroom
Two further double bedrooms
Guest bedroom with ensuite shower room
Double bedroom
Outside:
Gardens with attractive terrace, lawns and mature trees and planting
Parking

LOCATION

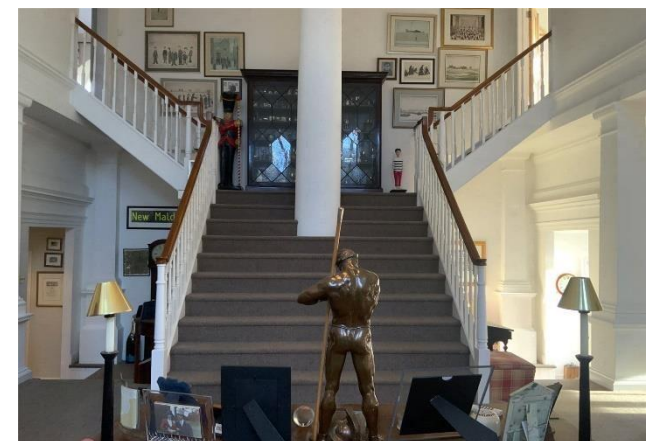
Devizes is a pretty market town with a range of shops and supermarkets, cafes and restaurants. There is a weekly produce market and a lively annual timetable of festivals and events. The cinema is being refurbished and there is a theatre, library and museum plus several doctors and dentists.

Schooling is good for all ages with primaries at nearby Bishops Cannings and Quakers Walk and a secondary on The Green in town. In the private sector, there are St Mary's and St Margaret's in Calne, Dauntsey's and of course, Marlborough College.

The historic cities of Bath and Salisbury are easily less than an hour and stations at Chippenham and Pewsey go into London Paddington in just over an hour. There are also school buses from the Market Place to most of the schools.

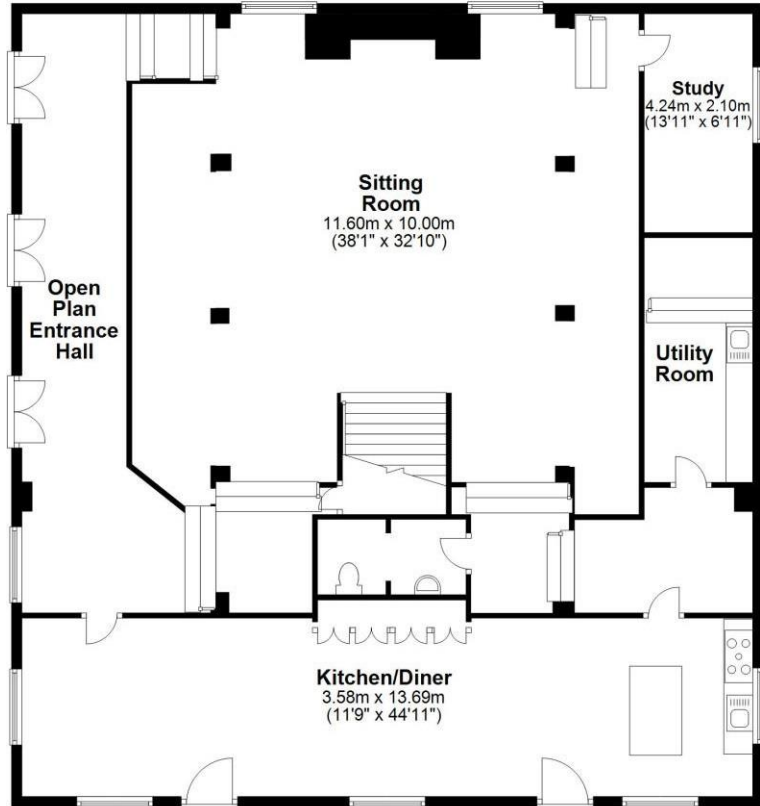
DIRECTIONS

From our office in the Market Place, head North towards the Brewery and go straight over the mini roundabout. Just before the large Gaigers building on the left, turn left into Northgate Gardens and go into the Wansboroughs Car park then continue down to the lower area. The large black gates on the far side are the gates to the property.



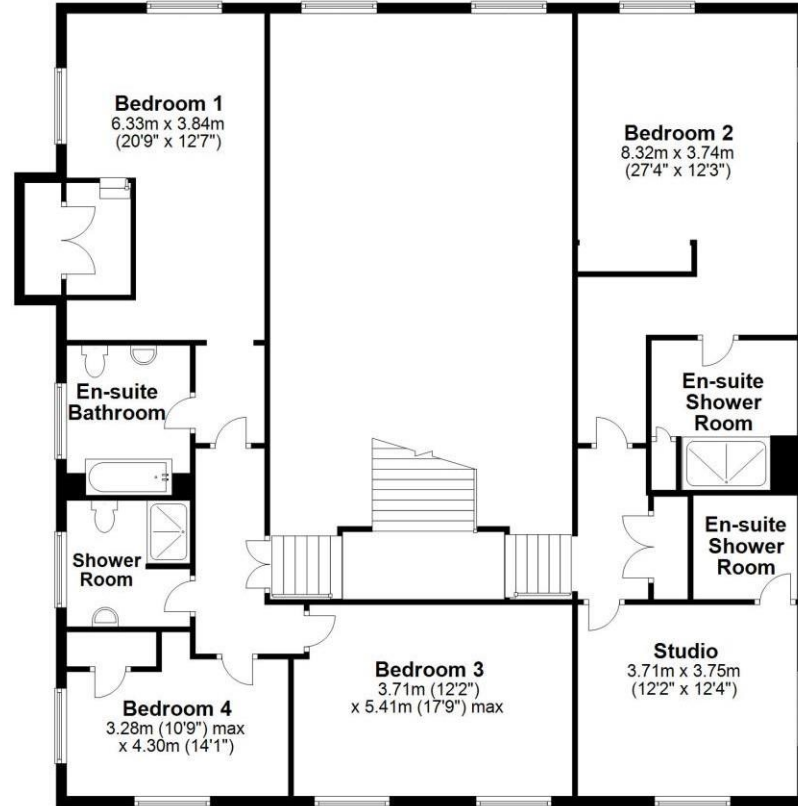
Ground Floor

Approx. 216.1 sq. metres (2325.8 sq. feet)



First Floor

Approx. 200.6 sq. metres (2159.0 sq. feet)



Total area: approx. 416.7 sq. metres (4484.8 sq. feet)

Salisbury | 01722 443 000 | salisbury@winkworth.co.uk

winkworth.co.uk

Winkworth wishes to inform prospective buyers and tenants that these particulars are a guide and act as information only. All our details are given in good faith and believed to be correct at the time of printing but they don't form part of an offer or contract. No Winkworth employee has authority to make or give any representation or warranty in relation to this property. All fixtures and fittings, whether fitted or not are deemed removable by the vendor unless stated otherwise and room sizes are measured between internal wall surfaces, including furnishings.

