



HORMEAD ROAD, LONDON, W9
OFFERS OVER £750,000 LEASEHOLD

Winkworth



HORMEAD ROAD, LONDON, W9

A fantastic well-planned and beautifully designed two-bedroom flat on the second and third floors of this stunning period conversion. This outstanding home has been renovated to an exceptional standard with no expense spared. The property has a modern yet classic feel and has been nurtured and maintained to the highest standard. The property has an abundance of natural light and has a great ceiling height.

The property is entered on the first floor via the internal staircase leading to a double bedroom with fitted storage. The next level has a wonderful double aspect reception room with the living space to the front of the building with three large sash windows and kitchen is situated in the rear with another window. The third floor comprises of a lavish good sized master bedroom with plenty of space to add fitted wardrobes. The property has exceptionally high standard fixtures and fittings throughout, a must see!



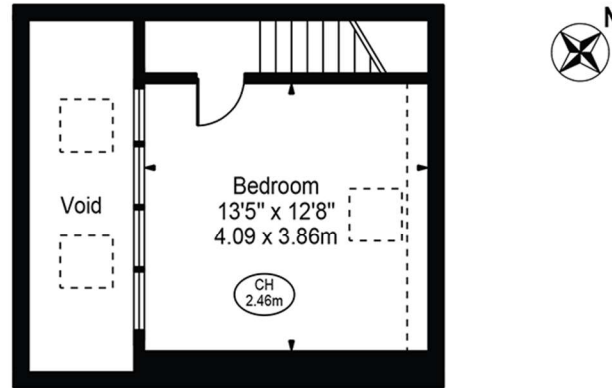
Located on a quiet up and coming Victorian street very close to the Golborne and Portobello roads in one direction and Maida Vale in the other, and a mere four-minute walk to Westbourne Park tube station.

LEASEHOLD: 111 YEARS
GROUND RENT: £250
SERVICE CHARGE: £2916.34

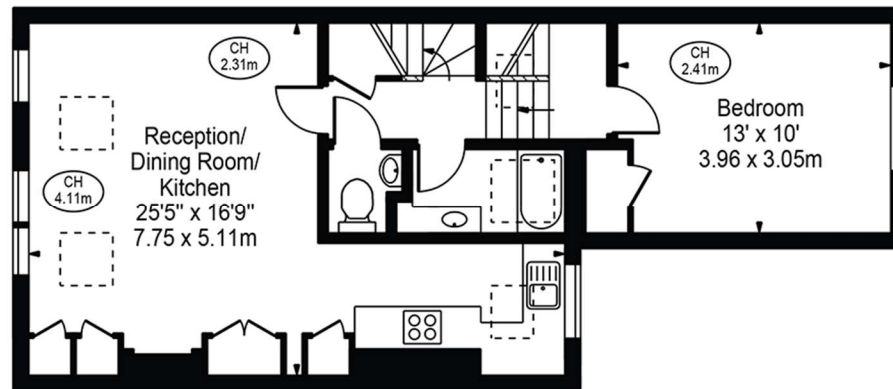


Hormead Road

Approx. Gross Internal Area 808 Sq Ft - 75.07 Sq M



Third Floor
(211 Sq Ft - 19.60 Sq M)



Second Floor
(580 Sq Ft - 5.88 Sq M)

For Illustration Purposes Only - Not To Scale

This floor plan should be used as a general outline for guidance only and does not constitute in whole or in part an offer or contract. Any intending purchaser or lessee should satisfy themselves by inspection, searches, enquiries and full survey as to the correctness of each statement. Any areas, measurements or distances quoted are approximate and should not be used to value a property or be the basis of any sale or let.

Copyright Morriarti Photography & Design LTD

Score	Energy rating	Current	Potential
92+	A		
81-91	B		
69-80	C		73 C
55-68	D	62 D	
39-54	E		
21-38	F		
1-20	G		

North Kensington | 020 7792 5000 | northkensington@winkworth.co.uk

winkworth.co.uk

Winkworth wishes to inform prospective buyers and tenants that these particulars are a guide and act as information only. All our details are given in good faith and believed to be correct at the time of printing but they don't form part of an offer or contract. No Winkworth employee has authority to make or give any representation or warranty in relation to this property. All fixtures and fittings, whether fitted or not are deemed removable by the vendor unless stated otherwise and room sizes are measured between internal wall surfaces, including furnishings.

Winkworth