

St. Georges Square, UK, SW1V

£2,816.67 PER MONTH

FURNISHED

AT A GLANCE

- Two Double Bedrooms
- Large Reception
- Separate Kitchen
- Family Bathroom
- Great Views
- Council Tax Band: F

Winkworth

for every step...



Score	Energy rating	Current	Potential
92+	A		
81-91	B		
69-80	C		77 C
55-68	D	64 D	
39-54	E		
21-38	F		
1-20	G		

ST. GEORGES SQUARE, UK, SW1V

£2,816.67 PER MONTH

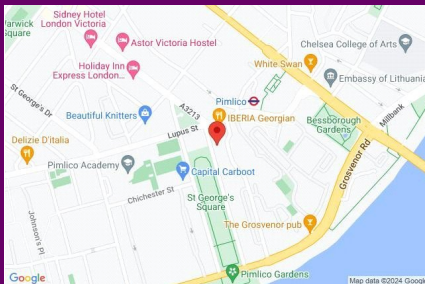
FURNISHED

A well presented, two double bedroom apartment forming part of a handsome stucco fronted building overlooking the desirable St George's Square.

Accommodation is arranged over the top floor and comprises a spacious reception with plenty of room to dine and entertain, modern fitted kitchen, two double bedrooms with storage and a family bathroom.

St George's Square is a large garden square next to the River Thames and is conveniently located close to the coffee shops, restaurants and local amenities of Moreton, Churton and Lupus Street.

Nearest public transport can be found moments away at Pimlico Underground Station offering a direct link to North, Central and South London via the Victoria Line.

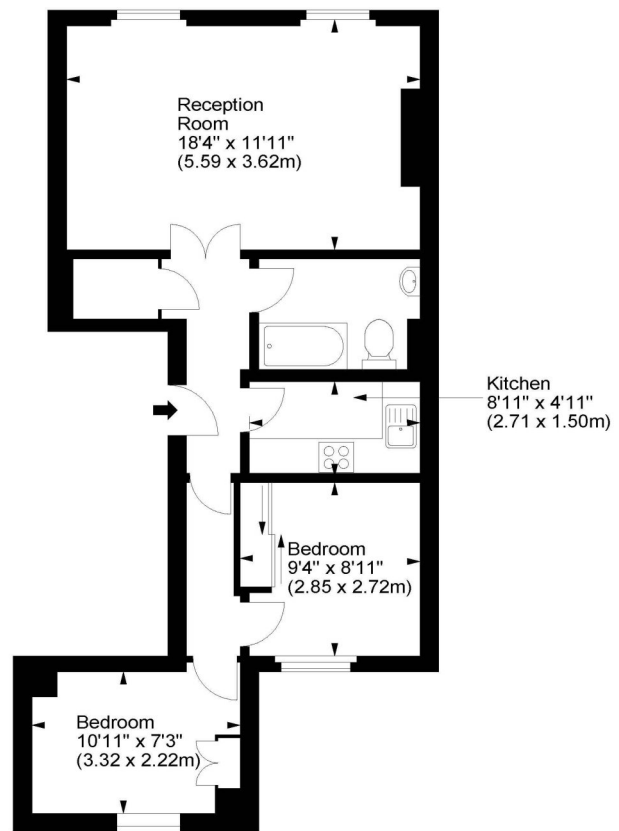


winkworth wishes to inform prospective buyers and tenants that these particulars are a guide and act as information only. All our details are given in good faith and believed to be correct at the time of printing but they don't form part of an offer or contract. No winkworth employee has authority to make or give any representation or warranty in relation to this property. All fixtures and fittings, whether fitted or not are deemed removable by the vendor unless stated otherwise and room sizes are measured between internal wall surfaces - including fireplaces.

St Georges Square, SW1



Approx. Gross Internal Area
577 Sq Ft - 53.60 Sq M



Third Floor

For illustration purposes only. Not to scale.
All measurements are taken and shown at floor level.
www.r3photography.co.uk © Photography / Floor Plans / Lease Plans / EPCs



Pimlico & Westminster | 020 7828 1786 |
pimlico@winkworth.co.uk

winkworth.co.uk/pimlico

Winkworth

for every step...