



Southampton Street, Reading, RG1 2QU

£1,450 per month *Unfurnished*

2  1  1 

Brand new two bedroom first floor apartment with lift access within walking distance of Reading town centre and train station. Accommodation comprises open plan living room / kitchen with integrated appliances (including dishwasher), two double bedrooms, utility cupboard and a modern three piece bathroom. The development benefits from cycle storage, video intercom and lift access. Available now. Unfurnished.

KEY FEATURES

- Brand new apartment
- First floor
- Two bedrooms
- No parking
- Council tax band TBC
- Available now
- Unfurnished

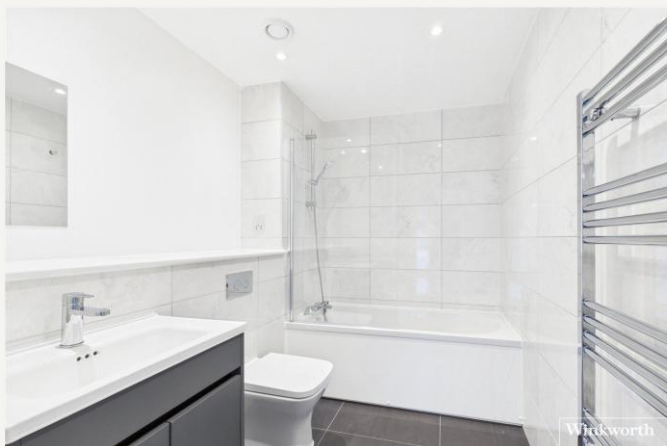


Reading

0118 4022 300 | reading@winkworth.co.uk

Winkworth

for every step...





MATERIAL INFO

Deposit: £1,673.08

Holding Deposit: £334.61

Council Tax Band: TBC

EPC rating: B

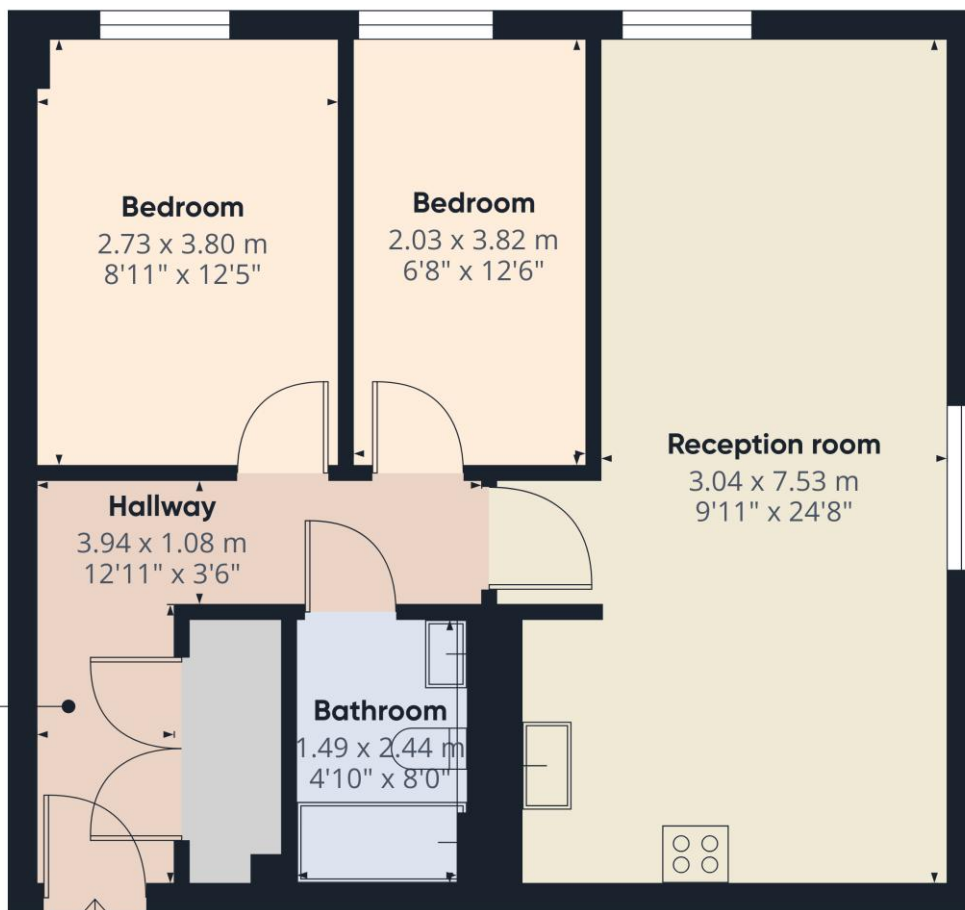
Approximate total area⁽¹⁾
57.6 m²
621 ft²

(1) Excluding balconies and terraces

Calculations reference the RICS IPMS 3C standard. Measurements are approximate and not to scale. This floor plan is intended for illustration only.

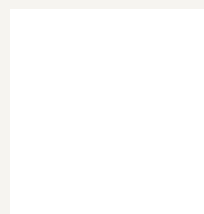
GIRAFFE360

Hallway
1.28 x 2.51 m
4'2" x 8'2"



Score	Energy rating	Current	Potential
92+	A		
81-91	B	89 B	89 B
69-80	C		
55-68	D		
39-54	E		
21-38	F		
1-20	G		

For more information, scan the QR code or visit the link below



<https://www.winkworth.co.uk/rent/property/REA260025>

Where no figures are shown, we have been unable to ascertain the information. All figures that are shown were correct at the time of printing.

Reading

0118 4022 300 | reading@winkworth.co.uk

Winkworth

for every step...

Winkworth wishes to inform prospective buyers and tenants that these particulars are a guide and act as information only. All our details are given in good faith and believed to be correct at the time of printing but they don't form part of an offer or contract. No Winkworth employee has authority to make or give any representation or warranty in relation to this property. All fixtures and fittings, whether fitted or not are deemed removable by the vendor unless stated otherwise and room sizes are measured between internal wall surfaces, including furnishings.