



5 TOOMERS WHARF

NEWBURY RG14 1DY

A superbly finished, brand new, top floor apartment in the heart of Newbury town centre.

The property has a large, open plan, living, eating, kitchen area, with Juliette balcony, perfect for throwing open on warm summer days. The kitchen is super modern, with integrated appliances and there is good quality wood flooring.

The double bedroom has integrated wardrobes and there is a stylish bathroom with shower over the bath.

Gas central heating, security entryphone and off road parking for one car complete this stunning apartment.



Winkworth

AT A GLANCE

508 Square feet/ 47 square metres
Double bedroom
Bathroom
Open plan living/ kitchen
Juliette balcony
Gas central heating
One off road parking space
Architects certificate

UTILITIES

Mains water, electricity, drainage and gas.
Gas fired central heating
West Berkshire Council Band A
EPC TBC

SITUATION

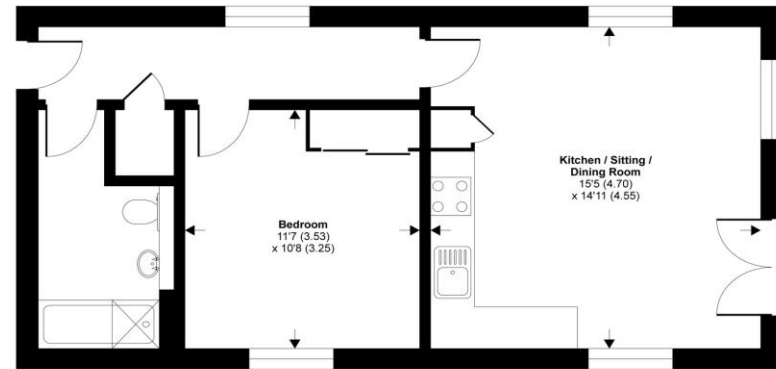
The property is situated in Toomers Wharf, a riverside development in the heart of the town centre.

DIRECTIONS

For sat nav RG14 1DY.

Toomers Wharf, Canal Walk, Newbury, RG14

Approximate Area = 508 sq ft / 47.1 sq m
For identification only - Not to scale



SECOND FLOOR



Floor plan produced in accordance with RICS Property Measurement Standards incorporating International Property Measurement Standards (IPMS2 Residential). © richcom 2021. Produced for Winkworth. REF: 752803



Newbury Office

43 Northbrook Street, Newbury, Berkshire RG14 1DT
01635 552552 | newbury@winkworth.co.uk

winkworth.co.uk/newbury

Winkworth

See things differently.