



**BRYANSTON COURT, GEORGE STREET, W1H**  
**£1,150 PER WEEK FURNISHED**

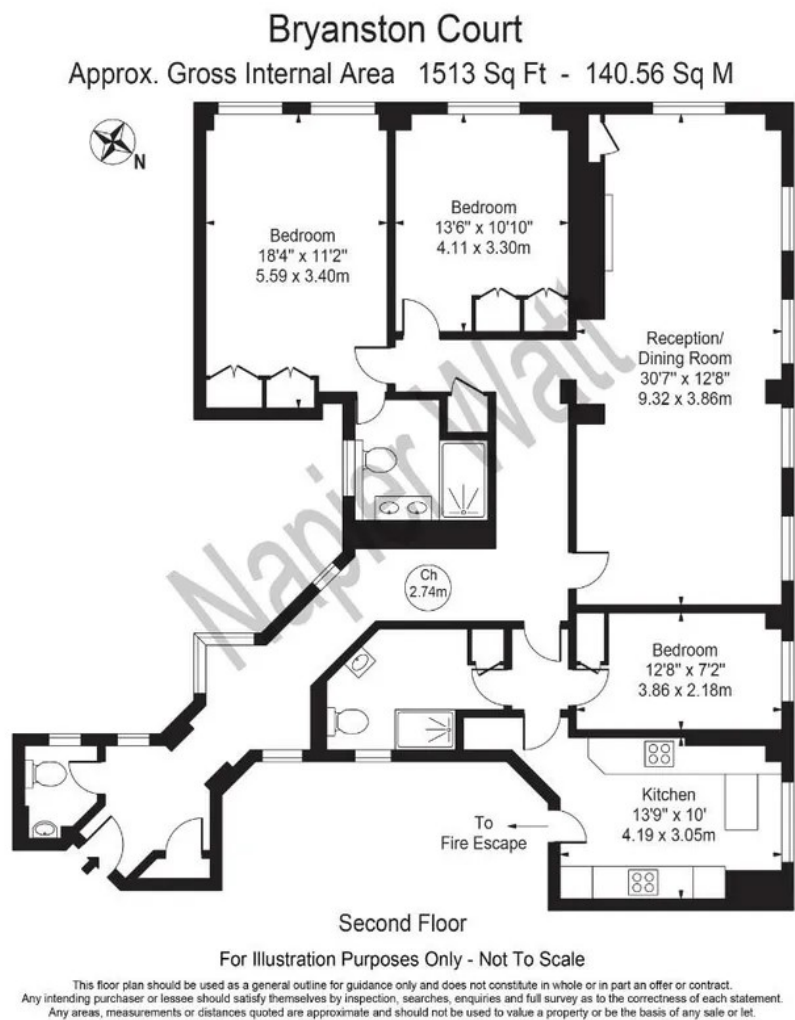
## **TWO-BEDROOM, LATERAL APARTMENT**

**Mayfair & Marylebone** | 0207 589 6616 | [mayfair@winkworth.co.uk](mailto:mayfair@winkworth.co.uk)

Tenant Fees Apply: Details of fees for tenant referencing, tenancy agreement admin fees and renewal fees are available on the Winkworth website and the link can be found with the displayed rent for the property. Tenants should ensure they are fully conversant with these upfront fees and other costs that are involved at the outset of the tenancy before making an offer to rent and your local Winkworth office will provide written details upon request.

DESCRIPTION:

Two-bedroom, lateral apartment in a classic style, set in this highly sought-after block in the heart of Marylebone. This second floor property (with lift) boasts a modernised kitchen and bathroom as well as wooden flooring in the living room and hallways. Comprising a double living room with ample space for dining area, master bedroom with built-in wardrobes and ensuite, two further bedrooms, separate shower room and guest cloakroom. Marylebone is one of London's most fashionable areas, famous for boutique shops, green spaces and excellent transport links.



This floorplan is for illustration purposes only and is not to scale. The position and size of doors, windows, appliances and other features are approximate.

Score	Energy rating	Current	Potential
92+	A		
81-91	B		83 B
69-80	C	69 C	
55-68	D		
39-54	E		
21-38	F		
1-20	G		

**Deposit:** £5,750  
**Holding Deposit:** £1,150  
**Council Tax Band:**  
Where no figures are shown, we have been unable to ascertain the information. All figures that are shown were correct at the time of printing.