

GREYHOUND ROAD, NW10

£4,250 PER MONTH PART FURNISHED / UNFURNISHED

A BEAUTIFUL, RECENTLY RENOVATED, FOUR BEDROOM FAMILY HOME IN A GREAT LOCATION JUST TO THE WEST OF KENSAL GREEN STATION.

Kensal Rise & Queens Park | 0208 960 4947 | kensalrise@winkworth.co.uk

Winkworth

for every step...

winkworth.co.uk



DESCRIPTION:

This lovely home is perfect for a young family looking to rent their own piece of Kensal Green.

The property was built circa 1900 and now fully modernised has accommodation arranged over three floors including a recently converted loft space forming the forth bedroom and additional bathroom.

On the first floor there is a further three bedrooms one of which is ideally to be used as an office / walk in wardrobe due to the nature of the bespoke built in storage and a fully tiled three piece family bathroom with towel rail.

Downstairs floods with natural light as the property benefits from a rear side extension and this modern space is where the eat-in kitchen fitted with all modern appliances to include an American full size fridge & wine fridge as well as under floor heating and in-built Sonos sound system. There is a utility room with a separate washing machine and dryer, and additional storage space.

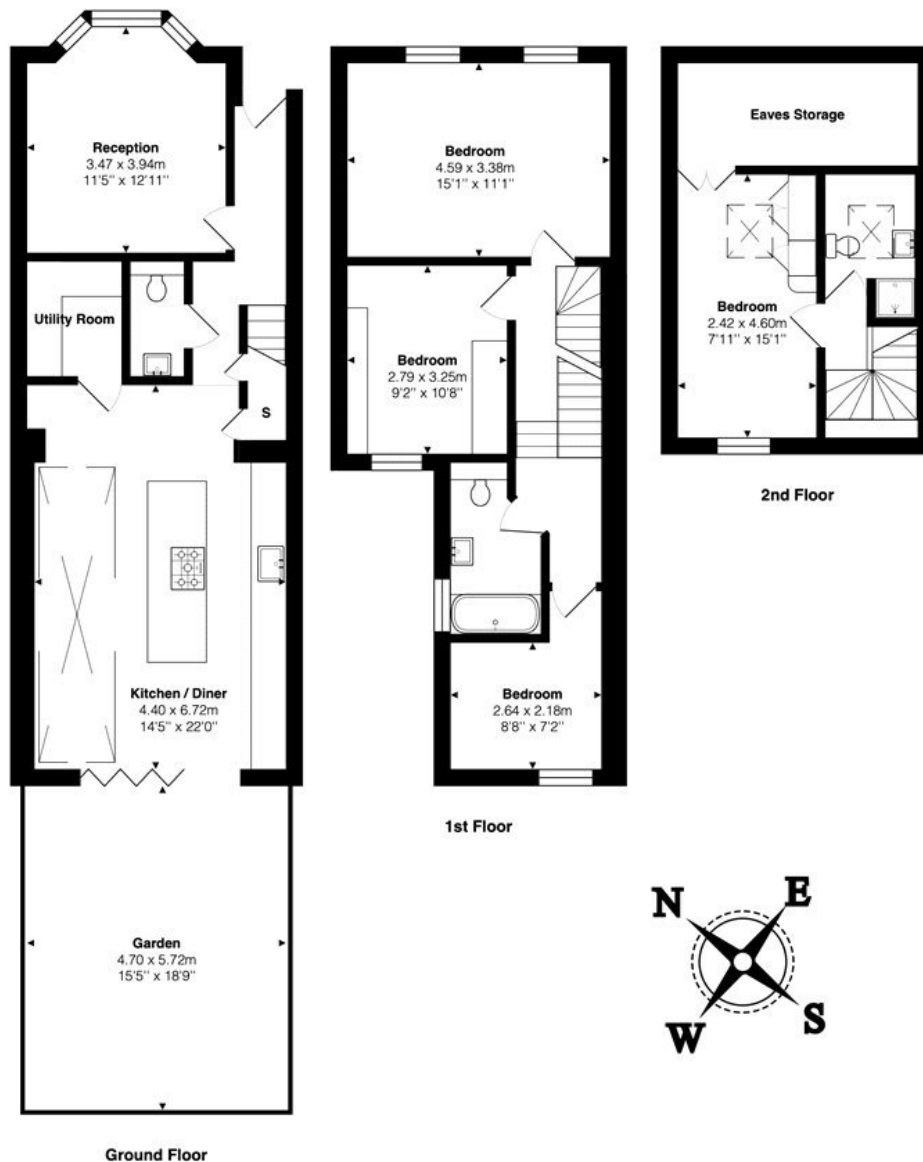
Through bi-fold doors from the kitchen there is a private rear garden which provides a lovely, relaxing space.

To the front of the property tenants will enjoy a snug reception room with wooden flooring and shutters.

Altogether a wonderful home in great condition throughout.

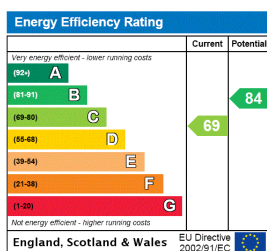
Furnishing - Sofa in the front living room & dining table + chairs in the kitchen.





Total Area: 120.2 m² ... 1293 ft² (excluding garden, eaves storage)
 All measurements are approximate and for display purposes only

This floorplan is for illustration purposes only and is not to scale. The position and size of doors, windows, appliances and other features are approximate.



Deposit: 6 weeks rent

Holding Deposit: 1 weeks rent

Council Tax Band: D

Where no figures are shown, we have been unable to ascertain the information. All figures that are shown were correct at the time of printing.

Winkworth

for every step...

Kensal Rise & Queens Park | 0208 960 4947 | kensalrise@winkworth.co.uk

winkworth.co.uk

Winkworth wishes to inform prospective buyers and tenants that these particulars are a guide and act as information only. All our details are given in good faith and believed to be correct at the time of printing but they don't form part of an offer or contract. No Winkworth employee has authority to make or give any representation or warranty in relation to this property. All fixtures and fittings, whether fitted or not are deemed removable by the vendor unless stated otherwise and room sizes are measured between internal wall surfaces, including furnishings.