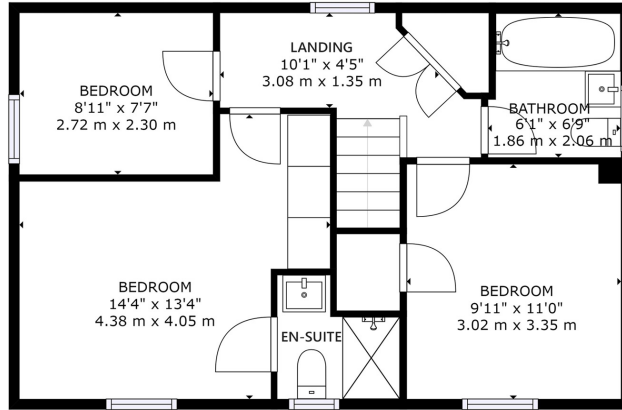


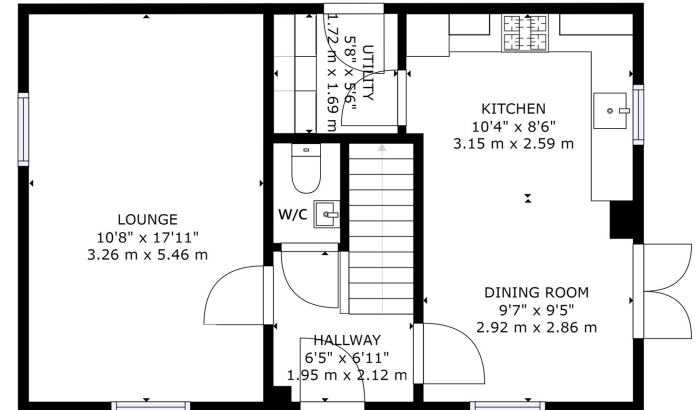


17 Coppins Close
Ferndown, BH22 8FA
GUIDE PRICE £495,000

Winkworth



FLOOR 2



FLOOR 1

GROSS INTERNAL AREA
 FLOOR 1: 496 sq. ft, 46 m2, FLOOR 2: 502 sq. ft, 47 m2
 TOTAL: 998 sq. ft, 93 m2
 SIZES AND DIMENSIONS ARE APPROXIMATE, ACTUAL MAY VARY.





GUIDE PRICE - £495,000 FREEHOLD

01202 434365 | ferndown@winkworth.co.uk

**LOVELY THREE BEDROOM DETACHED HOME
POSITIONED ON THIS EVER POPULAR DEVELOPMENT WITH
SPECTACULAR, UNINTERRUPTED VIEWS.
LOCATED ON THE BORDERS OF WEST PARLEY AND FERNDOWN
THIS PROPERTY HAS TO BE SEEN TO BE TRULY APPRECIATED!**

Master En-suite | Uninterrupted Views | Allocated Parking For Two Cars
Kitchen/Diner | Utility Room | Downstairs Cloakroom
Detached | Sought After Development
On Local Bus Routes & Close To Shops | Potential To Extend STPP





LOCATION

A short distance from Ferndown town centre which has a range of shops, cafes and amenities including an M&S Food Hall. You can explore the outdoors at nearby Longham Lakes and the River Stour, close by bus routes give you easy access to Bournemouth & Poole, both of which have a large range of facilities as well as award winning sandy beaches. The nearby A31 provides quick access to the New Forest, Southampton and beyond for the commuter by car.

Winkworth Ferndown

406 Ringwood Road, Ferndown, Dorset, BH22 9AU

01202 434365 | ferndown@winkworth.co.uk

winkworth.co.uk/ferndown

Winkworth