

MILLBANK, UK, SW1P

£600,000

SHARE OF FREEHOLD

At a glance...

- One Double Bedroom
- Communal Gardens
- Porter
- Ground Floor
- Council Tax Band E

Winkworth

for every step...



Energy Efficiency Rating		
	Current	Potential
Very energy efficient - lower running costs		
(92+) A		
(81-91) B		
(69-80) C		
(55-68) D		68
(39-54) E	49	
(21-38) F		
(1-20) G		
Not energy efficient - higher running costs		
England, Scotland & Wales	EU Directive 2002/91/EC	

MILLBANK, UK, SW1P

£600,000

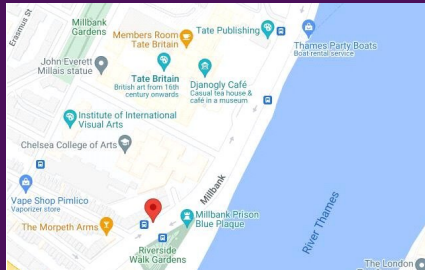
SHARE OF FREEHOLD

Positioned on the raised ground floor this excellent one bedroom flat is presented in good decorative order throughout. Briefly the accommodation offers a lovely reception room with high ceilings and overlooking the river, a good size bedroom with great storage, smart bathroom and separate modern kitchen.

The building offers a porter and has extensive communal gardens.

Fantastically located for Pimlico, Vauxhall and Victoria stations and within easy reach of Westminster and the houses of parliament this flat would make an incredible central London base or home.

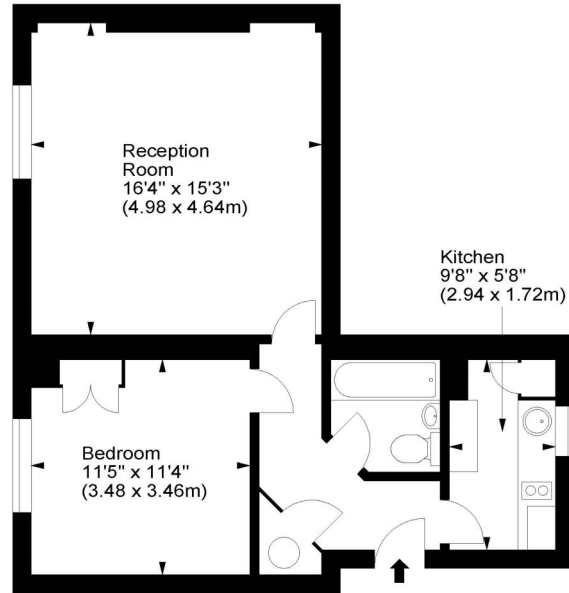
Share of Freehold.



winkworth wishes to inform prospective buyers and tenants that these particulars are a guide and act as information only. All our details are given in good faith and believed to be correct at the time of printing but they don't form part of an offer or contract. No winkworth employee has authority to make or give any representation or warranty in relation to this property. All fixtures and fittings, whether fitted or not are deemed removable by the vendor unless stated otherwise and room sizes are measured between internal wall surfaces - including fire-chimneys.

Millbank, SW1

Approx. Gross Internal Area
569 Sq Ft - 52.86 Sq M



Ground Floor

For illustration purposes only. Not to scale.
All measurements are taken and shown at floor level.
www.r3photography.co.uk © Photography / Floor Plans / Lease Plans / EPCs



Pimlico & Westminster

020 7828 1786

pimlico@winkworth.co.uk

winkworth.co.uk/pimlico-westminster

Winkworth

for every step...