



LOWDEN ROAD, KIDBROOKE VILLAGE, SE3 9JG
GUIDE PRICE £400,000-£445,000 LEASEHOLD

WITH SUPERB VIEWS AND FOUND ON THE 13TH FLOOR OF THIS NEWLY BUILT BLOCK, IS THIS SPACIOUS ONE BEDROOM MODERN APARTMENT WITHIN THE PRESTIGIOUS KIDBROOKE VILLAGE.

Blackheath | 0208 8520999 | blackheath@winkworth.co.uk

Winkworth

for every step...

winkworth.co.uk



DESCRIPTION:

The accommodation comprises; a large entrance hall with storage and utility cupboards, a large and bright reception room with open plan kitchen and a private terrace which offers superb views over southeast London. The master bedroom boasts built in wardrobes and there is a very attractive modern bathroom. Further benefits from a 24 hour concierge, communal gardens and gymnasium. The property is immaculately presented throughout with floor to ceiling windows in every room and plenty of light.

This is an outstanding apartment which has been priced to sell and your immediate viewing is essential. Video tour can be seen at Winkworth.co.uk

Quill House is part of the prestigious Kidbrooke Village – an award winning Berkeley Homes development. This is a completely new and vibrant London community offering an outstanding choice of quality, sustainable new homes. As well as new homes, it offers a new park, sports facilities, and a variety of local amenities a stone's throw away including Sainsbury's, Starbucks, Gym, Pharmacy, Doctors, Pub, Dentist, Beauty Salon and Nursery.

Transport links to central London are very close via the newly rebuilt Kidbrooke station with regular trains to London Bridge (16 minutes), Waterloo East (22 minutes), Charing Cross (26 minutes), Cannon Street (25 minutes) and Victoria (31 minutes). There's a direct bus to North Greenwich where you can get on the Jubilee line and access to Canary Wharf and the Olympic Park and central London. Blackheath Village with its open green spaces offers an array of boutiques, daily conveniences, bars and restaurants and is only moments away. The Ofsted outstanding Wingfield Primary Schools is within ¼ mile. Close by are several highly sought-after Independent Schools including; Blackheath Preparatory School, The Pointer School, Heath House Preparatory School, Blackheath High Junior School, Blackheath High Seniors School, Colfes (1.1 miles) and Eltham College (2.2miles).

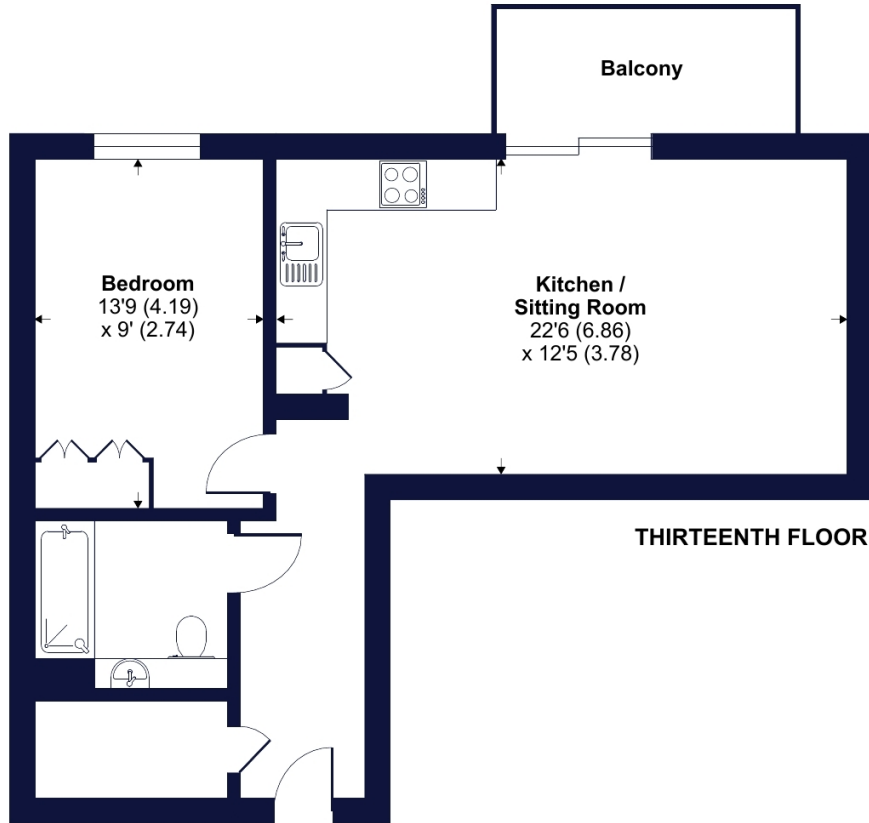




Plowden Road, London, SE3

Approximate Area = 559 sq ft / 52 sq m

For identification only - Not to scale



Floor plan produced in accordance with RICS Property Measurement 2nd Edition, Incorporating International Property Measurement Standards (IPMS2 Residential). © nchecom 2024. Produced for Winkworth. REF: 1281632

Winkworth

This floorplan is for illustration purposes only and is not to scale. The position and size of doors, windows, appliances and other features are approximate. Any lease and service charge details have been provided by the vendor. Any interest party should have these checked by a solicitor as part of the purchase process.

Score	Energy rating	Current	Potential
92+	A		
81-91	B	81 B	81 B
69-80	C		
55-68	D		
39-54	E		
21-38	F		
1-20	G		

Winkworth

for every step...

winkworth.co.uk

Winkworth wishes to inform prospective buyers and tenants that these particulars are a guide and act as information only. All our details are given in good faith and believed to be correct at the time of printing but they don't form part of an offer or contract. No Winkworth employee has authority to make or give any representation or warranty in relation to this property. All fixtures and fittings, whether fitted or not are deemed removable by the vendor unless stated otherwise and room sizes are measured between internal wall surfaces, including furnishings.