



CHAUCER ROAD, SE24
£1,650 PER MONTH PART FURNISHED

A LARGE SPLIT LEVEL ONE BEDROOM
VICTORIAN CONVERSION WITH A SHARED
GARDEN IN POETS' CORNER, HERNE HILL

Herne Hill | 0207 501 8950 | hernehill@winkworth.co.uk

Winkworth

for every step...

winkworth.co.uk



DESCRIPTION:

This charming Victorian maisonette, located in the desirable Poets' Corner and available exclusively through Winkworth, is a must-see for any prospective renter. With its own front door and ample space, this property is perfect for those looking for a comfortable and stylish home. This ground floor maisonette features a spacious double bedroom with a bay window to front and built-in storage, as well as a well-proportioned reception room with French doors leading out to a shared south-facing garden (split between two flats). The large kitchen-diner, complete with an exposed brick wall, also gives access to the garden, making it the perfect spot for outdoor dining or entertaining. Upstairs, you'll find a large shower room, a separate WC, and a storage cupboard, providing plenty of space for all of your essentials. The property comes part-furnished with a dining table and chairs and is available from 21st January 2023.

AT A GLANCE

- Victorian maisonette
- Spacious double bedroom
- Well-proportioned reception room
- Shared south-facing garden
- Large kitchen-diner
- Large shower room
- Separate WC
- Part-furnished
- Available from 21st January 2023





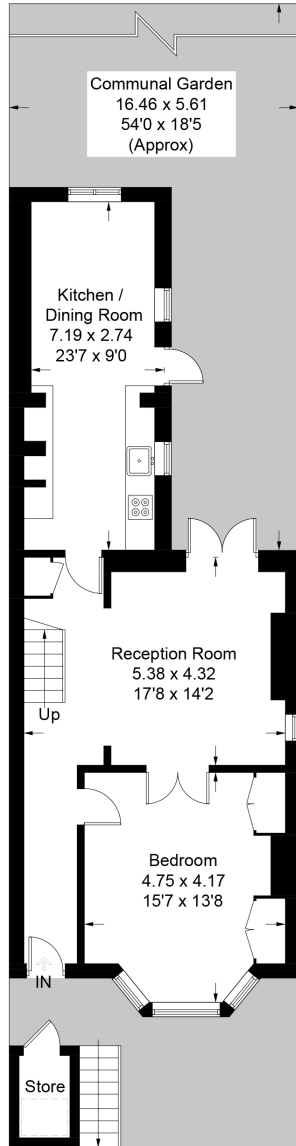
Chaucer Rd, Brixton, SE24

Approximate Gross Internal Area


80 sq m / 861 sq ft

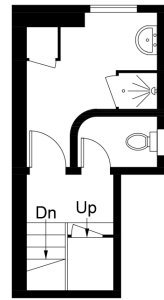
Store = 1.8 sq m / 19 sq ft

Total = 81.8 sq m / 880 sq ft



**Lower Ground Floor
(Excluding Store)**
66.8 sq m / 719 sq ft

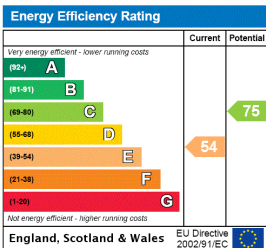
 = Reduced headroom below 1.5m / 5'0



**First Floor
Half Landing**
13.2 sq m / 142 sq ft

This plan is for layout guidance only. Not drawn to scale unless stated. Windows and door openings are approximate. Whilst every care is taken in the preparation of this plan, please check all dimensions, shapes and compass bearings before making any decisions reliant upon them. (ID393629)

This floorplan is for illustration purposes only and is not to scale. The position and size of doors, windows, appliances and other features are approximate.



Herne Hill | 0207 501 8950 | hernehill@winkworth.co.uk



for every step...

winkworth.co.uk

Winkworth wishes to inform prospective buyers and tenants that these particulars are a guide and act as information only. All our details are given in good faith and believed to be correct at the time of printing but they don't form part of an offer or contract. No Winkworth employee has authority to make or give any representation or warranty in relation to this property. All fixtures and fittings, whether fitted or not are deemed removable by the vendor unless stated otherwise and room sizes are measured between internal wall surfaces, including furnishings.