



HIGHBURY QUADRANT, LONDON, N5  
£450,000 LEASEHOLD

A BRIGHT, TWO DOUBLE BEDROOM FIRST FLOOR APARTMENT WITH PRIVATE BALCONY IN N5.

Highbury | 0207 989 7000 | [highbury@winkworth.co.uk](mailto:highbury@winkworth.co.uk)

**Winkworth**

[winkworth.co.uk](http://winkworth.co.uk)

See things differently



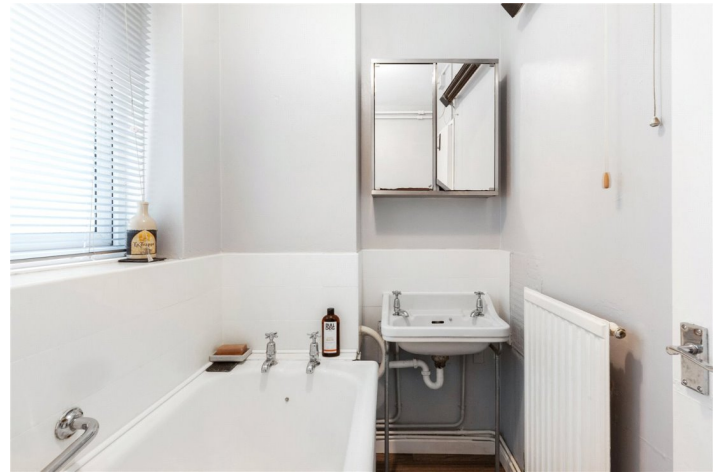


## DESCRIPTION:

Set over the first floor of this well-kept block is this spacious, two double bedrooms flat. The property stands at 655 sqft and offers bright, spacious interiors whilst being tastefully decorated throughout. The reception room is incredibly light due to a Southerly aspect and provides access to a private balcony. A separate kitchen has plentiful worktop space and cupboards, while there would be the possibility to open the living room/kitchen up should that be a preference. Both bedrooms are good sized doubles, while the property is completed with a family bathroom and separate wc.

The property is located moments from Highbury Barn and the open space of Highbury Fields and Clissold Park. Church Street with it's fantastic array of boutique shops, eateries and bars is close by whilst Upper Street is also within easy reach. Fantastic transport links can be found nearby with Arsenal tube station (Piccadilly line) providing the nearest underground travel whilst Finsbury Park station (Victoria line) offers both over ground and underground services and many bus routes are also located nearby offering easy access to the City and West End.

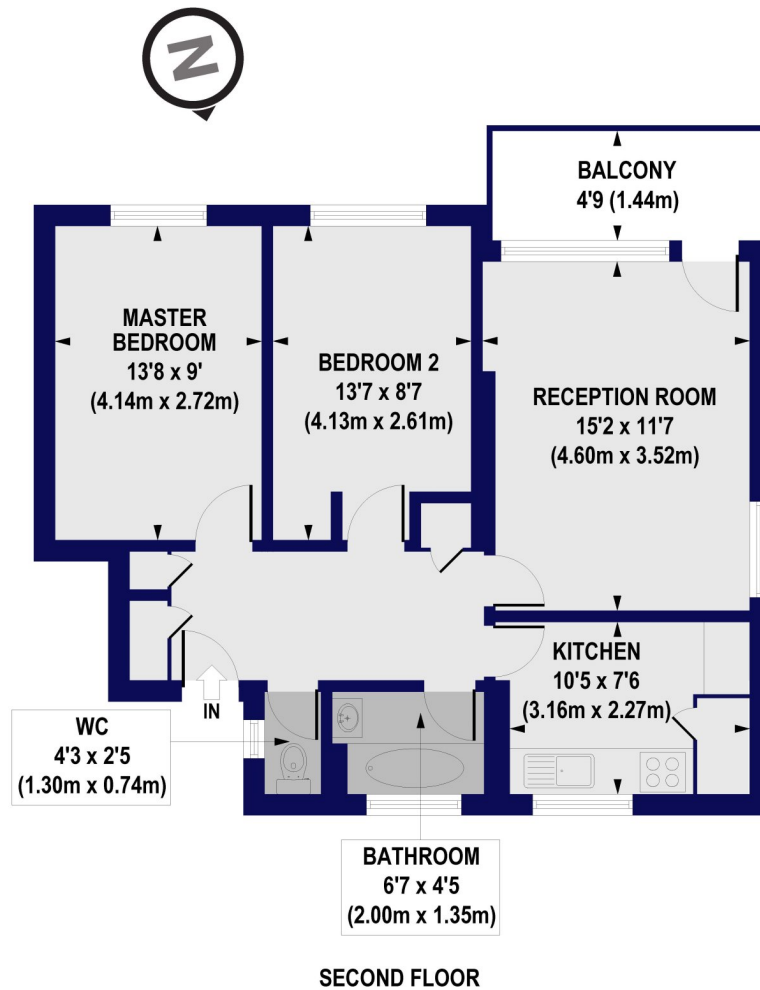
**Winkworth**



**Winkworth**



**Highbury Quadrant, N5**  
Approx. Gross Internal Floor Area 655 sq. ft / 60.86 sq. m



All measurements of walls, doors, windows, fittings and appliances, including their size and location, are shown as standard sizes and do not constitute any warranty or representation by the seller, their agent or CP Creative. Any intending purchaser must satisfy himself by inspection or otherwise as to the correctness of the information contained in these plans. This plan is for illustrative purposes only and should be used as such by any prospective purchasers.

**Winkworth**

This floorplan is for illustration purposes only and is not to scale. The position and size of doors, windows, appliances and other features are approximate.

Highbury | 0207 989 7000 | [highbury@winkworth.co.uk](mailto:highbury@winkworth.co.uk)

**Winkworth**

*winkworth.co.uk*

See things differently

Winkworth wishes to inform prospective buyers and tenants that these particulars are a guide and act as information only. All our details are given in good faith and believed to be correct at the time of printing but they don't form part of an offer or contract. No Winkworth employee has authority to make or give any representation or warranty in relation to this property. All fixtures and fittings, whether fitted or not are deemed removable by the vendor unless stated otherwise and room sizes are measured between internal wall surfaces, including furnishings.