



ARLINGTON ROAD, SW2
£2,000 PER MONTH PART FURNISHED

A LARGE TWO DOUBLE BEDROOM FIRST FLOOR VICTORIAN CONVERSION CLOSE TO BRIXTON AND BROCKWELL PARK

Herne Hill | 0207 501 8950 | hernehill@winkworth.co.uk

Winkworth

for every step...

winkworth.co.uk



DESCRIPTION:

Available exclusively through Winkworth we are delighted to present this Victorian conversion apartment to let. The property has a large reception room to the front with a bay window, two good-size double bedrooms with fitted wardrobes overlooking the rear. There is a separate fitted kitchen equipped with the usual appliances including a dishwasher and a serving hatch/breakfast bar. The bathroom has a shower over the bath, a wash hand basin and a WC. The property benefits from double glazing throughout. Arlingford Road is ideally located for the amenities and transport links of Herne Hill (Thameslink) and Brixton Underground Tube stations (Victoria Line) and is close to the lovely Brockwell Park with its iconic Lido and the Farmers market and Brixton Village is moments away. Available from the 23rd November 2023 on a part furnished basis (please ask Agent for list of furniture to stay).

AT A GLANCE

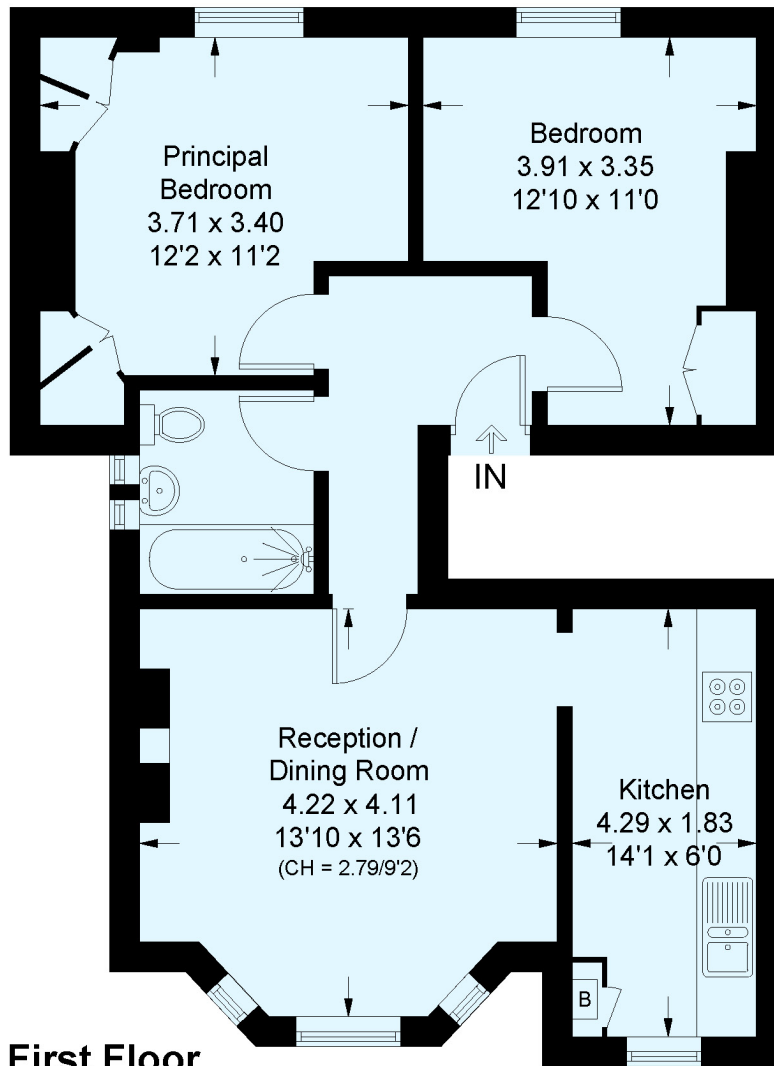
- Victorian Conversion
- First Floor
- Two Double Bedrooms
- Reception/Diner
- Fitted Kitchen with a Breakfast Bar
- Modern Bathroom
- Part-Furnished
- Available 23rd November 2023
- Sole Agent





Arlingford Road, SW2

Approximate Floor Area = 58.1 sq m / 625 sq ft
Including Limited Use Area (0.6 sq m / 6 sq ft)



First Floor

This plan is for layout guidance only. Not drawn to scale unless stated. Windows and door openings are approximate. Whilst every care is taken in the preparation of this plan, please check all dimensions, shapes and compass bearings before making any decisions reliant upon them. (ID893531)

This floorplan is for illustration purposes only and is not to scale. The position and size of doors, windows, appliances and other features are approximate.

Herne Hill | 0207 501 8950 | hernehill@winkworth.co.uk

Winkworth

for every step...

winkworth.co.uk

Winkworth wishes to inform prospective buyers and tenants that these particulars are a guide and act as information only. All our details are given in good faith and believed to be correct at the time of printing but they don't form part of an offer or contract. No Winkworth employee has authority to make or give any representation or warranty in relation to this property. All fixtures and fittings, whether fitted or not are deemed removable by the vendor unless stated otherwise and room sizes are measured between internal wall surfaces, including furnishings.