



LLOYD BAKER STREET, LONDON, WC1X
£1,500,000 FREEHOLD

AN OPPORTUNITY TO PURCHASE THE UPPER THREE FLOORS OF THIS IMPRESSIVE FOUR STOREY MID-VICTORIAN TOWNHOUSE IN THE HEART OF THE LLOYD BAKER ESTATE.

Clerkenwell | 020 7405 1288 | clerkenwell@winkworth.co.uk

Winkworth

for every step...

winkworth.co.uk

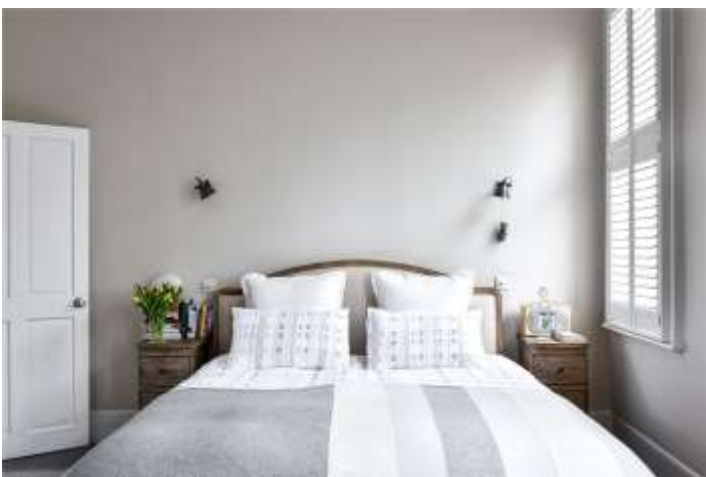


DESCRIPTION: This freehold property, comprises; a large open plan kitchen living room on the ground floor leading onto a private garden; the master suite covers the entire first floor, three further bedrooms and family bathroom are on the second floor. The attractive, private garden is exposed to both morning and afternoon sun. Lloyd Baker Street is ideally located for all the amenities of Clerkenwell and Upper Street with Exmouth Market also being in close proximity. The City is within walking distance and there is a wealth of transport links to choose from including Kings Cross, Angel and Farringdon stations as well as many bus routes leading to many close-by destinations including the West End.



Winkworth

for every step...

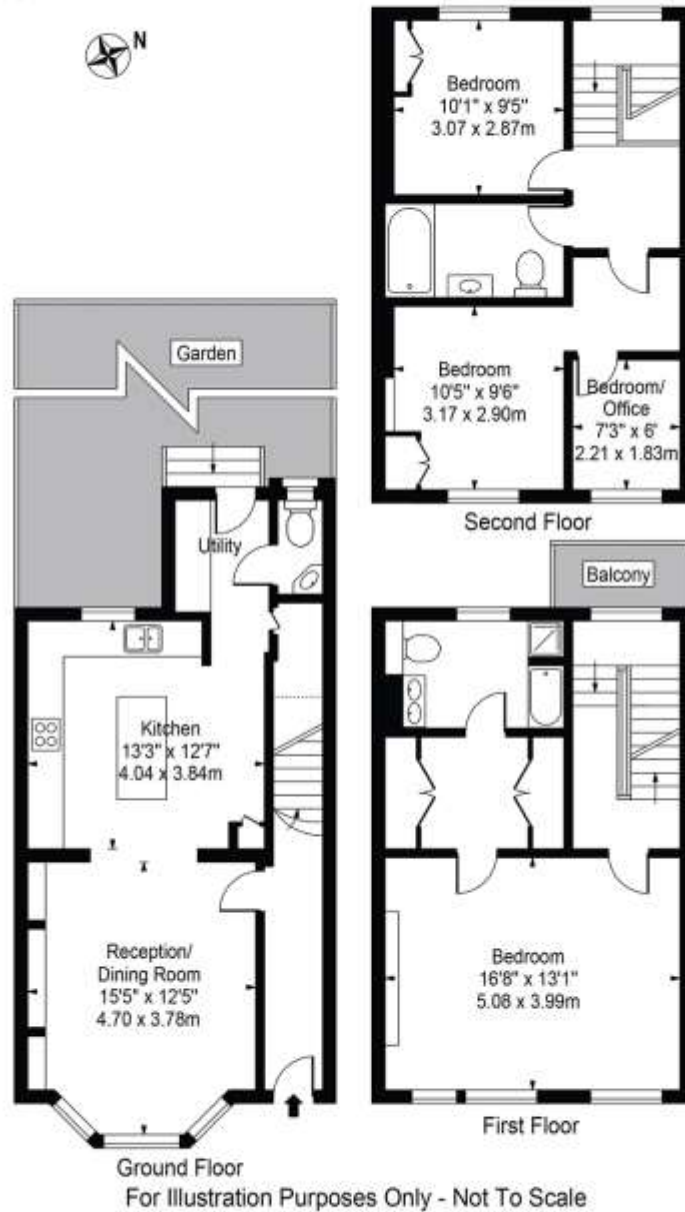


Winkworth

for every step...

Lloyd Baker Street

Approx. Gross Internal Area 1368 Sq Ft - 127.09 Sq M



This floor plan should be used as a general outline for guidance only and does not constitute in whole or in part an offer or contract. Any intending purchaser or lessee should satisfy themselves by inspection, searches, enquiries and full survey as to the correctness of each statement. Any areas, measurements or distances quoted are approximate and should not be used to value a property or be the basis of any sale or let.

This floorplan is for illustration purposes only and is not to scale. The position and size of doors, windows, appliances and other features are approximate.

Clerkenwell | 020 7405 1288 | clerkenwell@winkworth.co.uk

Winkworth

for every step...

winkworth.co.uk

Winkworth wishes to inform prospective buyers and tenants that these particulars are a guide and act as information only. All our details are given in good faith and believed to be correct at the time of printing but they don't form part of an offer or contract. No Winkworth employee has authority to make or give any representation or warranty in relation to this property. All fixtures and fittings, whether fitted or not are deemed removable by the vendor unless stated otherwise and room sizes are measured between internal wall surfaces, including furnishings.