



Ledbury Mansions, London, W11

£650 per week (£2,816.66 PCM) *Part Furnished*



A stunning and beautifully presented one bedroom apartment on the second floor of this corner building boasting fantastic ceiling light, wonderful light and dual aspect which refurbished to the highest of standards throughout.

KEY FEATURES

- 1 Bedroom
- 1 Reception Room
- 1 Bathroom
- Upper Floor without Lift
- Part Furnished



Notting Hill Lettings

0207 727 3227 | nottinghill@winkworth.co.uk

Winkworth

for every step...



The property comprises hallway leading into stunning living room with wood floors throughout, semi open plan fully integrated kitchen with marble work top, double bedroom with built in storage and immaculate bathroom with shower over bath. The property is in fantastic condition and offered either part furnished or unfurnished. Viewing highly recommended.

Please be aware no parking permits are available for this property.

Ledbury Road is a very popular street at the heart of Notting Hill running North from Westbourne Grove with many of the area's most fashionable boutiques, delis and restaurants a moment's walk away.

Utilities:

Electricity – Mains

Water – Mains

Sewerage – Mains

Heating – Gas

Broadband <https://checker.ofcom.org.uk/en-gb/broadband-coverage>

Mobile Coverage <https://checker.ofcom.org.uk/en-gb/mobile-coverage>

MATERIAL INFO

Deposit: £3,250

Holding Deposit: £650

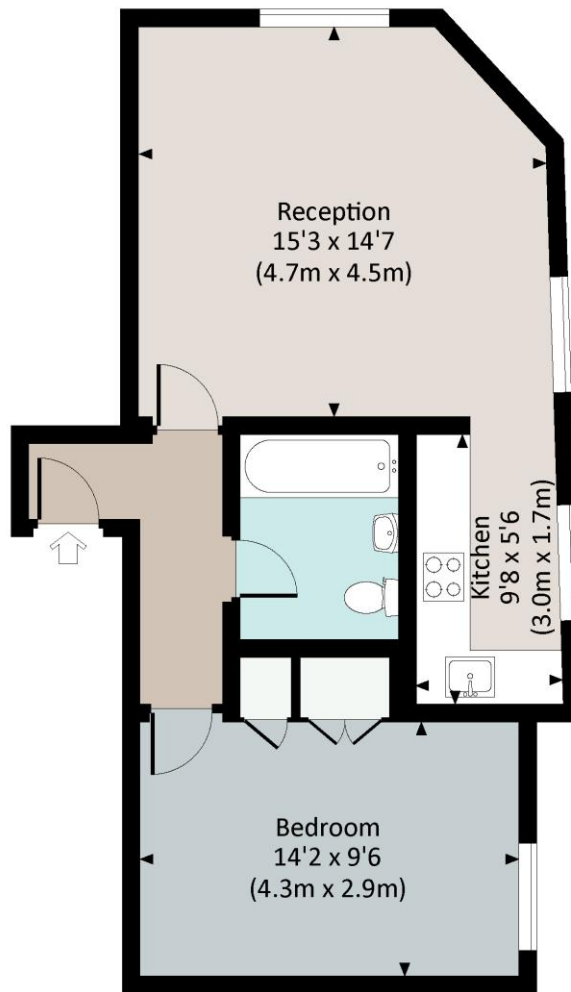
Council Tax Band: D (RBKC)





LEDBURY MANSIONS, LEDBURY ROAD, W11

Approx. gross internal area
539 Sq Ft. / 50.1 Sq M.

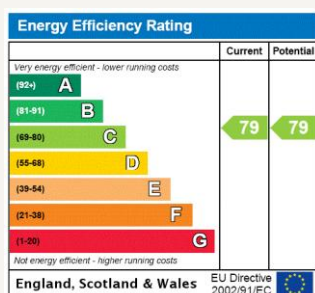


SECOND FLOOR



All measurements have been made in accordance with RICS Code of Measuring Practice which are approximate only and only for illustrative purposes. For the avoidance of doubt, Dowling Jones Design shall not be liable for any reliance on these measurements. © 2017 www.dowlingjones.com 020 7630 9933

For more information, scan the QR code or visit the link below



<https://www.winkworth.co.uk/rent/property/NHS170022>

Where no figures are shown, we have been unable to ascertain the information. All figures that are shown were correct at the time of printing.

Notting Hill Lettings

0207 727 3227 | nottinghill@winkworth.co.uk

Winkworth

for every step...

Winkworth wishes to inform prospective buyers and tenants that these particulars are a guide and act as information only. All our details are given in good faith and believed to be correct at the time of printing but they don't form part of an offer or contract. No Winkworth employee has authority to make or give any representation or warranty in relation to this property. All fixtures and fittings, whether fitted or not are deemed removable by the vendor unless stated otherwise and room sizes are measured between internal wall surfaces, including furnishings.