



34A, GLENWOOD ROAD, LONDON, SE6  
**GUIDE PRICE £375,000- £400,000 LEASEHOLD**

## TWO BEDROOM GARDEN FLAT

Forest Hill | | [foresthill@winkworth.co.uk](mailto:foresthill@winkworth.co.uk)





**DESCRIPTION:**

One Bedroom | Ground Floor | Private Garden | Open Plan Living | 597 Sq Ft / 55 Sqm | Period | Chain Free  
| Forest Hill / Catford

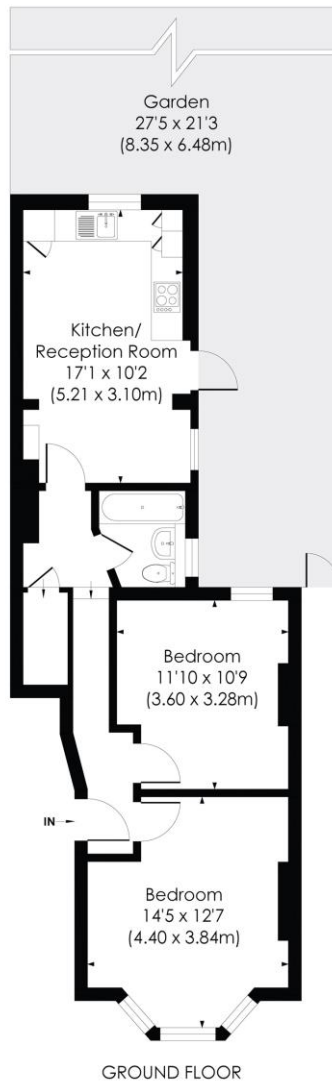




## GLENWOOD ROAD, SE6

Approx. Gross Internal Floor Area

**597 Sq. ft/55.42 Sq. m**



© Pixangle Property Marketing Ltd. info@pixangle.com Tel: 0208 870 2118

**pixangle**  
PROPERTY MARKETING

This floor plan has been prepared for the purpose of illustration only in accordance with the latest RICS code of measuring practice and is not to scale. All measurements and areas are approximate and whilst every effort has been made to ensure the accuracy of the plan contained here, no responsibility is taken for any error, omission or misstatement.

This floorplan is for illustration purposes only and is not to scale. The position and size of doors, windows, appliances and other features are approximate.

**Tenure:** Leasehold

Energy Efficiency Rating		
	Current	Potential
Very energy efficient - lower running costs		
A (91-100)		
B (81-90)		
C (69-80)		
D (55-68)	65	73
E (39-54)		
F (21-38)		
G (1-20)		
Not energy efficient - higher running costs		
England, Scotland & Wales EU Directive 2002/91/EC		