



FLAT 6, HAMLET HOUSE, LONDON ROAD, LONDON, SE23
£275,000 LEASEHOLD

Forest Hill | | foresthill@winkworth.co.uk



DESCRIPTION:

Situated in a purpose-built development, this well-presented One bedroom apartment offers comfortable living in a convenient location. The property benefits from residents parking and is ideally positioned for easy access to local shops, amenities, and public transport.

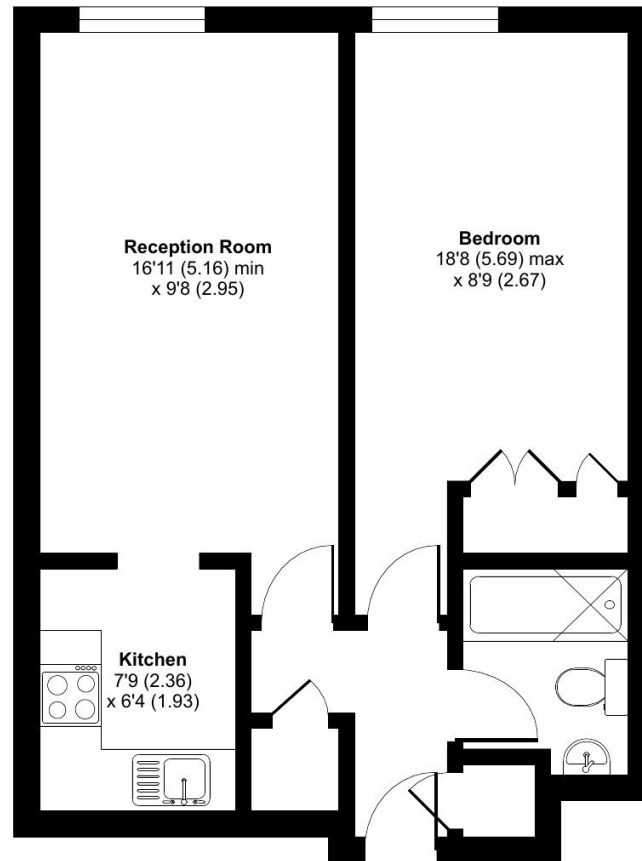




London Road, SE23

Approximate Area = 480 sq ft / 44.6 sq m

For identification only - Not to scale



SECOND FLOOR



Floor plan produced in accordance with RICS Property Measurement Standards incorporating International Property Measurement Standards (IPMS2 Residential). © nchecon 2025. Produced for Winkworth Forest Hill and New Cross. REF:1330155

This floorplan is for illustration purposes only and is not to scale. The position and size of doors, windows, appliances and other features are approximate.

Tenure: Leasehold

Score	Energy rating	Current	Potential
92+	A		
81-91	B		
69-80	C	80 C	84 B
55-68	D		
39-54	E		
21-38	F		
1-20	G		