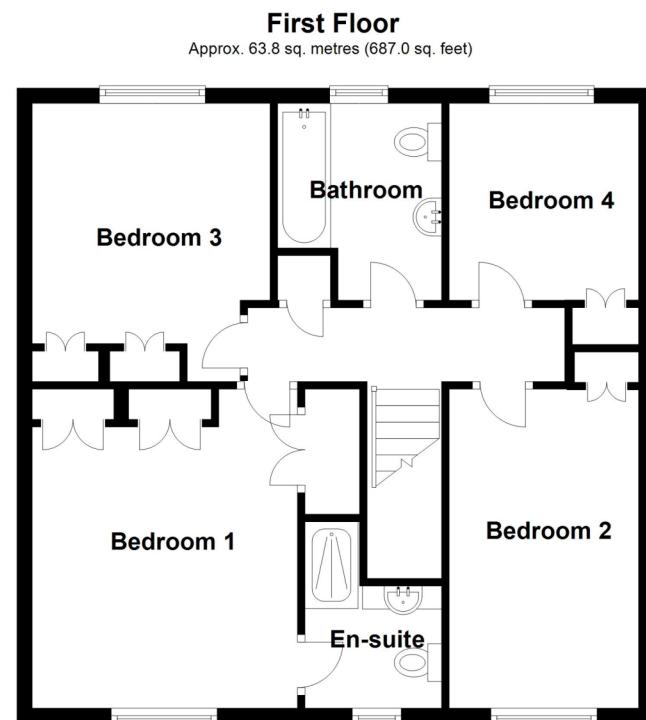
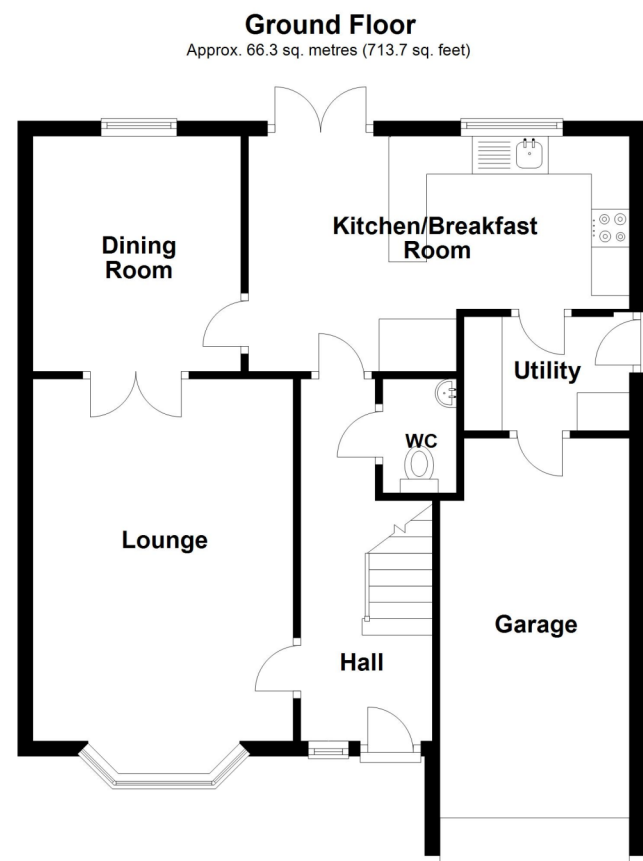


EPC TO FOLLOW



Total area: approx. 130.1 sq. metres (1400.7 sq. feet)



12 Sheldrake Road, Sleaford, Lincolnshire, NG34 7XF

£320,000 Freehold

Winkworth are pleased to offer for sale this well presented Four Bedroom Detached Family Home with a driveway offering parking for two cars and an integral garage. The accommodation comprises of Entrance Hall, Downstairs W/C, Lounge, Dining Room, Kitchen Breakfast Room, Utility Room Four well-proportioned Bedrooms, En-Suite Shower Room to Master and a Family Bathroom. The rear garden is non overlooked with a large paved patio area stepping down onto the lawn which is fenced to all aspects with a garden shed, outside tap, outside light and access via a side gate to the front of the property.

The property also features gas fired central heating and UPVC double glazing.

A viewing is highly recommended.

Well Presented Family Home | Four Double Bedrooms | Kitchen/Breakfast Room | Driveway & Garage | Gas Central Heating | UPVC Double Glazing | Non Overlooked | Popular Location | Enclosed Rear Garden



ACCOMMODATION

Entrance Hall

Downstairs Cloakroom

Lounge - 15'7" x 11'3" (4.75m x 3.43m)

Dining Room - 10'4" x 9' (3.15m x 2.74m)

Kitchen Breakfast Room - 16'5" x 10'4" (5m x 3.15m)

Utility Room - 7'11" x 6'5" (2.41m x 1.96m)

Bedroom One - 12'2" x 12'2" (3.7m x 3.7m)

En-Suite

Bedroom Two - 12'5" x 8'3" (3.78m x 2.51m)

Bedroom Three - 12' x 9'9" (3.66m x 2.97m)

Bedroom Four - 10'5" x 8'7" (3.18m x 2.62m)

Family Bathroom

LOCAL AUTHORITY

North Kesteven District Council

TENURE

Freehold

COUNCIL TAX BAND

D

