



Page Street, SW1P

£3,250 PER MONTH

FURNISHED

#### AT A GLANCE

- Three Double Bedrooms
- Separate Kitchen
- Furnished
- Council Tax Band: D

**Winkworth**

for every step...



Score	Energy rating	Current	Potential
92+	A		
81-91	B		
69-80	C	77 C	84 B
55-68	D		
39-54	E		
21-38	F		
1-20	G		

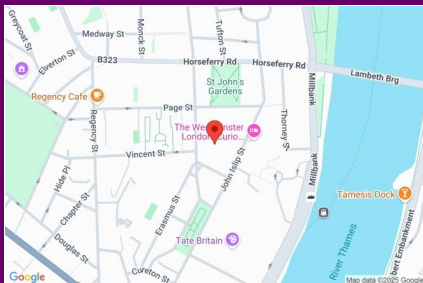
## PAGE STREET, SW1P

£3,250 PER MONTH

FURNISHED

Situated in the heart of Westminster, this bright and spacious three bedroom flat occupies the first floor of the well-maintained development on Page Street. The flat comprises three double bedrooms, a well-proportioned reception room, a separate fitted kitchen, and a contemporary family bathroom, plus a separate guest cloakroom. Large windows throughout the property ensure plenty of natural light.

Rogers House is a sought after residential building located moments from the green open spaces of St. James's Park and the River Thames. Excellent transport links are close by, including Westminster, Pimlico, and St James's Park Underground stations, providing easy access to the City, West End, and beyond.

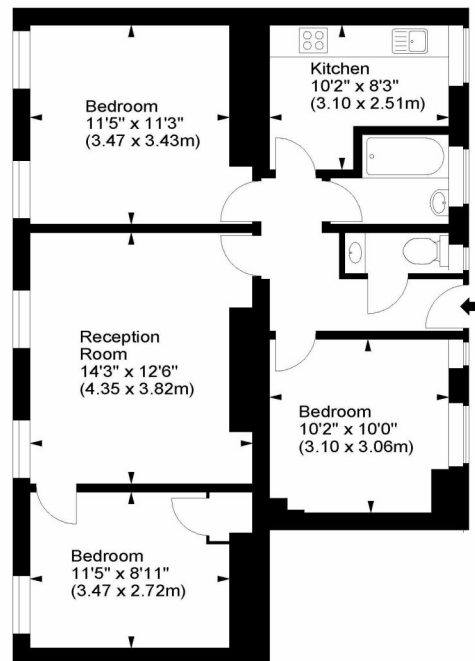


winkworth wishes to inform prospective buyers and tenants that these particulars are a guide and act as information only. All our details are given in good faith and believed to be correct at the time of printing but they don't form part of an offer or contract. No winkworth employee has authority to make or give any representation or warranty in relation to this property. All fixtures and fittings, whether fitted or not are deemed removable by the vendor unless stated otherwise and room sizes are measured between internal wall surfaces - including fireplaces.

## Rogers House, SW1



Approx. Gross Internal Area  
746 Sq Ft - 69.30 Sq M



Third Floor

For illustration purposes only. Not to scale.  
All measurements are taken and shown at floor level.  
www.r3photography.co.uk © Photography / Floor Plans / Lease Plans / EPCs



Pimlico & Westminster | 020 7828 1786 |  
pimlico@winkworth.co.uk

winkworth.co.uk/pimlico

# Winkworth

for every step...