

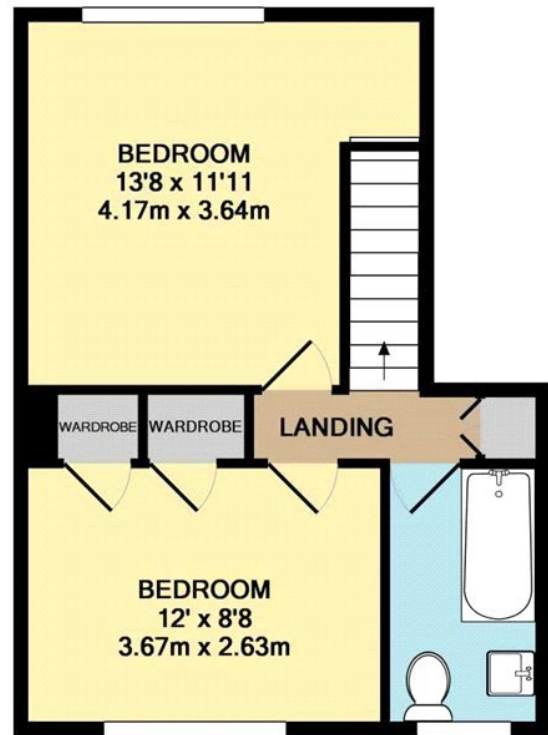
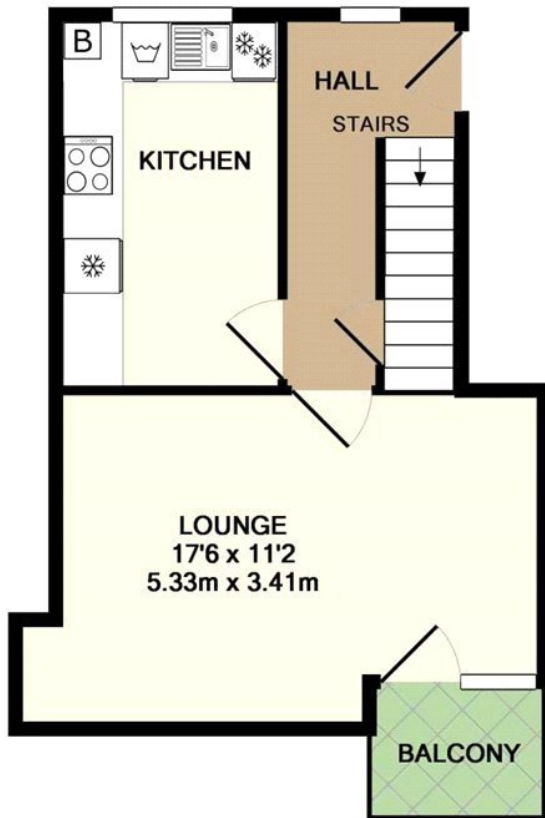


GRANVILLE PARK, SE13
£1,800 PER MONTH FURNISHED

DESCRIPTION:

A beautiful and good sized two double bedroom split level maisonette with a south facing balcony, a private section of garden situated in this fantastic location just off the Heath, close to Lewisham Station and DLR. Offered furnished and available from 22nd October 2025, your earliest viewing is highly advised.

Blackheath | 0208 8520999 | blackheath@winkworth.co.uk



TOTAL APPROX. FLOOR AREA 700 SQ.FT. (65.0 SQ.M.)

Whilst every attempt has been made to ensure the accuracy of the floor plan contained here, measurements of doors, windows, rooms and any other items are approximate and no responsibility is taken for any error, omission, or mis-statement. This plan is for illustrative purposes only and should be used as such by any prospective purchaser. The services, systems and appliances shown have not been tested and no guarantee as to their operability or efficiency can be given

Made with Metropix ©2014

This floorplan is for illustration purposes only and is not to scale. The position and size of doors, windows, appliances and other features are approximate.

Score	Energy rating	Current	Potential
92+	A		
81-91	B		
69-80	C		
55-68	D		
39-54	E		
21-38	F		
1-20	G		

Deposit: £2,076.92

Holding Deposit:

Council Tax Band:

Where no figures are shown, we have been unable to ascertain the information. All figures that are shown were correct at the time of printing.