



MALL CHAMBERS, W8
£520,000 LEASEHOLD

A WELL-PRESENTED TWO BEDROOM FLAT SITUATED ON THE LOWER GROUND FLOOR OF A SMALL VICTORIAN MANSION BLOCK WITH ACCESS TO A COMMUNAL GARDEN.

Kensington | 020 7727 1500 | kensington@winkworth.co.uk
 118 Kensington Church Street, Kensington, London, W8 4BH

Winkworth

for every step...

winkworth.co.uk



DESCRIPTION:

A well-presented two bedroom flat situated on the lower ground floor of a small Victorian mansion block with access to a communal garden. The flat has a reception room, separate kitchen, double bedroom and a single bedroom both of which have attractive views over the communal garden to the rear and are served by a modern shower room. The lawned communal garden is accessed via a gate next to the block entrance.

Mall Chambers is located on Kensington Mall and ideally located just off Notting Hill Gate with its many excellent shops, restaurants and transport facilities. The green open spaces of both Kensington Gardens and Holland Park are also within easy walking distance.

ACCOMMODATION:

Reception Room | Kitchen | Double Bedroom | Single Bedroom | Modern Shower Room | Communal Garden

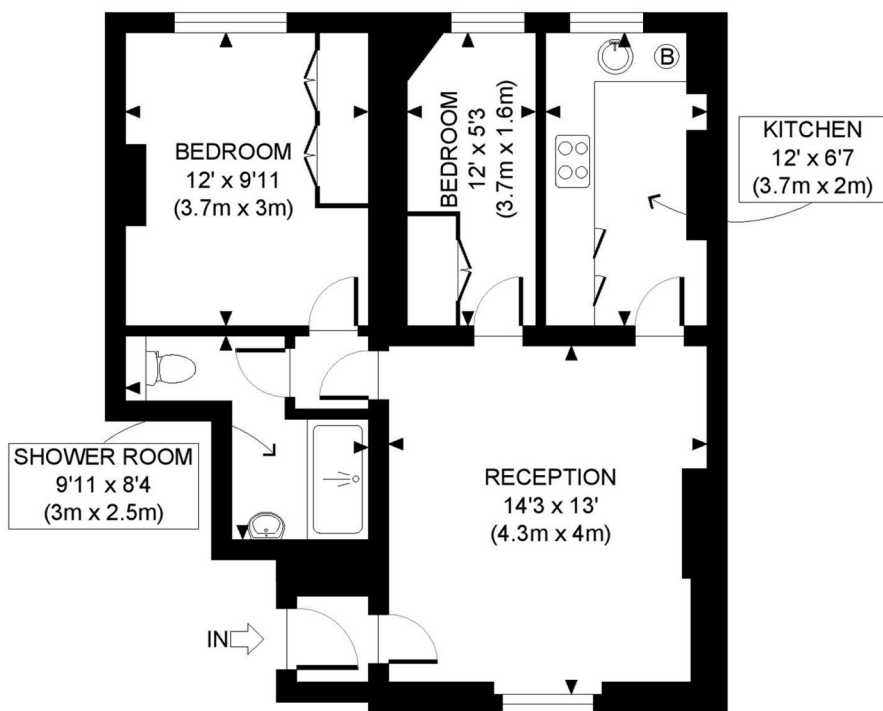
LOCAL AUTHORITY:

The Royal Borough of Kensington & Chelsea

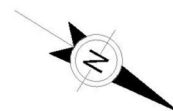
NEAREST PUBLIC TRANSPORT:

Notting Hill Gate (Central, Circle & District Lines)
Kensington Church Street (Circle & District Lines)





LOWER GROUND FLOOR
 GROSS INTERNAL
 FLOOR AREA 564 SQ FT



APPROX. GROSS INTERNAL FLOOR AREA: 564 SQ FT/ 52 SQM

Winkworth

This floorplan is for illustration purposes only and is not to scale. The position and size of doors, windows, appliances and other features are approximate.

Score	Energy rating	Current	Potential
92+	A		
81-91	B		
69-80	C		
55-68	D	69 C	78 C
39-54	E		
21-38	F		
1-20	G		

Lease: 999 years from 02.08.1897

Ground Rent: None

Service Charge: £2,640 per annum

Council tax band: E

Please note all figures are approximate

Winkworth

winkworth.co.uk

for every step...

Winkworth wishes to inform prospective buyers and tenants that these particulars are a guide and act as information only. All our details are given in good faith and believed to be correct at the time of printing but they don't form part of an offer or contract. No Winkworth employee has authority to make or give any representation or warranty in relation to this property. All fixtures and fittings, whether fitted or not are deemed removable by the vendor unless stated otherwise and room sizes are measured between internal wall surfaces, including furnishings.