



LONGLEY ROAD, LONDON, SW17
£375,000 LEASEHOLD

A WELL PRESENTED ONE DOUBLE BEDROOM FIRST FLOOR PERIOD CONVERSION FLAT.

Tooting | 020 8767 5221
17 Upper Tooting Road, London, SW17 7TS

Winkworth

for every step...

winkworth.co.uk





DESCRIPTION

A well presented one double bedroom first floor period conversion flat. The accommodation comprises a generous size living/dining room with a beautiful original fireplace, galley kitchen, family bathroom and a large double bedroom with views over the communal grounds. To the rear there is a large communal garden, mainly laid to lawn but offers plenty of space to enjoy and entertain.

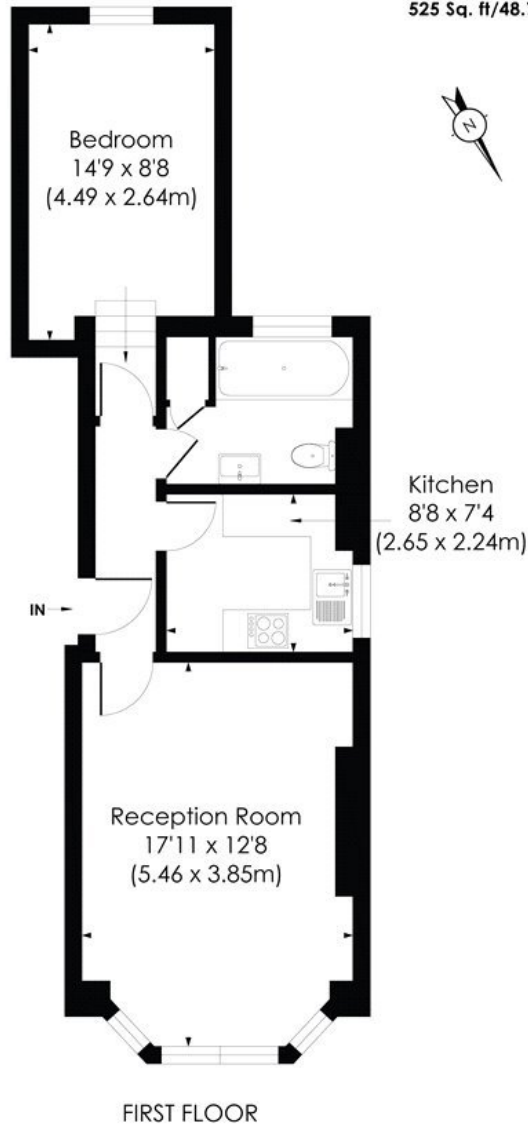
Longley Road is a popular residential address with easy access to Southern Rail services from Tooting station, good proximity to the amenities of Tooting Broadway, and Northern Line services there too.

Agent note 12/8/21 - The current lease is 84 years, our client has advised us that the flat will be sold with a new 125 year lease upon completion.

LONGLEY ROAD, SW17

Approx. Gross Internal Floor Area

525 Sq. ft/48.73 Sq. m



© Pixangle Property Marketing Ltd. info@pixangle.com Tel: 0208 870 2118

pixangle
PROPERTY MARKETING

This floor plan has been prepared for the purpose of illustration only in accordance with the latest RICS code of measuring practice and is not to scale. All measurements and areas are approximate and whilst every effort has been made to ensure the accuracy of the plan contained here, no responsibility is taken for any error, omission or misstatement.

This floorplan is for illustration purposes only and is not to scale. The position and size of doors, windows, appliances and other features are approximate.

Tooting | 020 8767 5221 | tooting@winkworth.co.uk
17 Upper Tooting Road, London, SW17 7TS

Winkworth

for every step...

winkworth.co.uk

Winkworth wishes to inform prospective buyers and tenants that these particulars are a guide and act as information only. All our details are given in good faith and believed to be correct at the time of printing but they don't form part of an offer or contract. No Winkworth employee has authority to make or give any representation or warranty in relation to this property. All fixtures and fittings, whether fitted or not are deemed removable by the vendor unless stated otherwise and room sizes are measured between internal wall surfaces, including furnishings.