



# St Georges Drive, SW1V

## £2,650 PER MONTH

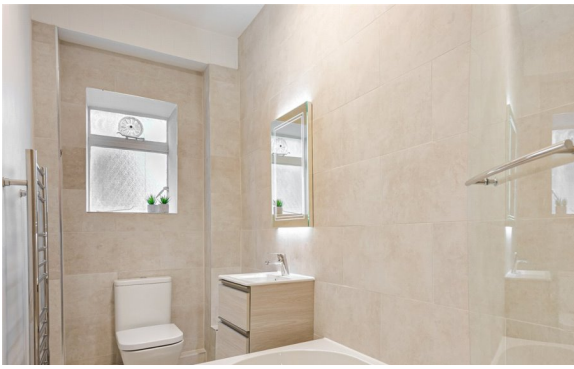
**FURNISHED**

### AT A GLANCE

- Large bedroom
- Integrated Kitchen
- High spec bathroom
- Good storage
- Newly decorated
- over 500 sq ft
- First floor

**Winkworth**

for every step...



Energy Efficiency Rating		
	Current	Potential
Very energy efficient - lower running costs		
(92+) <b>A</b>		
(81-91) <b>B</b>		
(69-80) <b>C</b>		
(55-68) <b>D</b>		
(39-54) <b>E</b>		
(21-38) <b>F</b>		
(1-20) <b>G</b>		
Not energy efficient - higher running costs		
England, Scotland & Wales	EU Directive 2002/91/EC	

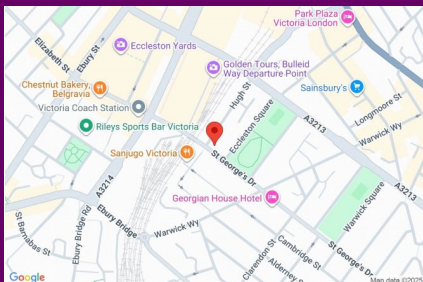
## ST GEORGES DRIVE, SW1V

£2,650 PER MONTH

FURNISHED

A stunning, light, and bright first floor flat on St George's Drive. The newly refurbished flat comprises of fully integrated, eat in kitchen, with washing machine, dishwasher and electric hob, a high spec, fully tiled bathroom with rainfall shower over bath, heated towel rail and under sink storage. On the other side of the hallway is a good sized, double bedroom with ample inbuilt storage and floor length windows that open out to the wrap around, private balcony and a large living room with double aspect, floor length windows that also provide access to the balcony. The flat further benefits from a deep cupboard in the hallway and another secure cupboard just outside the door of the property, across the communal hallway. The property is available immediately and on a fully furnished basis.

The flat is conveniently located on a one way street and is only a short stroll from Victoria Station and approximately only a five-minute walk to the sought after Elizabeth Street, Belgravia where there is an array of Restaurants, Cafe's, Boutique shops and beauty salons to choose from.

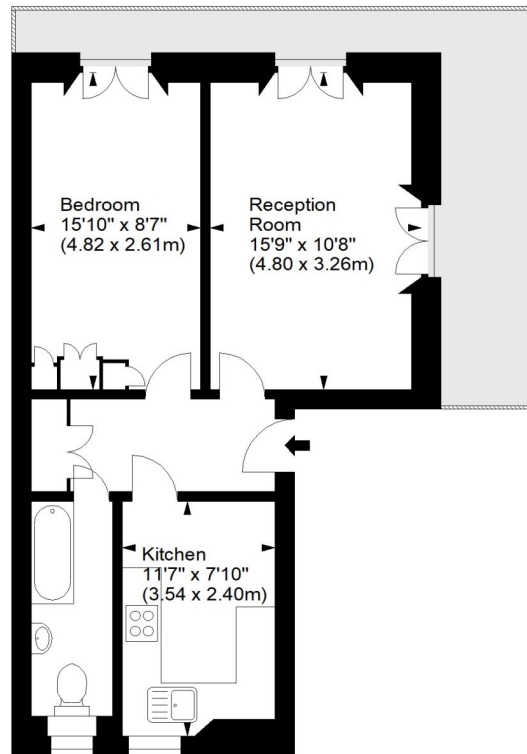


winkworth wishes to inform prospective buyers and tenants that these particulars are a guide and act as information only. All our details are given in good faith and believed to be correct at the time of printing but they don't form part of an offer or contract. No winkworth employee has authority to make or give any representation or warranty in relation to this property. All fixtures and fittings, whether fitted or not are deemed removable by the vendor unless stated otherwise and room sizes are measured between internal wall surfaces - including fireplaces.

## St. Georges Drive, SW1



Approx. Gross Internal Area  
502 Sq Ft - 46.64 Sq M



First Floor

For illustration purposes only. Not to scale.  
All measurements are taken and shown at floor level.  
www.r3photography.co.uk © Photography / Floor Plans / Lease Plans / EPCs



Pimlico & Westminster | 020 7828 1786 |  
pimlico@winkworth.co.uk

winkworth.co.uk/pimlico

# Winkworth

for every step...