



LADBROKE GROVE, LONDON, W10
£2,350 PER MONTH UNFURNISHED

Winkworth



LADBROKE GROVE, LONDON, W10

Newly Refurbished Two-Bedroom Apartment in the Heart of Ladbroke Grove, Notting Hill

This beautifully redeveloped apartment has undergone a complete and high-quality refurbishment, offering modern living in one of West London's most desirable areas.

Tastefully decorated to a high standard throughout, the property features:

A stunning open-plan kitchen and reception room

A stylish and contemporary bathroom

A spacious double bedroom

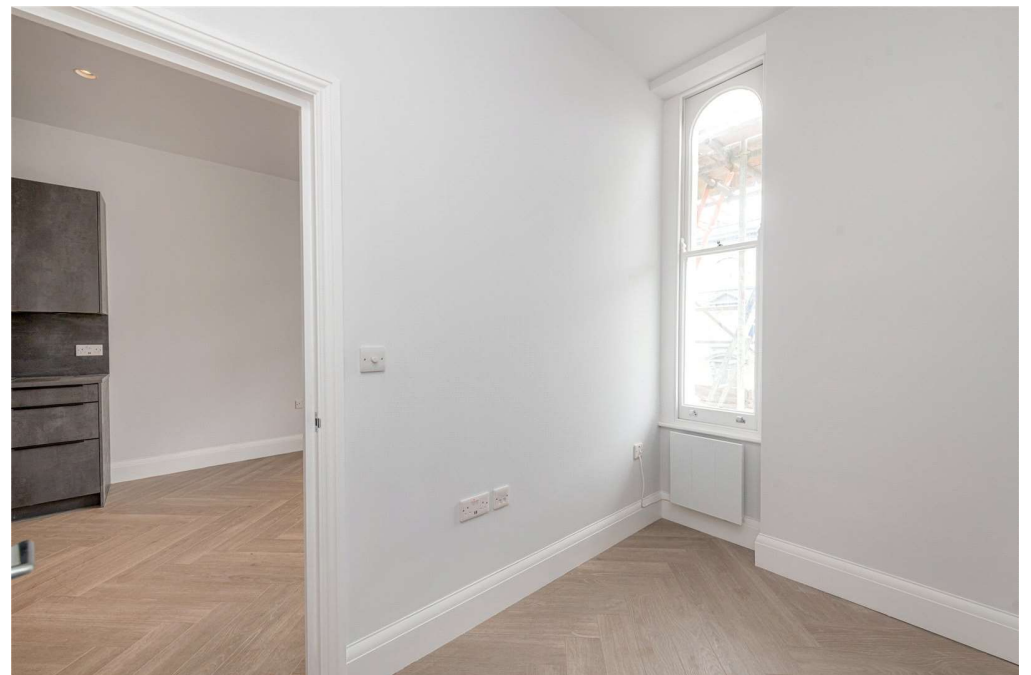
A second smaller room, ideal as a home office, dressing room, or utility space

Perfect for a single professional or a couple seeking a stylish home with excellent access to the vibrant culture and amenities of Notting Hill and Ladbroke Grove.



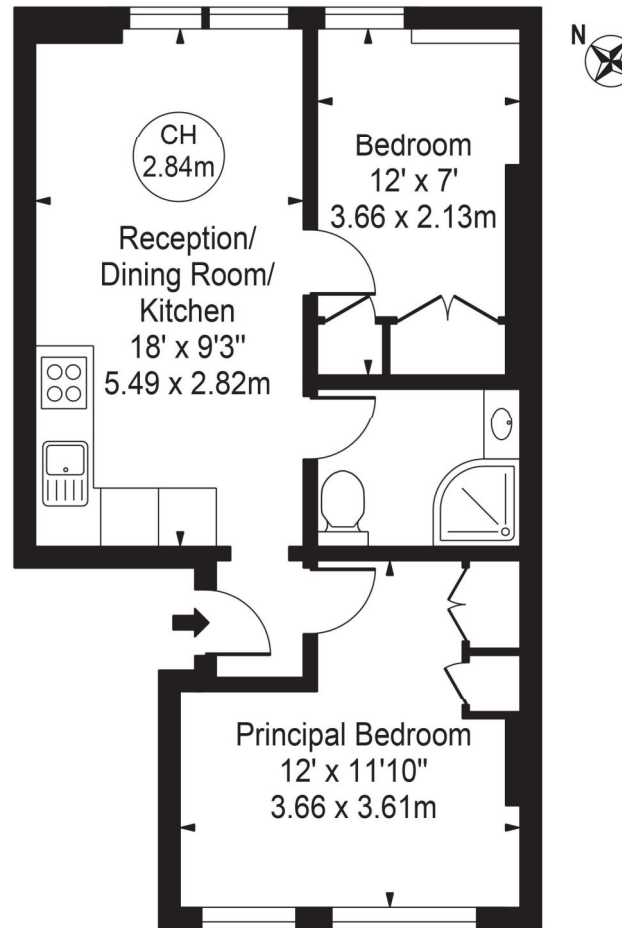
LOCATION

North Kensington's multicultural hotspot, Ladbroke Grove is a prime example of a modern urban living offering plenty of unique restaurants, coffee shops and antique furniture stores. Renowned Portobello market and transport links at Ladbroke Grove are a stone throw away.



Ladbroke Grove

Approx. Gross Internal Area 441 Sq Ft - 40.97 Sq M



Second Floor

For Illustration Purposes Only - Not To Scale

This floor plan should be used as a general outline for guidance only and does not constitute in whole or in part an offer or contract. Any intending purchaser or lessee should satisfy themselves by inspection, searches, enquiries and full survey as to the correctness of each statement. Any areas, measurements or distances quoted are approximate and should not be used to value a property or be the basis of any sale or let. Copyright Morriarti Photography & Design LTD

Score	Energy rating	Current	Potential
92+	A		
81-91	B		84 B
69-80	C	69 C	
55-68	D		
39-54	E		
21-38	F		
1-20	G		

North Kensington | 020 7792 5000 | northkensington@winkworth.co.uk

winkworth.co.uk

Winkworth wishes to inform prospective buyers and tenants that these particulars are a guide and act as information only. All our details are given in good faith and believed to be correct at the time of printing but they don't form part of an offer or contract. No Winkworth employee has authority to make or give any representation or warranty in relation to this property. All fixtures and fittings, whether fitted or not are deemed removable by the vendor unless stated otherwise and room sizes are measured between internal wall surfaces, including furnishings.

Winkworth