



Winkworth
for every step...



Winkworth
for every step...



Winkworth
for every step...

BROMEFIELD, STANMORE, HA7
£800,000 FREEHOLD

4 BEDROOM DETACHED HOUSE IN STANMORE

Kingsbury | 020 8204 0000 | kingsbury@winkworth.co.uk



for every step...

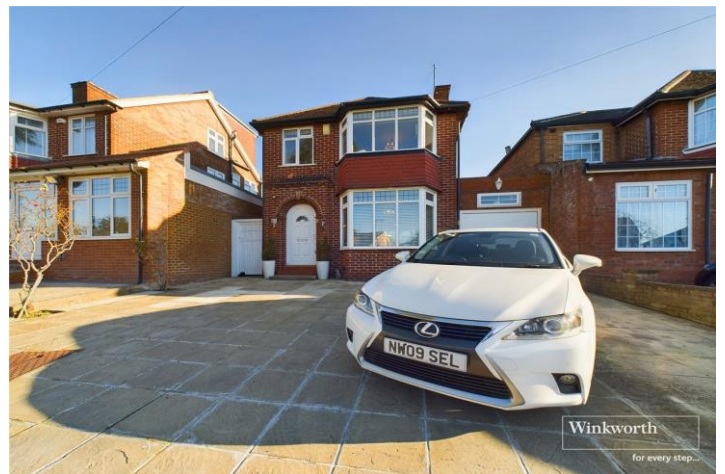
winkworth.co.uk



DESCRIPTION: Welcome to this exquisite FOUR BEDROOM LINK DETACHED HOUSE, in the serene and inviting Bromefield estate. Nestled in a peaceful residential enclave, this home presents a perfect blend of comfort and elegance. Upon entering, you'll be greeted by a NEUTRALLY DECORATED INTERIOR that exudes a sense of calm and sophistication. The ground floor boasts a luxurious bedroom with an ensuite, this thoughtful design ensures convenience and privacy for those who prefer one-level living. The heart of the home lies in the SPACIOUS LIVING ROOM, seamlessly connected to a dining area that overlooks the CHARMING GARDEN. The open layout creates a warm and inviting atmosphere. LARGE WINDOWS allow NATURAL LIGHT to flood the space, creating a bright and airy ambiance. The practical kitchen comes equipped with plenty of counter and storage space and is designed to meet your needs with efficiency. Ascending to the first floor, you'll find a lovely family bathroom and three GENEROUSLY SIZED ROOMS that can be adapted to suit your lifestyle. These versatile spaces can be transformed into additional bedrooms, or home offices, offering flexibility for your evolving needs. Venturing outside you will find the impressive, WELL-MAINTAINED GARDEN. The carefully landscaped surroundings provide a harmonious connection between indoor and outdoor living. Additionally, it falls within the CATCHMENT AREA of esteemed schools, including KENMORE PARK, PARK HIGH, CANONS HIGH, and AVANTI SCHOOLS, ensuring a top-notch education for the family. Further benefits include scope for further extension (STPP), OFF STREET PARKING, and the commuters can take advantage of the JUBILEE LINE, carrying you from the suburbs to the city in less than half an hour. An internal viewing is a must.

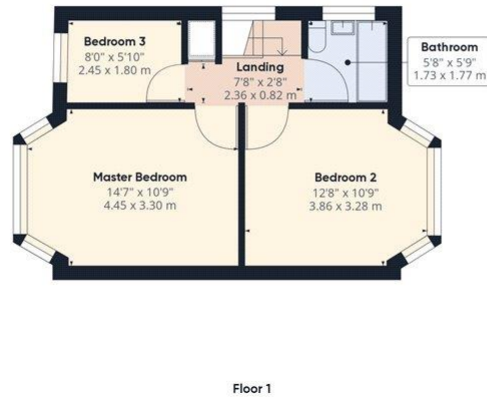
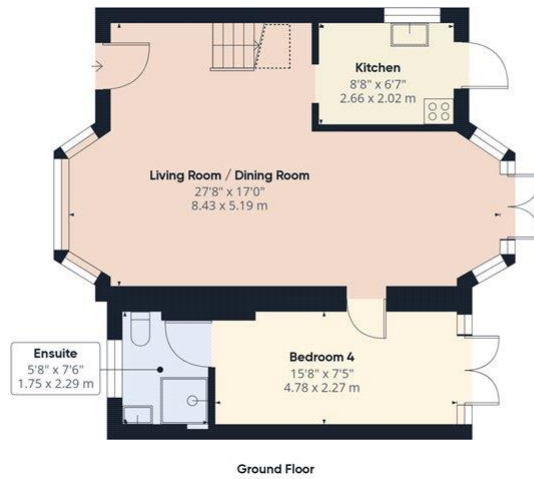


for every step...



Winkworth

for every step...



Approximate total area^{††}
 982.99 ft²
 91.32 m²

Reduced headroom
 10.23 ft²
 0.95 m²

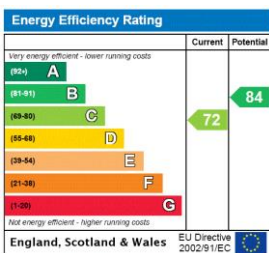
Excluding balconies and terraces

Reduced headroom
 (below 1.5m/4.92ft)

While every attempt has been made to ensure accuracy, all measurements are approximate, not to scale. This floor plan is for illustrative purposes only.

GIRAFFE 360

This floorplan is for illustration purposes only and is not to scale. The position and size of doors, windows, appliances and other features are approximate.



Kingsbury | 020 8204 0000 | kingsbury@winkworth.co.uk

for every step...

winkworth.co.uk

Winkworth wishes to inform prospective buyers and tenants that these particulars are a guide and act as information only. All our details are given in good faith and believed to be correct at the time of printing but they don't form part of an offer or contract. No Winkworth employee has authority to make or give any representation or warranty in relation to this property. All fixtures and fittings, whether fitted or not are deemed removable by the vendor unless stated otherwise and room sizes are measured between internal wall surfaces, including furnishings.