



**ROCOCCO HOUSE, PRINCELET STREET, SPITALFIELDS, LONDON, E1  
£3,011.67 PER MONTH FURNISHED**

**CHARACTERFUL SPITALFIELDS SUB-PENTHOUSE LOFT /  
WAREHOUSE APARTMENT WITH STUNNING VIEWS, MINUTES  
FROM LIVERPOOL ST AND ALDGATE EAST TUBE STATIONS**

Shoreditch | 020 7749 7650 | [shoreditch@winkworth.co.uk](mailto:shoreditch@winkworth.co.uk)

**Winkworth**

Tenant Fees Apply: Details of fees for tenant referencing, tenancy agreement admin fees and renewal fees are available on the Winkworth website and the link can be found with the displayed rent for the property. Tenants should ensure they are fully conversant with these upfront fees and other costs that are involved at the outset of the tenancy before making an offer to rent and your local Winkworth office will provide written details upon request.

[winkworth.co.uk](http://winkworth.co.uk)

See things differently





## DESCRIPTION:

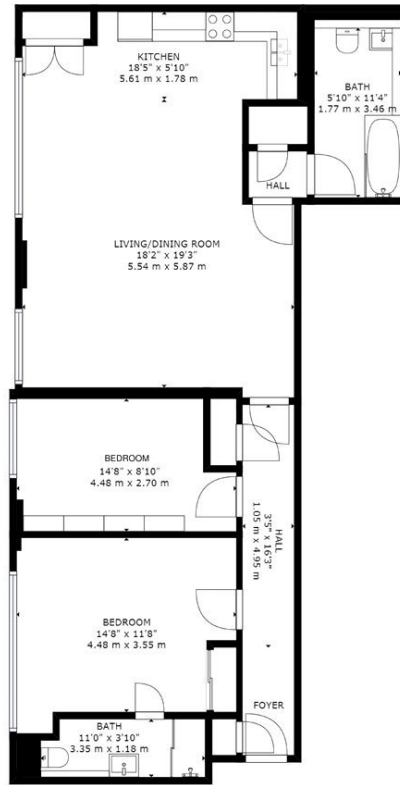
- Light filled south facing, recently converted 2 bedroom 2 bathroom 1880s loft warehouse apartment
- Expansive views of the iconic London city skyline including the Gherkin, Scalpel, Cheese Grater and Walkie Talkie buildings from all main rooms
- Exposed brick walls
- Wooden floors
- Massive open-out double glazed warehouse windows
- Huge living / kitchen / dining area
- Stylish fully equipped kitchen with white stone bench top and Bosch ceramic hob, oven, fridge freezer, microwave and washing machine/dryer appliances
- 2 large double bedrooms
- 2 bathrooms: one ensuite and one massive bathroom with over bath shower
- Stylishly furnished
- Artisanal coffee and restaurants on the doorstep eg Nude, St John, Poppies, Hawksmoor, Ottolenghi, Blanchette
- Moments' walk to Brick Lane, Spitalfields Market, Shoreditch, and the City
- Liverpool St tube (Central, Circle, Hammersmith and City, Metropolitan tube lines plus Overground) 10 minutes' walk away
- Aldgate East tube (Circle, District lines) 10 minutes' walk away
- Shoreditch Overground (Ginger Line) 5 minutes' walk away
- Lots of storage and cupboard space

**Winkworth**



**Winkworth**





GROSS INTERNAL AREA  
 : 1015 sq ft, 94 m<sup>2</sup>  
 TOTAL: 1015 sq ft, 94 m<sup>2</sup>  
 SIZES AND DIMENSIONS ARE APPROXIMATE, ACTUAL MAY VARY.



This floorplan is for illustration purposes only and is not to scale. The position and size of doors, windows, appliances and other features are approximate.

Shoreditch | 020 7749 7650 | shoreditch@winkworth.co.uk



winkworth.co.uk

See things differently

Winkworth wishes to inform prospective buyers and tenants that these particulars are a guide and act as information only. All our details are given in good faith and believed to be correct at the time of printing but they don't form part of an offer or contract. No Winkworth employee has authority to make or give any representation or warranty in relation to this property. All fixtures and fittings, whether fitted or not are deemed removable by the vendor unless stated otherwise and room sizes are measured between internal wall surfaces, including furnishings.