



SUTTON COURT ROAD, LONDON, W4
£275,000 LEASEHOLD

TWO BEDROOM GROUND FLOOR FLAT IN NEED OF MODERNISATION

Chiswick | 020 8994 7096 | chiswick@winkworth.co.uk

Winkworth

for every step...

winkworth.co.uk



DESCRIPTION:

Ground floor two bedroom apartment which requires updating. The property comprises a separate kitchen, reception leading onto a private balcony which overlooks the communal gardens. The property further benefits a external storage cupboard. Egerton House is situated off Sutton Court Road south of Chiswick High Road within easy reach of the local shops and restaurants of Fauconberg Road and Chiswick High Road and is also close to the open spaces of Chiswick House and Grounds and the River Thames. Chiswick Train Station is a short distance away.

ACCOMMODATION

Two bedrooms
In need of updating
Ground floor
Balcony
Separate kitchen
Outer storage unit
Great project



Egerton House

Approximate Gross Internal Area = 62 sq m / 667 sq ft

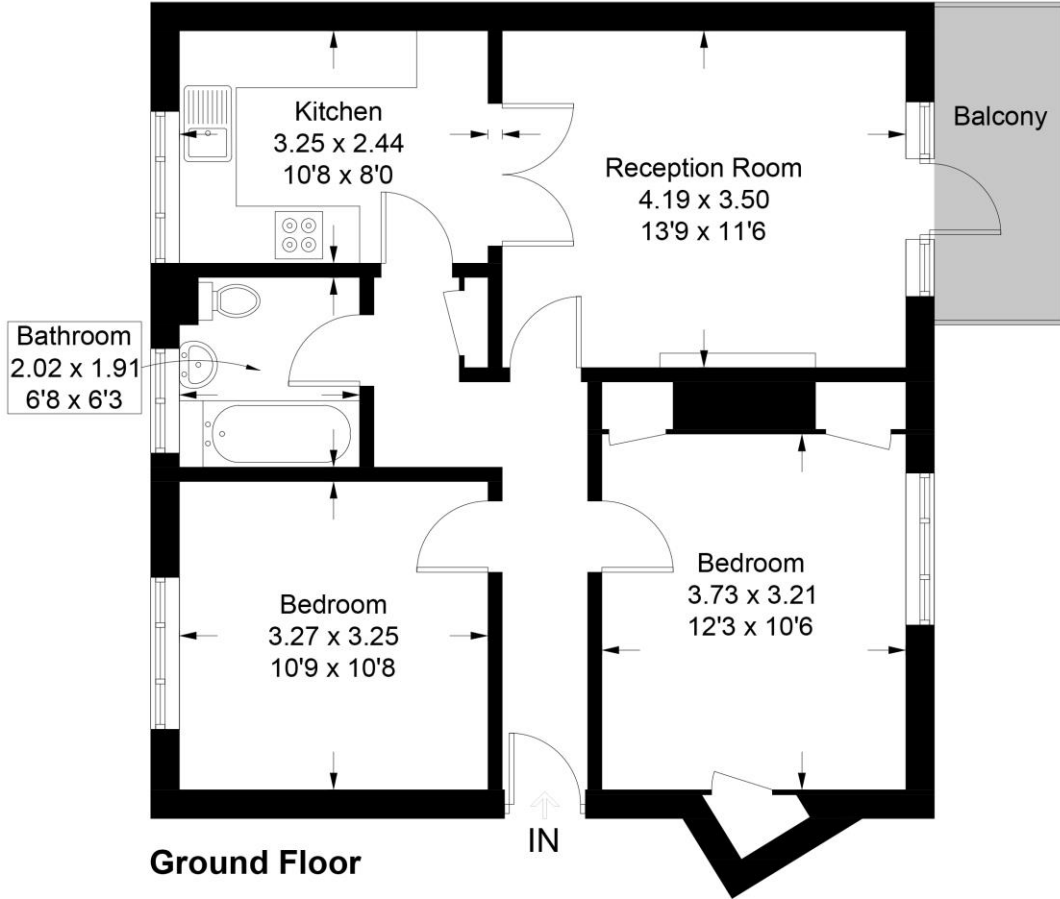
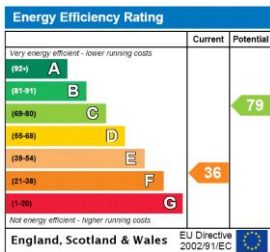


Illustration for identification purposes only, measurements are approximate, not to scale. floorplansUsketch.com © (ID791604)

This floorplan is for illustration purposes only and is not to scale. The position and size of doors, windows, appliances and other features are approximate.



Chiswick | 020 8994 7096 | chiswick@winkworth.co.uk



for every step...

winkworth.co.uk

Winkworth wishes to inform prospective buyers and tenants that these particulars are a guide and act as information only. All our details are given in good faith and believed to be correct at the time of printing but they don't form part of an offer or contract. No Winkworth employee has authority to make or give any representation or warranty in relation to this property. All fixtures and fittings, whether fitted or not are deemed removable by the vendor unless stated otherwise and room sizes are measured between internal wall surfaces, including furnishings.