



WEST BARNES LANE, SW20  
**£130,000 LEASEHOLD**

**Winkworth**



## WEST BARNES LANE, SW20

**Shared Ownership - 40% share subject to qualification through Notting Hill Genesis. £513.02 per calendar month rent for the rental on 60% share.**

A stunning one bedroom apartment on the fourth floor of this purpose built modern development located in the heart of Raynes Park.

The property comprises of entrance hall, open plan reception / kitchen, double bedroom with built in wardrobes and a 3 piece family bathroom. Further benefits include, Southerly facing private balcony and electric central heating.

Raynes Park has a plethora of boutique shops, cafes, eateries and a Waitrose supermarket. The train station (South Western trains) gives you direct access to The City and West End within 30 minutes. Nearby Wimbledon Common is a popular area for recreation, relaxation and a perfect place for spotting wildlife and birds.

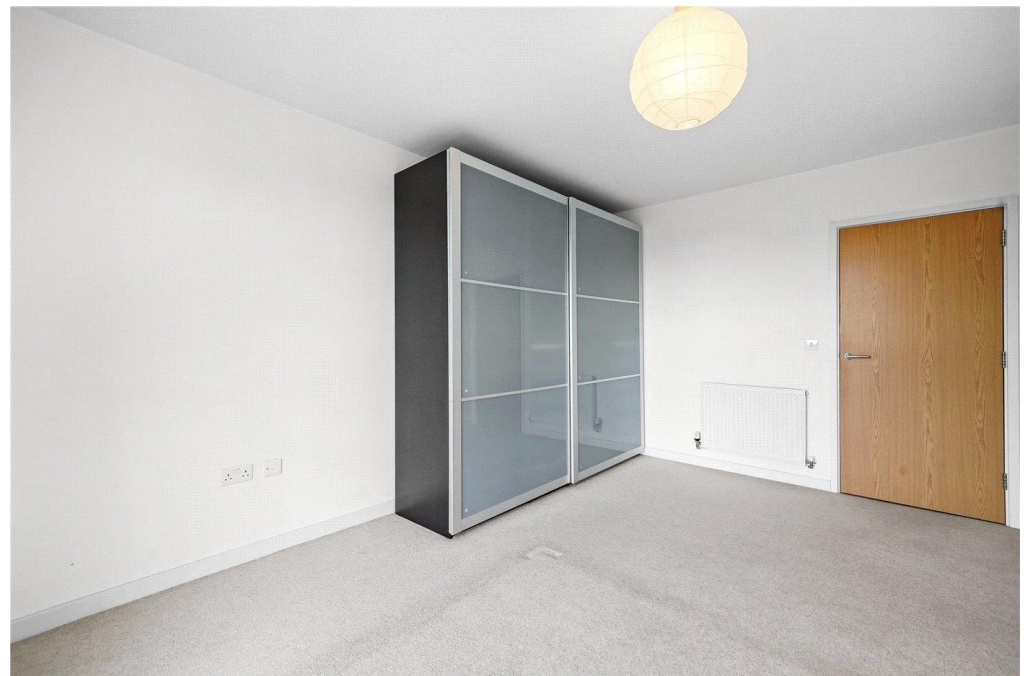


EPC rating C

Council tax band C

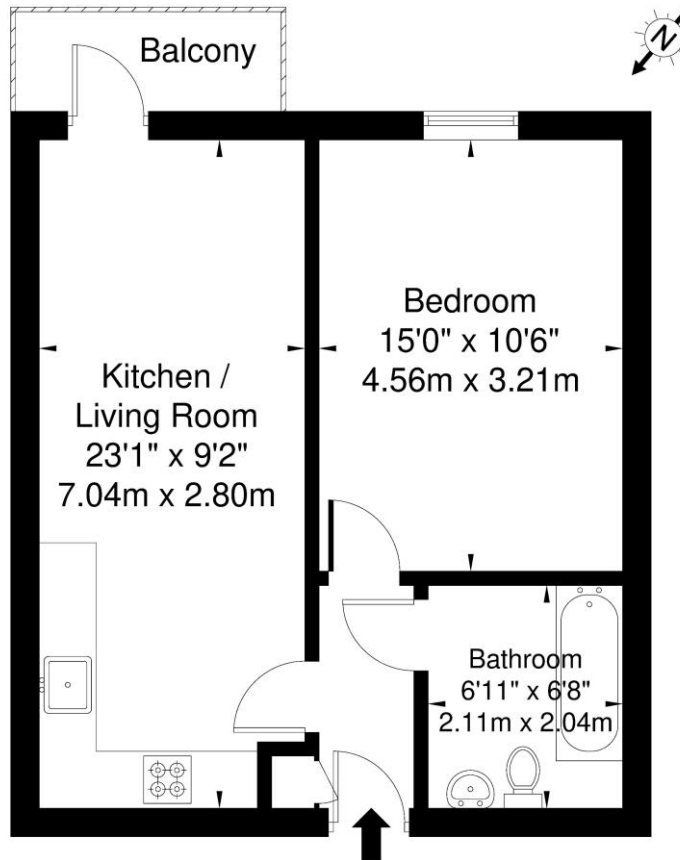
Service Charge Approx £1836 per year

Ground Rent included in service charge



# Dowding House West Barnes Lane SW20 0BN

Approx. Gross Internal Area = 43.3 sq m / 466 sq ft



Fourth Floor

Ref

Copyright **BLEU PLAN**

The Floor plan is not to scale and measurements and areas shown are approximate and therefore should be used for illustrative purposes only. The plan has been prepared in accordance with the RICS code of Measuring Practice and whilst we have confidence in the information produced it must not be relied on. If there is any aspect of particular importance, you should carry out or commission your own inspection of the property.  
Copyright @ BLEUPLAN

Energy Efficiency Rating		Current	Potential
Very energy efficient - lower running costs			
(92-100) <b>A</b>			
(81-91) <b>B</b>			
(69-80) <b>C</b>		80	80
(55-68) <b>D</b>			
(39-54) <b>E</b>			
(21-38) <b>F</b>			
(1-20) <b>G</b>			
Not energy efficient - higher running costs			
England, Scotland & Wales		EU Directive 2002/91/EC	

Wimbledon | 02037614040 | wimbledon@winkworth.co.uk

winkworth.co.uk

Winkworth wishes to inform prospective buyers and tenants that these particulars are a guide and act as information only. All our details are given in good faith and believed to be correct at the time of printing but they don't form part of an offer or contract. No Winkworth employee has authority to make or give any representation or warranty in relation to this property. All fixtures and fittings, whether fitted or not are deemed removable by the vendor unless stated otherwise and room sizes are measured between internal wall surfaces, including furnishings.

