



Elgin Avenue, London, W9

£550,000 *Leasehold*



Winkworth has the pleasure in offering a large (Approx. 636 Sq. Ft.) raised ground floor one bedroom apartment in excellent condition forming part of an attractive converted red brick period house located in the heart of this sought after area. The apartment has been designed to create a large reception area with high ceilings, floor to ceiling sash windows offering a wealth of natural light, a large kitchen Breakfast room, bathroom and a double bedroom with a built-in wardrobe. Elgin Avenue is situated close to all the local amenities offered by this fashionable area including boutique shops cafes on Lauderdale Road, Paddington Recreation Ground (0.1 miles) and the underground (0.3 miles) at Maida Vale (Bakerloo line).

Images have been virtually staged using CGI and are for illustrative purposes only. They are intended to convey the concept and vision for the property. They are for guidance only, and may alter and do not necessarily represent a true and accurate depiction of the finished property.



Winkworth Maida Vale

020 7289 1692 | maidavale@winkworth.co.uk

Winkworth

for every step...



KEY FEATURES

- Primary Double Bedroom
- Reception Room
- Family Bathroom
- Kitchen
- Leasehold



MATERIAL INFO

Tenure: Leasehold

Term: 107 year and 6 months

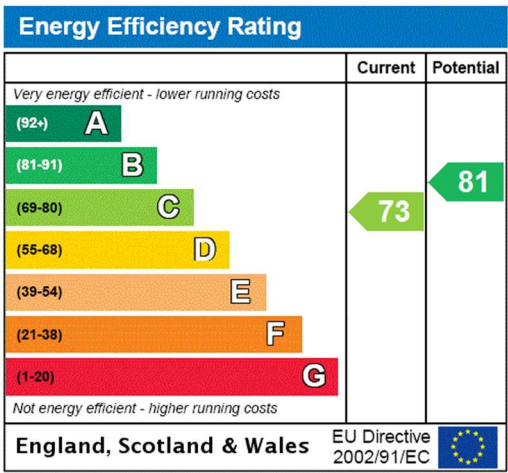
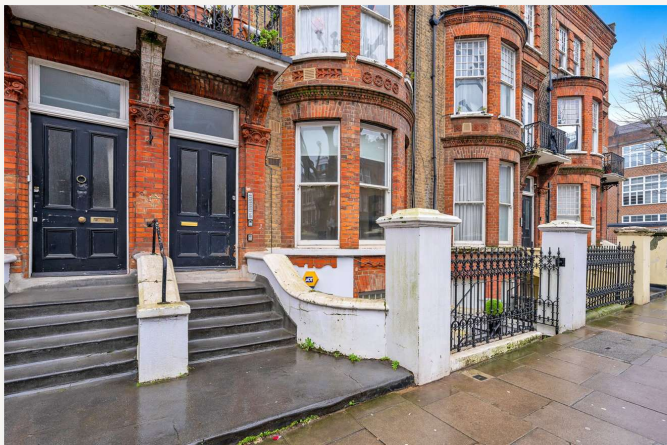
Service Charge: £1,720.56 per annum

Ground Rent: £100 Annually (subject to increase)

Council Tax Band: D

EPC rating: C





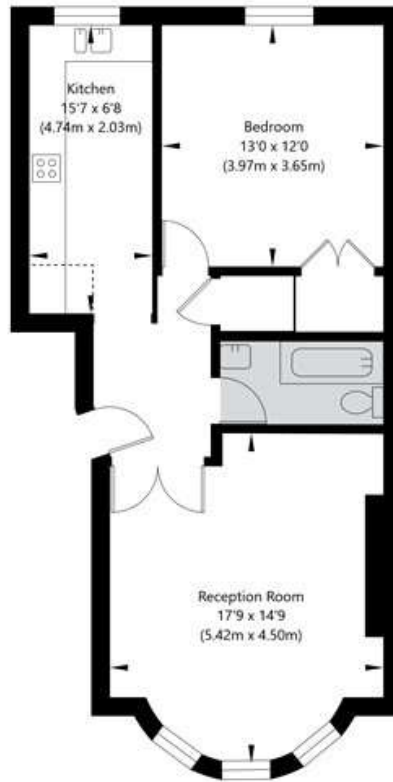
For more information, scan the QR code or visit the link below



<https://www.winkworth.co.uk/sale/property/MDV250008>

Elgin Avenue, Maida Vale, London, W9 2NR

Raised Ground Floor
GROSS INTERNAL FLOOR AREA
APPROX. 59.05 SQ M / 636 SQ FT
CEILING HEIGHT 3.20 M / 10.5 FT



APPROXIMATE GROSS INTERNAL FLOOR AREA 59.05 SQ M / 636 SQ FT
THIS FLOOR PLAN IS FOR ILLUSTRATIVE PURPOSES ONLY AND
SHOULD BE USED FOR THIS PURPOSE BY PROSPECTIVE APPLICANTS AS ITS NOT TO SCALE.

(c) AMBERSHORE PIX LIMITED / PHOTO - VIDEO - FLOOR PLANS / 0800 999 1577 / WWW.AMBERSHOREPIX.CO.UK

Where no figures are shown, we have been unable to ascertain the information. All figures that are shown were correct at the time of printing.

Winkworth Maida Vale

020 7289 1692 | maidavale@winkworth.co.uk

Winkworth

for every step...

Winkworth wishes to inform prospective buyers and tenants that these particulars are a guide and act as information only. All our details are given in good faith and believed to be correct at the time of printing but they don't form part of an offer or contract. No Winkworth employee has authority to make or give any representation or warranty in relation to this property. All fixtures and fittings, whether fitted or not are deemed removable by the vendor unless stated otherwise and room sizes are measured between internal wall surfaces, including furnishings.