



## Langdale Gardens, Earley, RG6 5TU

£1,250 per month *Unfurnished*



Two bedroom first floor apartment located close to local amenities and Earley train station. The property comprises living room, separate kitchen, two double bedrooms and a three piece bathroom. Residents on street parking available. Available now. Unfurnished.

### KEY FEATURES

- Two bedroom apartment
- First floor (no lift)
- On road residents parking
- Council tax band B
- Available now
- Unfurnished



Reading

0118 4022 300 | [reading@winkworth.co.uk](mailto:reading@winkworth.co.uk)

**Winkworth**

for every step...



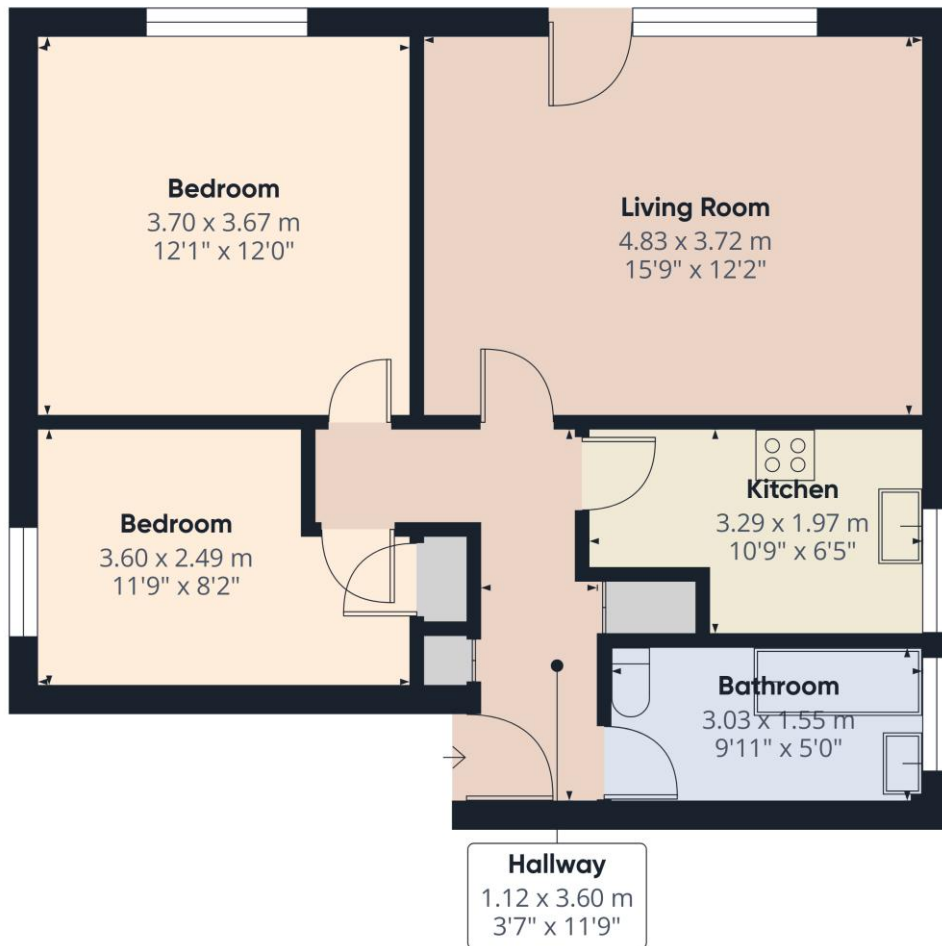






## MATERIAL INFO

**Deposit:** £1,442.31  
**Holding Deposit:** £288.46  
**Council Tax Band:** B  
**EPC rating:** D



Approximate total area<sup>(1)</sup>  
57.4 m<sup>2</sup>  
618 ft<sup>2</sup>

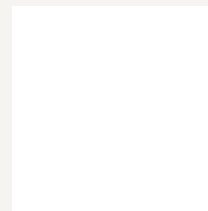
(1) Excluding balconies and terraces

Calculations reference the RICS IPMS 3C standard. Measurements are approximate and not to scale. This floor plan is intended for illustration only.

GIRAFFE360

Score	Energy rating	Current	Potential
92+	A		
81-91	B		
69-80	C		81 B
55-68	D	55 D	
39-54	E		
21-38	F		
1-20	G		

For more information, scan the QR code or visit the link below



<https://www.winkworth.co.uk/rent/property/REA250875>

Where no figures are shown, we have been unable to ascertain the information. All figures that are shown were correct at the time of printing.

Reading

0118 4022 300 | [reading@winkworth.co.uk](mailto:reading@winkworth.co.uk)

Winkworth

for every step...

Winkworth wishes to inform prospective buyers and tenants that these particulars are a guide and act as information only. All our details are given in good faith and believed to be correct at the time of printing but they don't form part of an offer or contract. No Winkworth employee has authority to make or give any representation or warranty in relation to this property. All fixtures and fittings, whether fitted or not are deemed removable by the vendor unless stated otherwise and room sizes are measured between internal wall surfaces, including furnishings.