



## Langdale Gardens, Earley, Reading, Berkshire, RG6

£1,250 per month *Unfurnished*



Two bedroom first floor apartment located in Earley. Available 10th November.

Two bedroom first floor apartment located close to local amenities and Earley train station. The property comprises living room, separate kitchen, two double bedrooms and a three piece bathroom. Residents on street parking available. Available 10th November 2025. Unfurnished.

### KEY FEATURES

- Two bedroom apartment
- First floor (no lift)
- On road residents parking
- Council tax band B
- Available 10th November
- Unfurnished



### Reading

0118 4022 300 | [reading@winkworth.co.uk](mailto:reading@winkworth.co.uk)









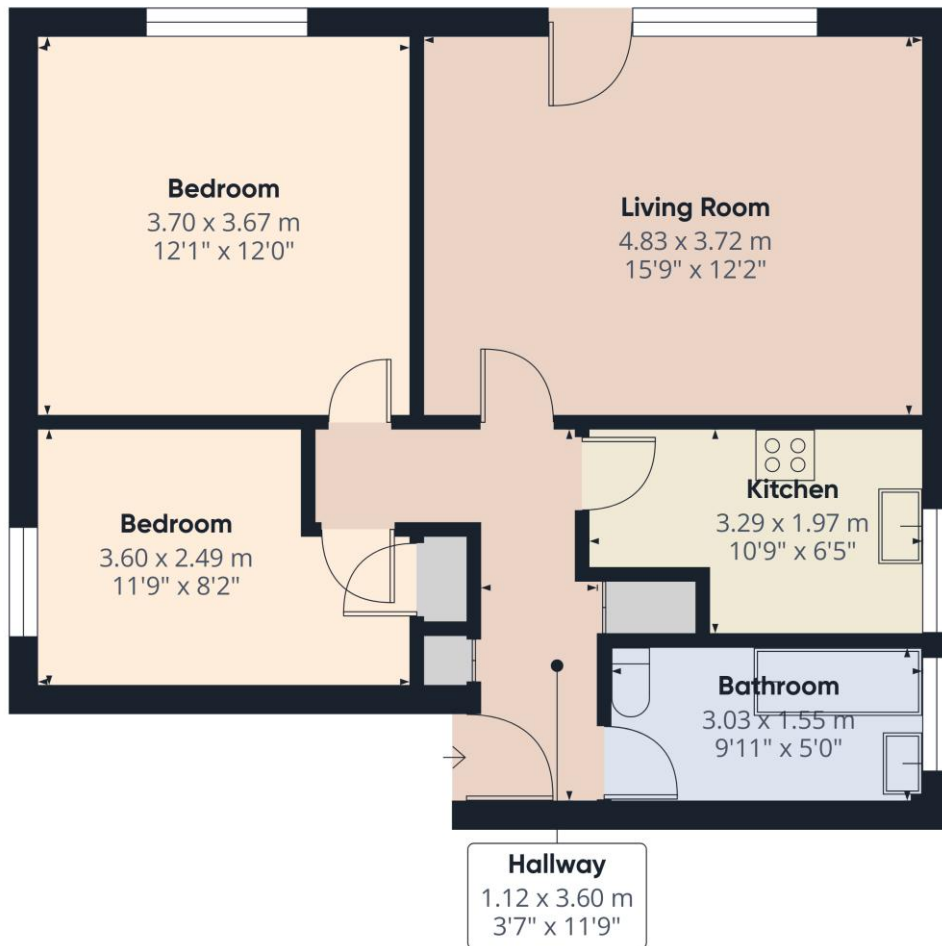
#### MATERIAL INFO

**Deposit:** £1,442.31

**Holding Deposit:** £288.46

**Council Tax Band:** B

**EPC rating:** D



Approximate total area<sup>(1)</sup>  
57.4 m<sup>2</sup>  
618 ft<sup>2</sup>

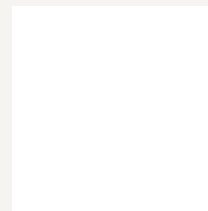
(1) Excluding balconies and terraces

Calculations reference the RICS IPMS 3C standard. Measurements are approximate and not to scale. This floor plan is intended for illustration only.

GIRAFFE360

Score	Energy rating	Current	Potential
92+	A		
81-91	B		
69-80	C		81 B
55-68	D	55 D	
39-54	E		
21-38	F		
1-20	G		

For more information, scan the QR code or visit the link below



<https://www.winkworth.co.uk/rent/property/REA250875>

Where no figures are shown, we have been unable to ascertain the information. All figures that are shown were correct at the time of printing.

## Reading

0118 4022 300 | [reading@winkworth.co.uk](mailto:reading@winkworth.co.uk)