



STATION ROAD, BOREHAMWOOD, HERTFORDSHIRE, WD6

£310,000 LEASEHOLD

CHAIN FREE TWO DOUBLE BEDROOM APARTMENT

Borehamwood | 020 8953 8899 | borehamwood@winkworth.co.uk



DESCRIPTION:

This spacious two double bedroom two bathroom 3rd floor apartment set in a purpose built development within easy access to the station and local amenities. This property benefits from a spacious reception with balcony, fitted kitchen, two double bedrooms with ensuite w/c and shower to master bedroom, main bathroom and secure underground parking. Available on a chain free basis. Ideal purchase for first time buyers and investors alike.

AT A GLANCE

- Two Double Bedrooms
- Chain Free
- 107 Year Lease
- Allocated Parking Space
- Two Bathrooms
- Balcony





25 Odette Court

Approximate Gross Internal Area = 67.4 sq m / 725 sq ft

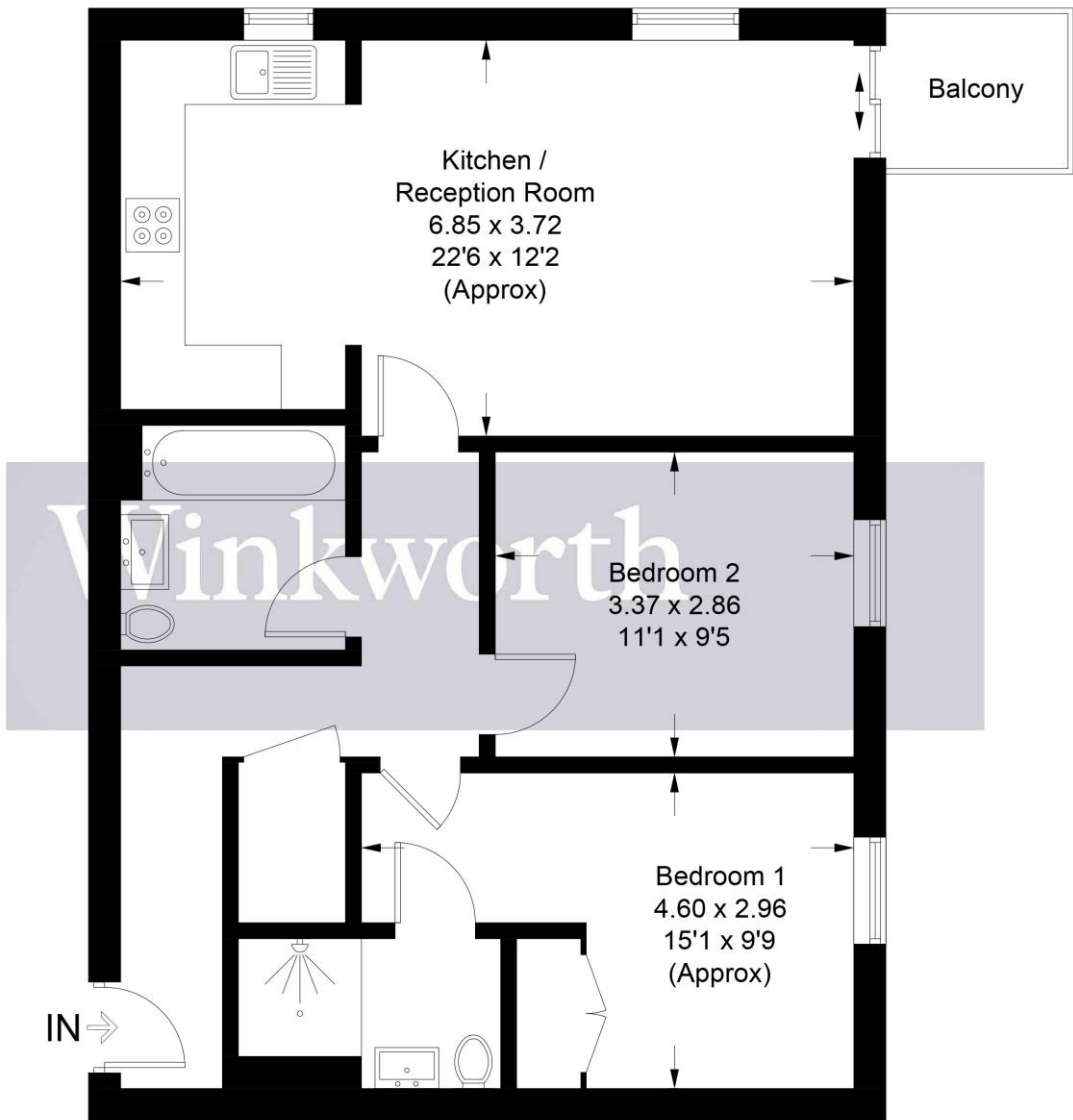


Illustration for identification purposes only, measurements are approximate, not to scale. Winkworth © 2025 (ID1192060)

This floorplan is for illustration purposes only and is not to scale. The position and size of doors, windows, appliances and other features are approximate.

Score	Energy rating	Current	Potential
92+	A		
81-91	B		
69-80	C		
55-68	D		
39-54	E		
21-38	F		
1-20	G		

Tenure: Leasehold

Term: 106 year and 8 months

Service Charge: £2760 per annum

Ground Rent: £ 100 Annually (subject to increase)

Council Tax Band: D

Where no figures are shown, we have been unable to ascertain the information. All figures that are shown were correct at the time of printing.