



Winkworth

Woodside Grange Road, London,
N12 £475,000 *Leasehold*



Winkworth are proud to offer this well presented, newly refurbished and spacious two bedroom ground floor apartment, set within a popular purpose built block, on Woodside Grange Road.

The property benefits from having en-suite to master bedroom, off street parking, and is situated 0.3 miles from Woodside Park tube station.

An internal viewing is highly recommended.

KEY FEATURES

- Newly refurbished
- Off street parking
- Gas central heating
- Double glazing
- En-suite to master bedroom
- Woodside Park tube station



Winkworth



Winkworth

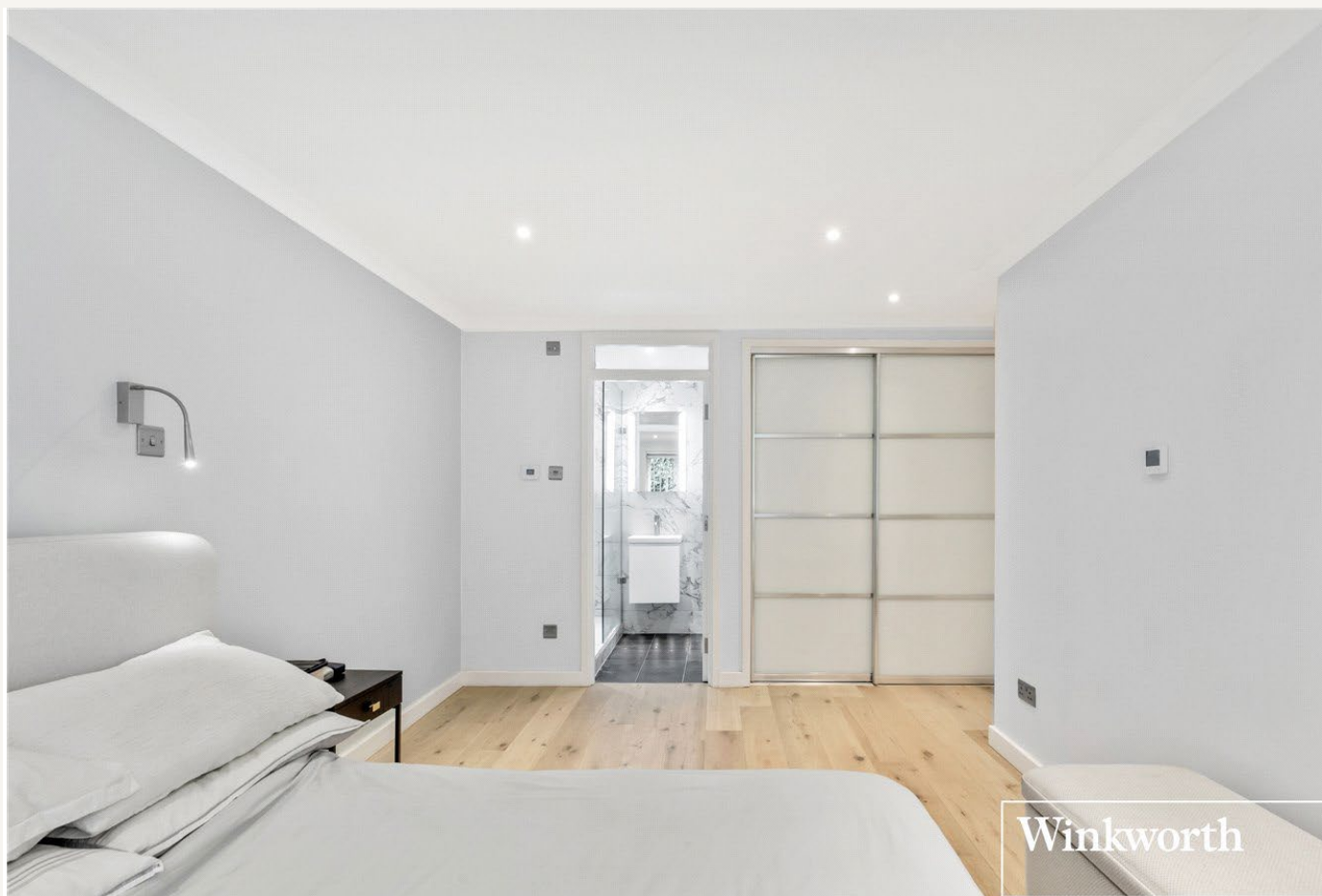
Finchley

020 8349 3388 | finchley@winkworth.co.uk

Winkworth

for every step...

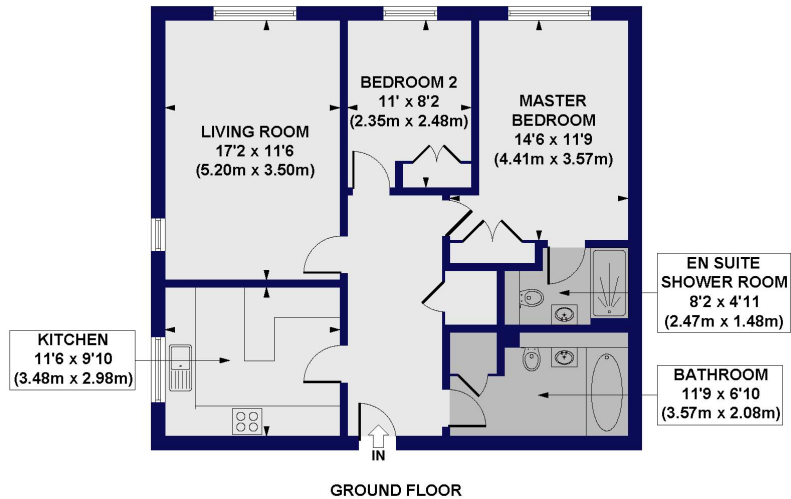




MATERIAL INFO

Tenure: Leasehold
Term: 970 year and 7 months
Service Charge: £3495.6 per annum
Ground Rent: £0 Annually
Council Tax Band: F
EPC rating: C

Brookfield Court, Woodside Grange Road, N12
Approx. Gross Internal Floor Area 831 sq. ft / 77.22 sq. m



All measurements of walls, doors, windows, fittings and appliances, including their size and location, are shown as standard sizes and do not constitute any warranty or representation by the seller, their agent or CP Creative. Any intending purchaser must satisfy himself by inspection or otherwise as to the correctness of the information contained in these plans. This plan is for illustrative purposes only and should be used as such by any prospective purchasers.

Winkworth

Score	Energy rating	Current	Potential
92+	A		
81-91	B		
69-80	C	69 C	75 C
55-68	D		
39-54	E		
21-38	F		
1-20	G		

For more information, scan the QR code or visit the link below



<https://www.winkworth.co.uk/sale/property/FIN250276>

Where no figures are shown, we have been unable to ascertain the information. All figures that are shown were correct at the time of printing.

Finchley
020 8349 3388 | finchley@winkworth.co.uk

Winkworth

for every step...

Winkworth wishes to inform prospective buyers and tenants that these particulars are a guide and act as information only. All our details are given in good faith and believed to be correct at the time of printing but they don't form part of an offer or contract. No Winkworth employee has authority to make or give any representation or warranty in relation to this property. All fixtures and fittings, whether fitted or not are deemed removable by the vendor unless stated otherwise and room sizes are measured between internal wall surfaces, including furnishings.