



OAKFIELD ROAD, SE20  
**£1,500 PER MONTH FURNISHED**

## CONTEMPORARY ONE BED TO RENT IN PENGES.

Crystal Palace | 02038693222 | [crystalpalace@winkworth.co.uk](mailto:crystalpalace@winkworth.co.uk)

**Winkworth**

for every step...

[winkworth.co.uk](http://winkworth.co.uk)





## DESCRIPTION:

Winkworth is pleased to offer this well presented one bedroom flat to rent in Penge.

The property is located on the raised ground floor of this period conversion and comprises spacious open plan kitchen and reception room with shaker style fitted kitchen, good sized double bedroom and modern shower room. The property has been to a contemporary standard throughout and benefits from period of features and high ceilings.

Offer furnished (except for bed & mattress) and available mid-June.

The property is ideally located for both Penge West & Penge East Stations and is a short walk from the local high street.

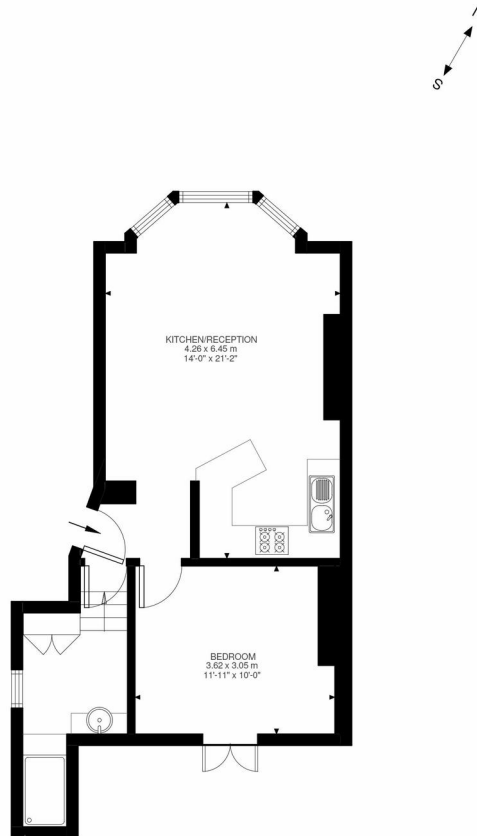
## AT A GLANCE

- One Bedroom Flat
- Raised Ground Floor
- Open Plan Kitchen & Reception
- Modern Shower Room
- Furnished except for bed & mattress
- Short walk to Penge West & Penge East Stations
- Holding Deposit: £346.15 (1









Raised Ground Floor  
485 ft²

Oakfield Road, SE20  
Approximate Gross Internal Area  
45.04 SQ.M / 485 SQ.FT

Illustration for identification purposes only. Not to scale.  
Floor Plan Drawn According To RICS Guidelines.

This floorplan is for illustration purposes only and is not to scale. The position and size of doors, windows, appliances and other features are approximate.

Energy Efficiency Rating	
Current	Potential
Very energy efficient - lower running costs	
(92-)	A
(81-91)	B
(69-80)	C
(55-68)	D
(39-54)	E
(21-38)	F
(1-20)	G
Not energy efficient - higher running costs	
England, Scotland & Wales	
EU Directive 2002/91/EC	

**Deposit: £0.00**

**Holding Deposit:**

**Council Tax Band: B**

Where no figures are shown, we have been unable to ascertain the information. All figures that are shown were correct at the time of printing.

**Winkworth**

**for every step...**

**Crystal Palace | 02038693222 | crystalpalace@winkworth.co.uk**

**winkworth.co.uk**

Winkworth wishes to inform prospective buyers and tenants that these particulars are a guide and act as information only. All our details are given in good faith and believed to be correct at the time of printing but they don't form part of an offer or contract. No Winkworth employee has authority to make or give any representation or warranty in relation to this property. All fixtures and fittings, whether fitted or not are deemed removable by the vendor unless stated otherwise and room sizes are measured between internal wall surfaces, including furnishings.