



- **DOWNSTAIRS BEDROOM & ENSUITE**
- **PARKING FOR 2 CARS**
- **EXTENDED TO THE REAR**
- **SPACIOUS BEDROOMS**
- **CLOSE TO KRISHNA AVANTI SCHOOL**
- **WALKING DISTANCE TO QUEENSBURY STATION**

COTMAN GARDENS, MIDDLESEX, HA8
£575,000 FREEHOLD

FOUR BEDROOMS END OF TERRACE HOUSE

Kingsbury | 020 8204 0000 | kingsbury@winkworth.co.uk

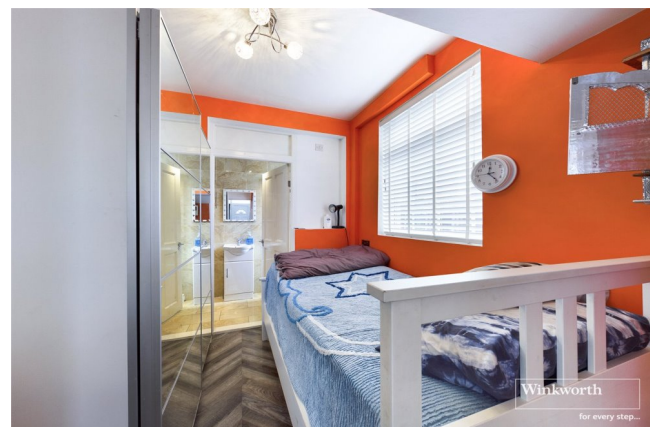
Winkworth

for every step...

winkworth.co.uk



DESCRIPTION: This well-kept 4 bedroom 2 bathroom semi-detached house is a blank canvas for a growing family. Offering off street parking for 2 cars, a large through lounge and wooden floors leading to a kitchen overlooking the well maintained garden. Within the rear extension is, a bedroom and an ensuite shower room providing convenience for an extended family. Spread over 2 floors, the property is beautifully presented and offers an adaptable living space for the most demanding of families. The first floor comprises of 2 spacious double bedrooms with built in wardrobes and a single bedroom. There is also a family bathroom. This beautifully located property can offer the prospect of an ideal home for a growing family. Situated in the catchment of Krishna Avanti Secondary School & Canons High School along with Stag Lane Junior School. Transport is extremely convenient with a 12 minute walk to Queensbury Tube Station and Edgware Station on the Jubilee and Northern Line respectively.



Winkworth

for every step...



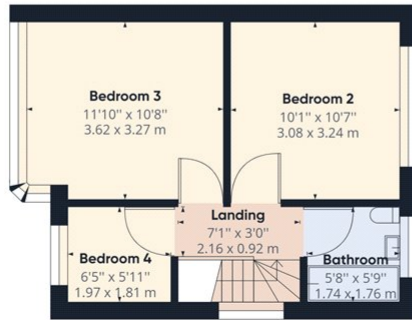
Winkworth

for every step...



Ground Floor Building 1

Approximate total area⁽¹⁾
 925.80 ft²
 86.01 m²



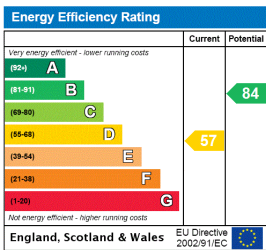
Floor 2 Building 1

(1) Excluding balconies and terraces

While every attempt has been made to ensure accuracy, all measurements are approximate, not to scale. This floor plan is for illustrative purposes only.

GIRAFFE360

This floorplan is for illustration purposes only and is not to scale. The position and size of doors, windows, appliances and other features are approximate.



Kingsbury | 020 8204 0000 | kingsbury@winkworth.co.uk



for every step...

winkworth.co.uk

Winkworth wishes to inform prospective buyers and tenants that these particulars are a guide and act as information only. All our details are given in good faith and believed to be correct at the time of printing but they don't form part of an offer or contract. No Winkworth employee has authority to make or give any representation or warranty in relation to this property. All fixtures and fittings, whether fitted or not are deemed removable by the vendor unless stated otherwise and room sizes are measured between internal wall surfaces, including furnishings.