



BLOMFIELD VILLAS, LONDON, W2 £1,500,000 LEASEHOLD

Winkworth are excited to offer this duplex apartment situated on the ground and garden floors of an attractive converted stucco-fronted period house. The property has been well looked after by its current owners and boasts well-proportioned rooms, a wonderful kitchen-family room, a private entrance on the raised ground floor and a generously sized private garden. The primary bedroom benefits from a four-piece en-suite bathroom with a roll-top bath, a further second bedroom on the raised ground floor, and an en-suite bedroom on the lower ground floor. Additionally, a home office / outhouse with an en-suite shower room has been built at the rear of the 41ft garden. Blomfield Villas is located close to all local amenities, including the boutique shops and cafes on Clifton Road (approx. 0.6 miles), the famous Regent's Canal, and the Underground at Warwick Avenue (Bakerloo Line, 0.3 miles) as well as Paddington (Elizabeth Line, 0.3 miles).

Primary Bedroom With Ensuite Bathroom | Double Bedroom With En-Suite Shower Room | Third Bedroom | Outhouse With Ensuite-Shower Room | Open Plan Kitchen/Breakfast Room To Dining Room | Reception Room | Guest W.C | Patio | Vault | Office | Leasehold

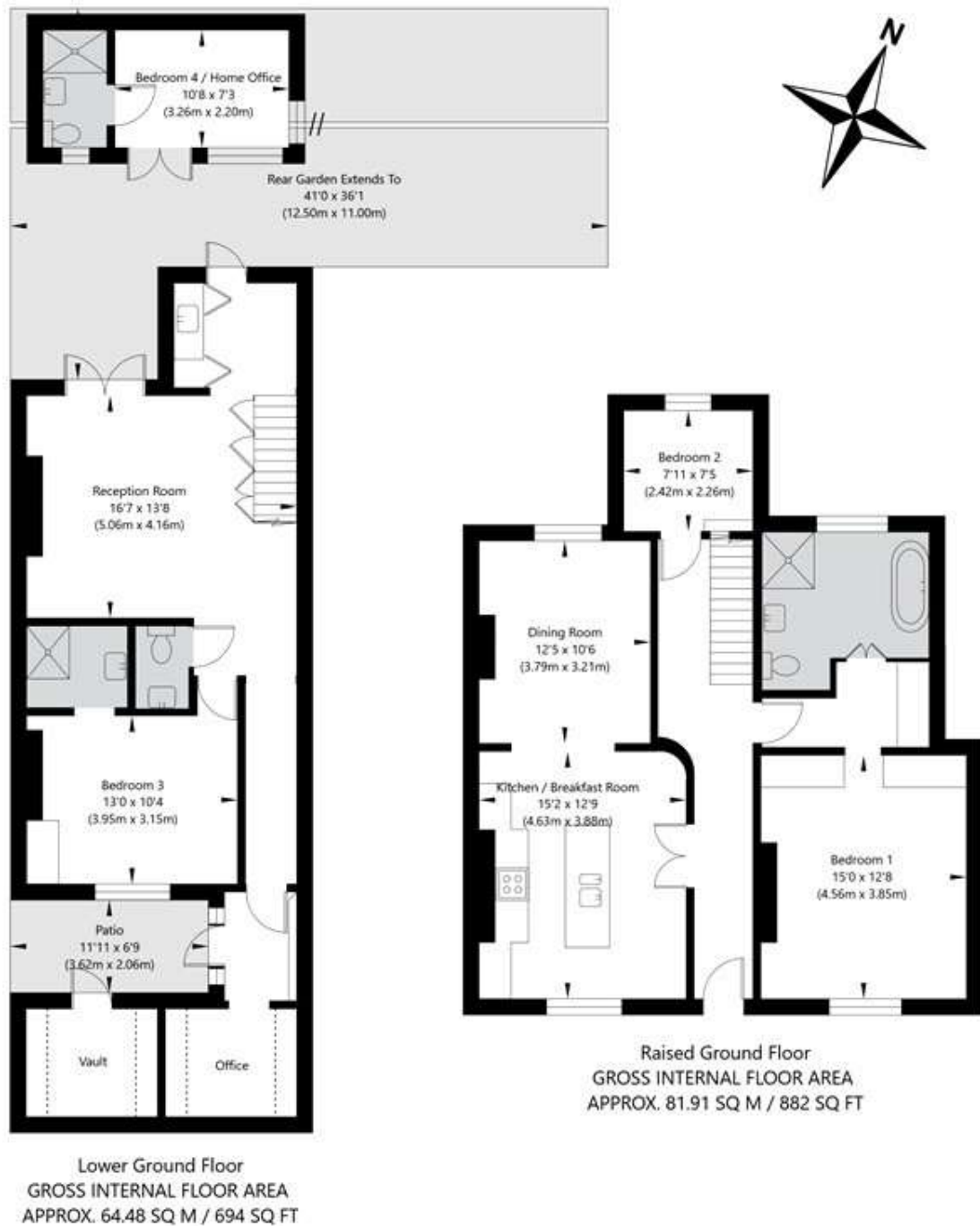
Winkworth

for every step...

winkworth.co.uk/maida-vale

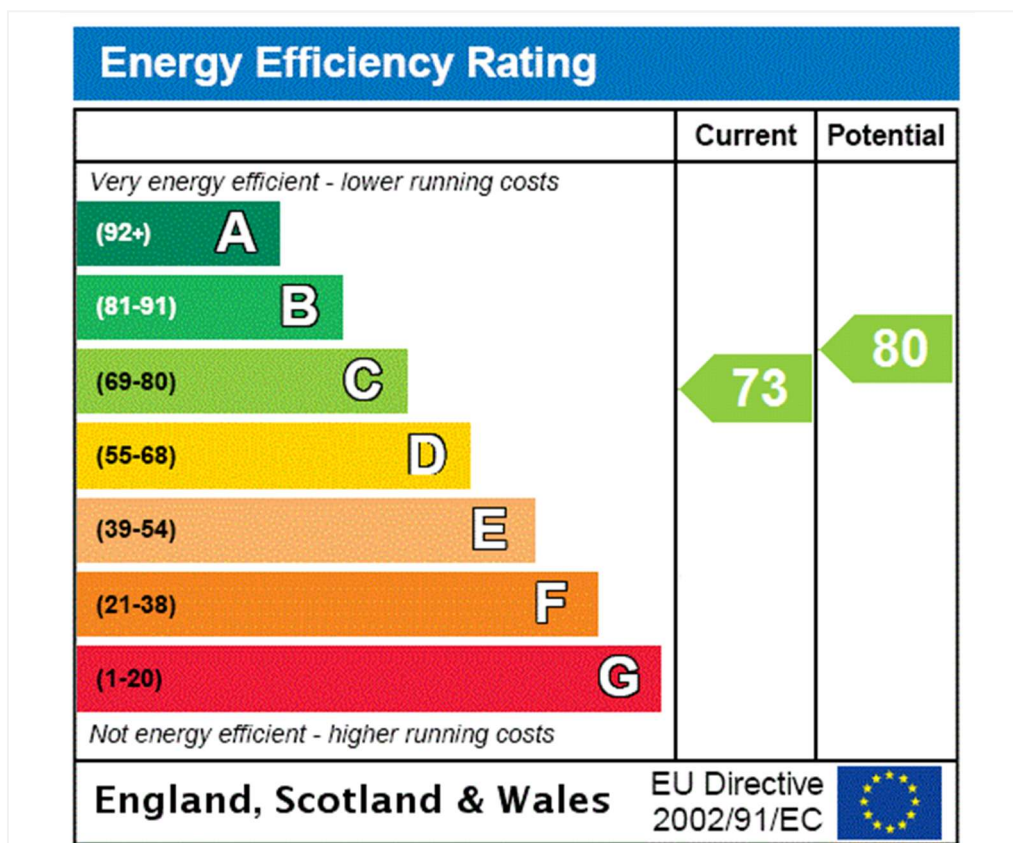


Blomfield Villas, London W2 6NH



APPROXIMATE GROSS INTERNAL FLOOR AREA 156.53 SQ M / 1685 SQ FT

THIS FLOOR PLAN IS FOR ILLUSTRATIVE PURPOSES ONLY AND
 SHOULD BE USED FOR THIS PURPOSE BY PROSPECTIVE APPLICANTS AS ITS NOT TO SCALE.



Tenure: Leasehold

Term: Expires - 12/11/2114

Service Charge: £2,962 per annum

Ground Rent: £0 Annually (subject to increase)

Council Tax Band: E

Where no figures are shown, we have been unable to ascertain the information. All figures that are shown were correct at the time of printing.

Where no figures are shown, we have been unable to ascertain the information. All figures that are shown were correct at the time of printing. These particulars are not an offer or contract, nor part of one. You should not rely on statements by Winkworth in the particulars or by word of mouth or in writing "information" as being factually accurate about the property, its condition or its value. Winkworth does not have any authority to make any representations about the property, and accordingly any information given is entirely without responsibility on the part of the agents, seller(s) or lessor(s). These particulars are prepared on the basis of the information supplied by our client and are a rough guide for information only. The photographs show only certain parts of the property. We are not able to check all of the information and therefore are unable to guarantee accuracy. All interested parties are therefore advised to undertake all necessary inspections and checks that they deem appropriate. Where displayed, the square footage is taken from the floor plans, which are created by an independent supplier. These measurements are approximate and included for illustrative purposes only. The measurements may vary. Winkworth does not make any representation as to the accuracy of these measurements and you should seek to verify them for yourself. Winkworth accept no liability for any loss you may suffer if you rely on these measurements. All fixtures and fittings, whether fitted or not are deemed removable by the vendor unless stated. Any reference to alterations to, or use of, any part of the property does not mean that any necessary planning, building regulations or other consent has been obtained. Amenities and appliances have not been tested

Maida Vale | 211-213 Sutherland Avenue, London, W9 1RU | 020 7289 1692 | maidavale@winkworth.co.uk

Winkworth

for every step...

winkworth.co.uk/maida-vale

Winkworth wishes to inform prospective buyers and tenants that these particulars are a guide and act as information only. All our details are given in good faith and believed to be correct at the time of printing but they don't form part of an offer or contract. No Winkworth employee has authority to make or give any representation or warranty in relation to this property. All fixtures and fittings, whether fitted or not are deemed removable by the vendor unless stated otherwise and room sizes are measured between internal wall surfaces, including furnishings.