



**HILLSIDE, KINGSBURY, LONDON, NW9**  
**OFFERS IN EXCESS OF £750,000 FREEHOLD**

# BEAUTIFUL CHAIN FREE TURN KEY FIVE BEDROOM HOME

- COUNCIL TAX BAND E - BRENT

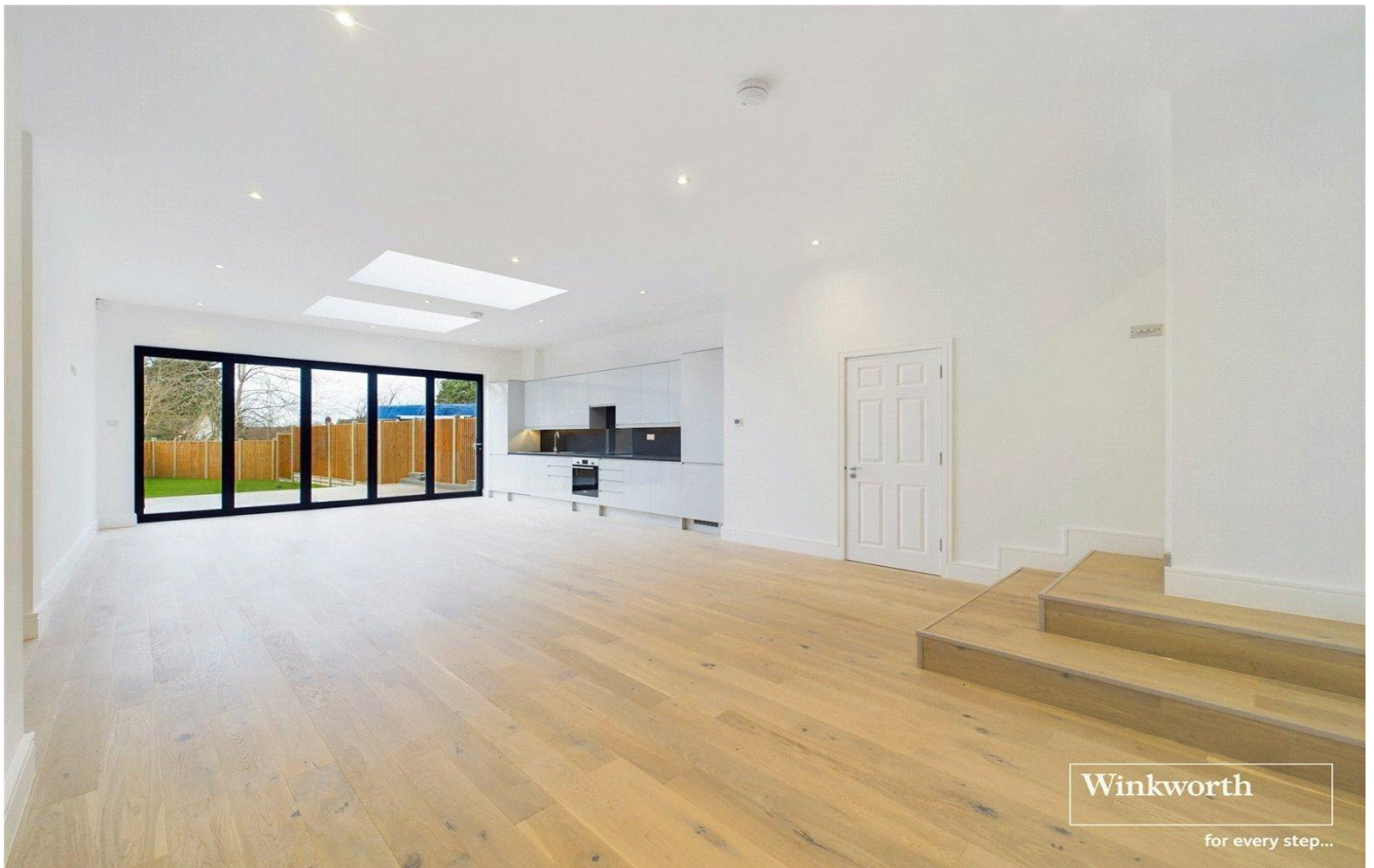
**Kingsbury** | 020 8204 0000 | [kingsbury@winkworth.co.uk](mailto:kingsbury@winkworth.co.uk)

**Winkworth**

*winkworth.co.uk*

See things differently





This stunning, chain-free, turn-key family home is ready to move straight into and offers generous, modern living throughout. Finished in a neutral décor throughout, the property is bright, stylish and thoughtfully laid out to suit contemporary family life. The ground floor provides an abundance of living space, including a separate lounge and an impressive open-plan kitchen/living/ area with a shower room. Bi-folding doors open directly onto the rear garden, creating a seamless indoor-outdoor space ideal for entertaining and everyday living. Upstairs over the upper two levels, the property boasts five well-proportioned bedrooms, offering excellent flexibility for a growing family, home working or guest accommodation. Externally, the attractive rear garden provides a peaceful setting for relaxation, while off-street parking adds everyday convenience.

Situated in a sought-after location close to local amenities, well-regarded schools and excellent transport links, this exceptional home truly must be seen to be appreciated.



**Winkworth**





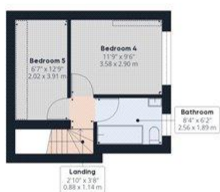
Winkworth



Ground Floor



Floor 2



Floor 3

Approximate total area<sup>(1)</sup>

1516.74 ft<sup>2</sup>

140.91 m<sup>2</sup>

Reduced headroom

23.43 ft<sup>2</sup>

2.18 m<sup>2</sup>

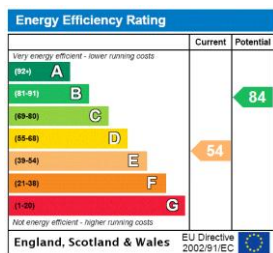
(1) Excluding balconies and terraces

Reduced headroom  
(below 1.5m/4.92ft)

While every attempt has been made to ensure accuracy, all measurements are approximate, not to scale. This floor plan is for illustrative purposes only.

GIRAFFE360

This floorplan is for illustration purposes only and is not to scale. The position and size of doors, windows, appliances and other features are approximate.



Kingsbury | 020 8204 0000 | kingsbury@winkworth.co.uk