



EAST VIEW PLACE, READING, BERKSHIRE, RG1  
£1,450 PER MONTH FURNISHED,

## TWO DOUBLE BEDROOM FURNISHED APARTMENT IN READING TOWN CENTRE WITH ALLOCATED PARKING SPACE.

Reading | 0118 4022 300 | [reading@winkworth.co.uk](mailto:reading@winkworth.co.uk)

**Winkworth**

for every step...

[winkworth.co.uk](http://winkworth.co.uk)





Winkworth

for every step...

## DESCRIPTION:

Located within a favoured position off South Street, a well presented two bedroom first floor apartment offering good sized accommodation. The property is situated within easy walking distance to the mainline station with its direct link to London Paddington in just over 20 minutes and soon to be on the Elizabeth Line (Crossrail) linking Reading with the City of London and Canary Wharf. The Oracle shopping complex and the heart of the town centre is within a few minutes walk. The well-appointed accommodation comprises entrance hall, open plan living room/kitchen, two double bedrooms, en suite shower to the master bedroom and a further three piece bathroom. Additional benefits include secure allocated parking space and communal gardens. Available now. Furnished.

## AT A GLANCE

- Two double bedroom apartment
- Located on the first floor
- Close to Reading town centre
- Two bathrooms
- Communal gardens
- Secure allocated parking space
- Council tax band C
- Available now
- Furnished



Winkworth

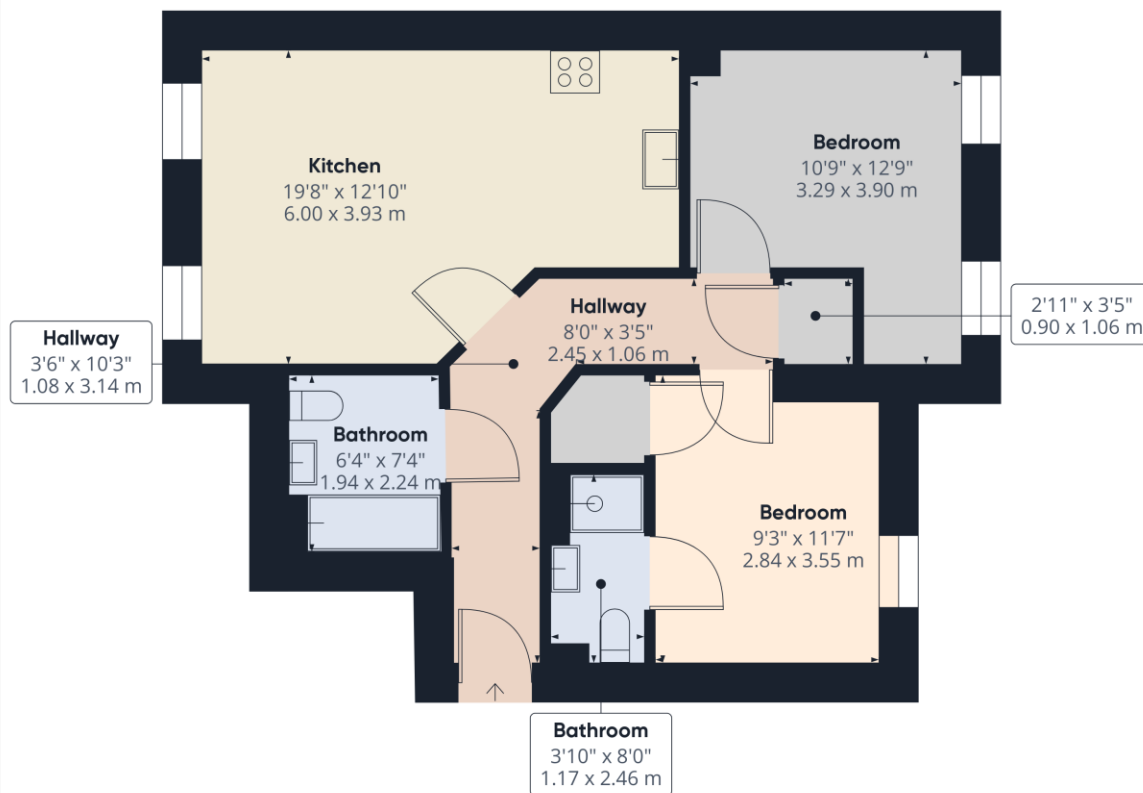
for every step...



Winkworth

for every step...





Approximate total area<sup>1)</sup>

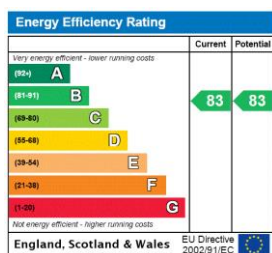
626.48 ft<sup>2</sup>  
58.2 m<sup>2</sup>

Excluding balconies and terraces

While every attempt has been made to ensure accuracy, all measurements are approximate, not to scale. This floor plan is for illustrative purposes only.

GIRAFFE360

This floorplan is for illustration purposes only and is not to scale. The position and size of doors, windows, appliances and other features are approximate.



Reading | 0118 4022 300 | [reading@winkworth.co.uk](mailto:reading@winkworth.co.uk)

**Winkworth**

for every step...

[winkworth.co.uk](http://winkworth.co.uk)

Winkworth wishes to inform prospective buyers and tenants that these particulars are a guide and act as information only. All our details are given in good faith and believed to be correct at the time of printing but they don't form part of an offer or contract. No Winkworth employee has authority to make or give any representation or warranty in relation to this property. All fixtures and fittings, whether fitted or not are deemed removable by the vendor unless stated otherwise and room sizes are measured between internal wall surfaces, including furnishings.