



**CRONDACE ROAD, FULHAM, LONDON, SW6**  
**£625 PER WEEK**

A charming two bedroom garden flat on this popular street, just moments from Eel Brook Common in Parsons Green.

Fulham & Parsons Green | 020 7731 3388 | [fulham@winkworth.co.uk](mailto:fulham@winkworth.co.uk)

**Winkworth**

for every step...

[winkworth.co.uk](http://winkworth.co.uk)



## DESCRIPTION:

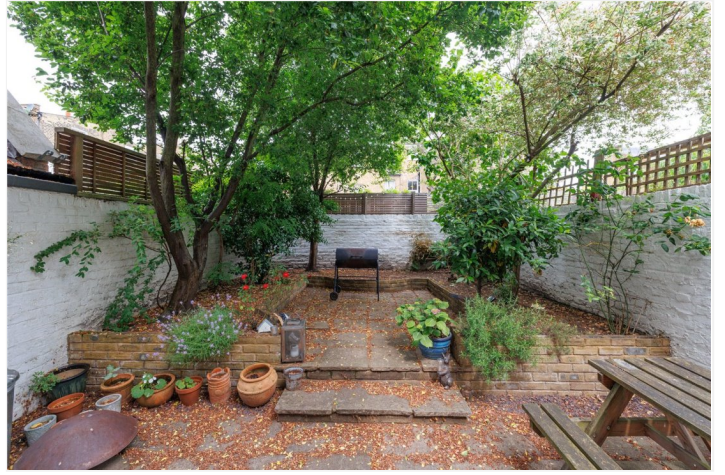
The property benefits from a spacious open-plan kitchen/reception room, leading onto a large, private garden.

There are two generous sized double bedrooms which are served by a modern bathroom. There is excellent storage throughout, including a large cellar.

The property will be re-painted throughout before the start of a new tenancy.

Conveniently located, Crondace Road is perfectly positioned to enjoy the village atmosphere of Parsons Green and Eel Brook Common, as well as being a stone's throw away from the bustling hub of Fulham Broadway.

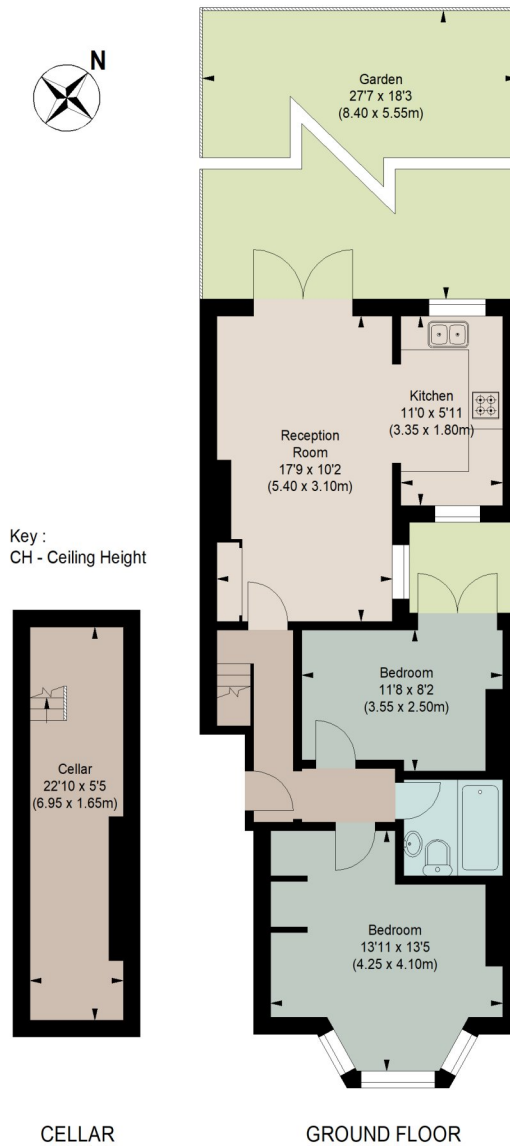




# CRONDACE ROAD, SW6

Approximate gross internal area

731 sq ft / 67.91 sq m



The floor plan is not to scale and measurements and areas shown are approximate and therefore should be used for illustrative purposes only. The plan has been prepared in accordance with the RICS code of Measuring Practice and whilst we have confidence in the information produced, it must not be relied on. If there is any aspect of particular importance, you should carry out or commission your own inspection of the property.

This floorplan is for illustration purposes only and is not to scale. The position and size of doors, windows, appliances and other features are approximate.

Fulham & Parsons Green | 020 7731 3388 | fulham@winkworth.co.uk



for every step...

winkworth.co.uk

Winkworth wishes to inform prospective buyers and tenants that these particulars are a guide and act as information only. All our details are given in good faith and believed to be correct at the time of printing but they don't form part of an offer or contract. No Winkworth employee has authority to make or give any representation or warranty in relation to this property. All fixtures and fittings, whether fitted or not are deemed removable by the vendor unless stated otherwise and room sizes are measured between internal wall surfaces, including furnishings.