



LANDCROFT ROAD, EAST DULWICH, LONDON, SE22  
OIEO £1,100,000 FREEHOLD

**THIS BEAUTIFULLY PRESENTED FIVE BEDROOM  
VICTORIAN TERRACE HOUSE IS SITUATED IN A  
PRIME CENTRAL EAST DULWICH LOCATION.**

Dulwich | 020 8299 2722 | [dulwich@winkworth.co.uk](mailto:dulwich@winkworth.co.uk)

Tenure Freehold | Council Tax Band D – London Borough of Southwark

**Winkworth**

[winkworth.co.uk](http://winkworth.co.uk)

See things differently



## DESCRIPTION:

This beautifully presented five bedroom Victorian terrace house is situated in a prime central East Dulwich location, close to several local primary schools and the bars and restaurants on Lordship Lane. The property on the ground floor comprises a spacious double reception, boasting herringbone flooring, high ceilings and a large fully extended kitchen diner to rear. The kitchen is fully fitted with built in appliances and free standing range cooker. Bi-fold doors lead out to a sunny private garden, ideal for morning coffees, a kick about with the kids or al-fresco dining. The ground floor also benefits from a WC.

The first floor comprises three double bedrooms, and a spacious family bathroom. The loft has been converted to provide a further two double bedrooms and shower room. It is perfectly situated to benefit from everything the area has to offer including plenty of bars, restaurants, shops and local schools. Transport links are provided via East Dulwich with connections to London Bridge, a short bus to Denmark Hill for the overground or a bus to Forest Hill for the East London overground line. This is a wonderful property in a superb location.

## AT A GLANCE

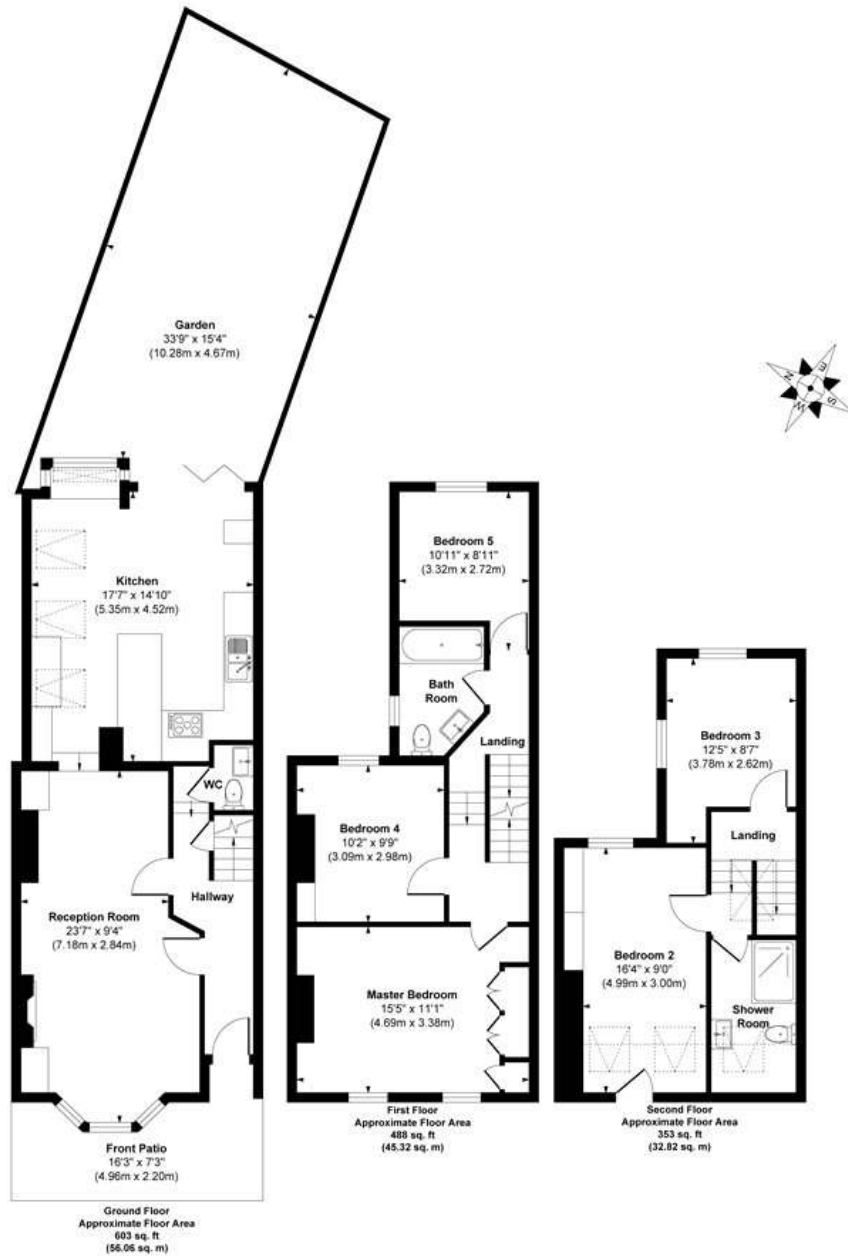
- Five Double Bedrooms
- Victorian Terrace House
- Large Double Reception
- Modern Kitchen-Diner With Built-In Appliances
- Two Bathrooms & A Downstairs Cloakroom
- Front & Rear Garden
- Fantastic Location
- Chain Free







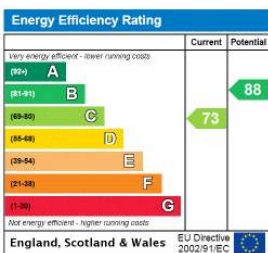
## Landcroft Road



**Approx. Gross Internal Floor Area 1444 sq. ft / 134.20 sq. m**

Illustration for identification purposes only, measurements are approximate, not to scale.  
Produced by Elements Property

This floorplan is for illustration purposes only and is not to scale. The position and size of doors, windows, appliances and other features are approximate.



Dulwich | 020 8299 2722 | [dulwich@winkworth.co.uk](mailto:dulwich@winkworth.co.uk)

**Winkworth**

[winkworth.co.uk](http://winkworth.co.uk)

See things differently

Winkworth wishes to inform prospective buyers and tenants that these particulars are a guide and act as information only. All our details are given in good faith and believed to be correct at the time of printing but they don't form part of an offer or contract. No Winkworth employee has authority to make or give any representation or warranty in relation to this property. All fixtures and fittings, whether fitted or not are deemed removable by the vendor unless stated otherwise and room sizes are measured between internal wall surfaces, including furnishings.