



BLOOMSBURY CLOSE, LONDON, W5
OEIO £285,000 LEASEHOLD

COUNCIL TAX BAND: C
EPC: E

Ealing & Acton | 0208 896 0123 | ealing@winkworth.co.uk

Winkworth

for every step...

winkworth.co.uk



DESCRIPTION:

Well-proportioned one bedroom apartment located on the second floor of a purpose built block within a gated development. The property offers a lot of potential as it requires modernising throughout and could be a great project for someone who would like to put their own stamp. It further benefits from a private balcony, off street parking and is offered to the market chain-free. Ealing Common and West Acton underground stations are close by, as well as numerous local amenities.



Winkworth

for every step...

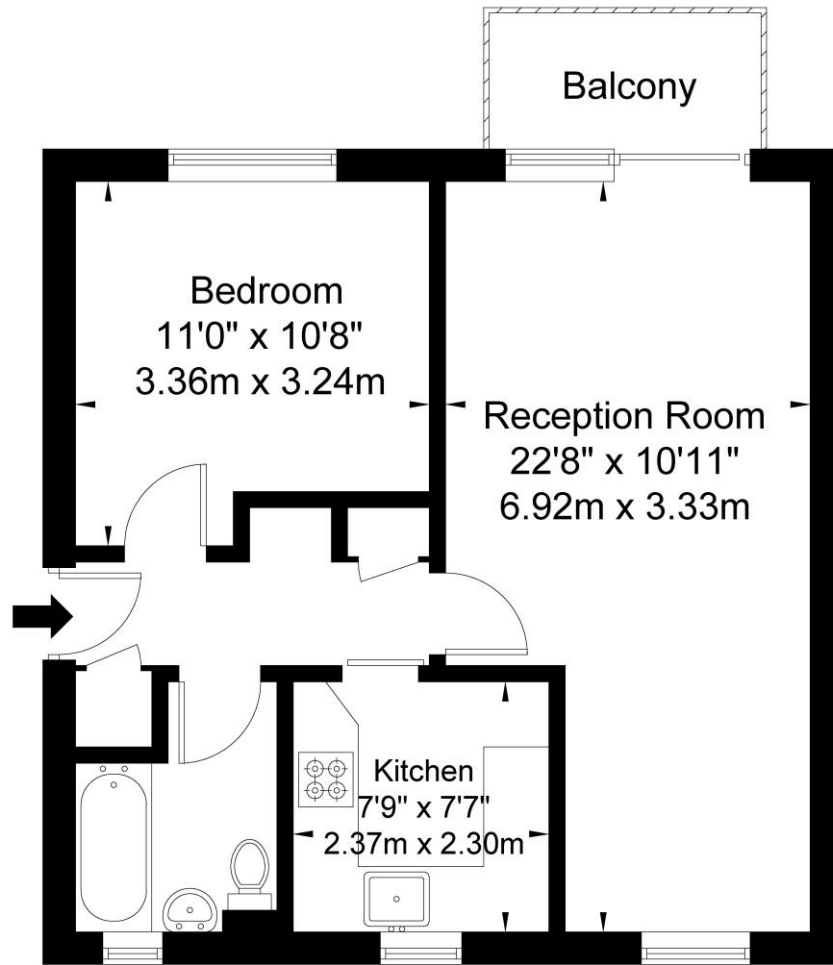
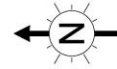


Winkworth

for every step...

Bloomsbury Close W5 3SF

Approx Gross Internal Area = 46.6 sq m / 501 sq ft



Second Floor

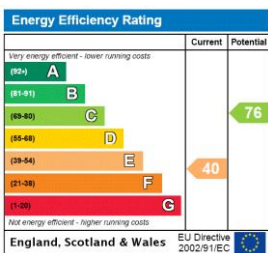
Ref

Copyright **BLEU
PLAN**

The Floor plan is not to scale and measurements and areas shown are approximate and therefore should be used for illustrative purposes only. The plan has been prepared in accordance with the RICS code of Measuring Practice and whilst we have confidence in the information produced it must not be relied on. If there is any aspect of particular importance, you should carry out or commission your own inspection of the property.

Copyright @ BLEUPLAN

This floorplan is for illustration purposes only and is not to scale. The position and size of doors, windows, appliances and other features are approximate.



Ealing & Acton | 0208 896 0123 | ealing@winkworth.co.uk



for every step...

winkworth.co.uk

Winkworth wishes to inform prospective buyers and tenants that these particulars are a guide and act as information only. All our details are given in good faith and believed to be correct at the time of printing but they don't form part of an offer or contract. No Winkworth employee has authority to make or give any representation or warranty in relation to this property. All fixtures and fittings, whether fitted or not are deemed removable by the vendor unless stated otherwise and room sizes are measured between internal wall surfaces, including furnishings.