

RADLEY ROAD, LONDON, N17

£465,000 SHARE OF FREEHOLD – NOW OFF THE MARKET

A TWO BEDROOM FIRST FLOOR FLAT.



AT A GLANCE

- Two Bedrooms
- First Floor Apartment
- Meticulous Interior Design
- Potential To Convert The Loft (STPP)
- Share Of Freehold
- Amazing Location
- Original Period Features
- Underfloor Heating In The Bathroom

DESCRIPTION

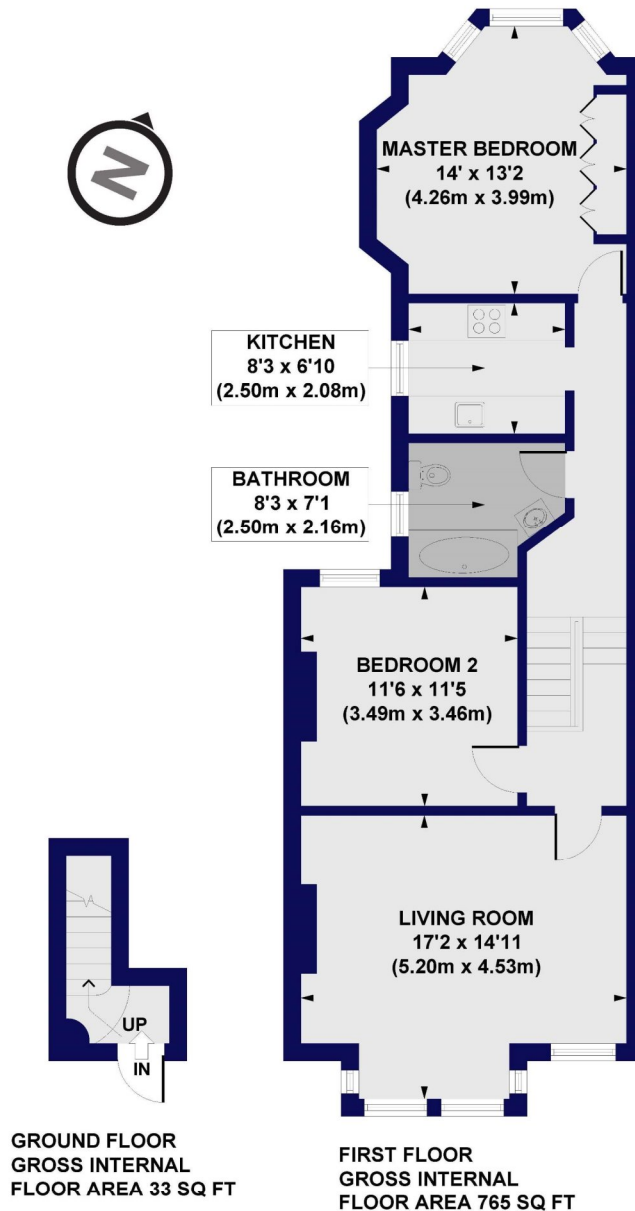
Set across the first floor of this handsome Victorian conversion, this beautifully curated apartment spans 798 square feet of thoughtfully designed living space. It offers an elegant and inviting home in the heart of Bruce Grove, one of Tottenham's most quietly rising neighbourhoods.



ACCOMMODATION



Radley Road, N17
Approx. Gross Internal Floor Area 798 sq. ft / 74.10 sq. m



All measurements of walls, doors, windows, fittings and appliances, including their size and location, are shown as standard sizes and do not constitute any warranty or representation by the seller, their agent or CP Creative. Any intending purchaser must satisfy himself by inspection or otherwise as to the correctness of the information contained in these plans. This plan is for illustrative purposes only and should be used as such by any prospective purchasers.

Winkworth

This floorplan is for illustration purposes only and is not to scale. The position and size of doors, windows, appliances and other features are approximate.