

EAGLE POINT, CITY ROAD, LONDON, EC1V  
**£525,000 LEASEHOLD**

**A LUXURY 553 SQ. FT. ONE BED FLAT SET ON  
THE THIRD FLOOR OF THIS EXQUISITE  
DEVELOPMENT**

Islington | 0207 354 2480 | [islington@winkworth.co.uk](mailto:islington@winkworth.co.uk)

**Winkworth**

[winkworth.co.uk](http://winkworth.co.uk)

See things differently





## DESCRIPTION:

A one bedroom third floor luxury apartment set in the impressive Eagle Point development designed by Terry Farrell & Partners.

The property is set just moments away from London's famous Old Street EC1. With a mixture modern glamour and Art Deco elegance, this superb apartment boasts a sleek and hi-tech kitchen with Siemens appliances, spacious open plan living room and luxury bathroom units with large format porcelain tiles.

Residents benefit from excellent onsite facilities including 24-hour concierge, on-site cinema, spa/ gym and the excellent local amenities and transport links this very appealing and sought after location.

City Road is centrally located close to a range of amenities that can be found in Shoreditch, Brick Lane and the popular Spitalfields. Old Street Station is nearby and is considered an urban hotspot with excellent transport links around the City.

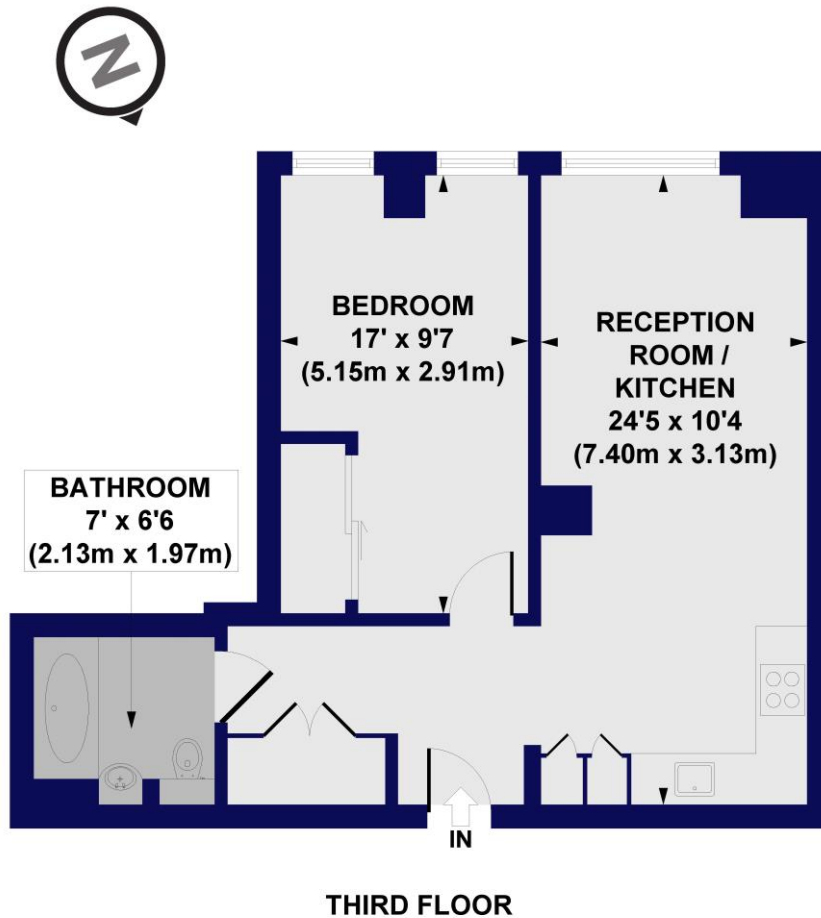
**Winkworth**



Winkworth



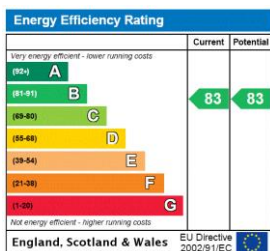
**Eagle Point, City Road, EC1V**  
**Approx. Gross Internal Floor Area 556 sq. ft / 51.61 sq. m**



All measurements of walls, doors, windows, fittings and appliances, including their size and location, are shown as standard sizes and do not constitute any warranty or representation by the seller, their agent or CP Creative. Any intending purchaser must satisfy himself by inspection or otherwise as to the correctness of the information contained in these plans. This plan is for illustrative purposes only and should be used as such by any prospective purchasers.

**Winkworth**

This floorplan is for illustration purposes only and is not to scale. The position and size of doors, windows, appliances and other features are approximate.



Islington | 0207 354 2480 | [islington@winkworth.co.uk](mailto:islington@winkworth.co.uk)

**Winkworth**

[winkworth.co.uk](http://winkworth.co.uk)

See things differently

Winkworth wishes to inform prospective buyers and tenants that these particulars are a guide and act as information only. All our details are given in good faith and believed to be correct at the time of printing but they don't form part of an offer or contract. No Winkworth employee has authority to make or give any representation or warranty in relation to this property. All fixtures and fittings, whether fitted or not are deemed removable by the vendor unless stated otherwise and room sizes are measured between internal wall surfaces, including furnishings.